

# STEVENSON GENETICS

## Elite Female Sale



✦ **Monday, November 30, 2009** ✦

**Starting at 3:00 pm (MST)**

***Selling Tuesday, November 24, 2009***

2000 Commercial Females

390 Two Year Old Bulls  
including 100 PAP Tested Bulls

340 Yearling Bulls

# WELCOME TO STEVENSON GENETICS



*Bob, Darrell, Clint, Keith and Jake*

## **Stevenson Family Members**

Bob Stevenson, Stevenson Angus Ranch (406) 350-5453 cell  
Darrell Stevenson, Stevenson Angus Ranch (406) 350-5443 cell  
Clint Stevenson, Stevenson's Diamond Dot (406) 374-2250, (406) 366-9023 cell  
Keith Stevenson, Stevenson Angus Ranch (406) 423-5450  
Jake Stevenson, Stevenson Angus (406) 570-4799 cell



*Ryan Hughes*

## **Additional Stevenson Genetics Representatives**

Ryan Hughes, Marketing & Customer Service, cell (406) 581-1873  
Lance Hughes, DVM, Resident Veterinarian (406) 423-5527  
Phillip Borden, AZ, NM and TX Representative (575) 760-6987 cell



*Lance Hughes, DVM*

## **Authorized Marketing Agents**

Conover Auction Service: Al Conover (641) 227-3537  
Gary Wall (641) 227-3731



Angus Hall of Fame  
Tom Burke (816) 853-2697  
Kurt Schaff (816) 520-6447  
Jeremy Haag (816) 516-1309

Parker Friedrich  
(254) 413-2420

**Sale Day Phone Number**  
(406) 423-7500

**STEVENSON GENETICS**  
PO Box 272 • HOBSON, MT 59452  
406/ 423-7500  
OR  
406/ 423-5750  
www.STEVENSONGENETICS.com

*Your Angus Source*

**From all of us at Stevenson Genetics, we invite you to attend our 49<sup>th</sup> Annual Production Sale**  
Registered Bred Heifers and Cows — Monday, November 30, 3:00 p.m. (mst)  
Commercial Bred Females — Tuesday, November 24, 8:00 a.m. (mst)  
Two Year Old and Yearling Bulls — Tuesday, November 24, immediately following Commercial Bred Females





**Sale Day Phone Number**

(406) 423-7500

**49<sup>th</sup> Annual Production Sale**

160 Registered Angus Females sell on  
**Monday, November 30, 3:00 p.m. (mst)**

2000 Commercial Females & 750 Bulls sell on  
**Tuesday, November 24, 8:00 a.m. (mst)**  
 Please see our separate Bull Sale Book.

**Sale Location**

The Original Stevenson Sale barn is 1.5 miles south of Hobson.  
 See map back cover.

**Auctioneers**

Joe Goggins and Roger Jacobs

**Sale Staff**

Jerry Gliko..... Western Livestock Journal  
 John Goggins..... Western Ag Reporter  
 Don Ravellette ..... Cattle Business Weekly  
 Andy Rest ..... Angus Journal  
 Jeff Thomas..... Prairie Star and Montana Angus News

**Northern Livestock Video Auction**

View online catalog and video at  
[www.NorthernLivestockVideo.com](http://www.NorthernLivestockVideo.com)

**Preview DVDs are available upon request.**

If you do not have internet or have marginal service, please request a preview DVD ASAP. Sale will be broadcast on the internet only. Registration to bid needs to be done prior to the sale. Call 1-866-616-5035 or pre-register at [www.NorthernLivestockVideo.com](http://www.NorthernLivestockVideo.com). Sale can be viewed on the internet with the option to use Northern Livestock's Sale Day Bid Line: 1-406-245-0889. To bid via the phone you must have a pre-registered buyer number. For more information, call Northern Livestock Video Auction at 1-866-616-5035 and ask for Jackie.



**Sale Order**

Cattle will sell in consecutive catalog order.

**Sight Unseen Purchase Guarantee**

Sale Day Phone - (406) 423-7500. Buyers unable to attend the sale may call or send their bids to any of the Representatives listed or directly to Stevenson Genetics. We provide a complete satisfaction guarantee for cattle purchased in this manner. When cattle purchased "sight unseen" are delivered, the buyer can inspect the cattle. If they are not as represented, simply put them back on our truck.

**Transportation**

Billings and Great Falls are both served by several major airlines. Lewistown now services a direct flight from Denver with Great Lakes Air. Private planes may land at the Lewistown Airport. Please contact Stevenson Genetics in advance for transportation from the Lewistown Airport.

**Accommodations**

The following motels are located in nearby Lewistown. For reservations, contact either the Stevensons or the motel of your choice. Remember to ask reservation departments for Stevenson Genetics Sale rates.

Yogo Inn .....	1-800-860-9646
Super 8 Motel .....	406-538-2581
B&B Motel .....	406-538-5496
Mountain View Motel .....	1-800-862-5786
Meadow Brook B&B (Hobson) .....	406-423-5537
Gumbo Flats B&B (Hobson) .....	406-423-5565
Hughes Mountain Ranch (Stanford) .....	406-566-2640

**Announcements**

Announcements from the auction block take precedence over any printed material.

**Herd Health**

All cattle will sell with proper health papers for interstate shipment.

**Payment**

Payment is due in full sale day unless prior arrangements have been made. Interest will be incurred on over due accounts. Even if an invoice is to be sent, please check in at the office.

**Delivery**

For all cattle purchased over the phone or through Northern, Stevenson Genetics will be in contact following the sale to arrange delivery and payment. Buyer is responsible for delivery expense.

**Inspection of Cattle**

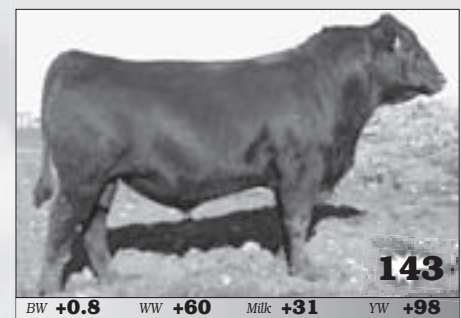
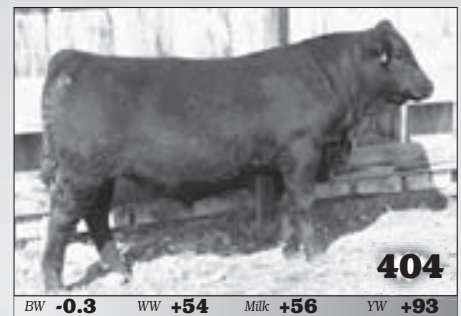
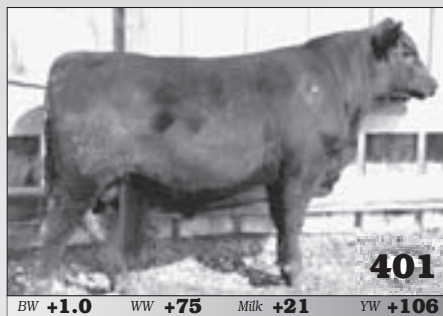
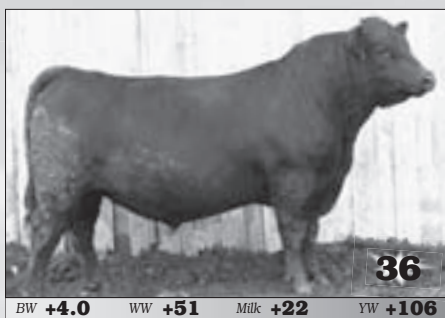
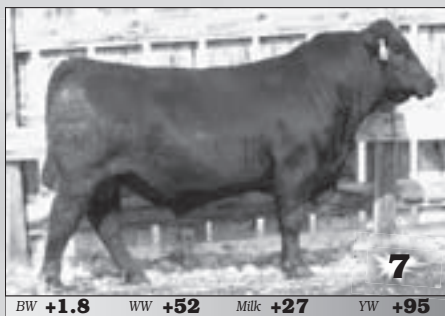
Our cattle are available for inspection at the ranches any time. We invite you to come before the sale to visit, see the sale cattle and view our cow herds.

**Terms and Conditions**

The cattle sell under the suggested terms and conditions of the American Angus Association.



# JOIN US FOR OUR 49<sup>TH</sup> ANNUAL PRODUCTION SALE TUESDAY, NOVEMBER 24, 2009



## SELLING 750 BULLS

★ SELLING TUESDAY NOVEMBER 24 ★

Immediately following 8 am Commercial Female Sale  
**390 Twos & 340 Yearlings**

Many half and three-quarter brothers sell. Sons of Ultimate, Big Spread, Pendleton, Moneymaker, CE Deluxe, Justice, Coal Bank and Payweight plus many other breed leading sires, including Basin Max 602C, Image Maker and In Focus sons and grandsons. Complete PERFORMANCE DATA and EPDs are provided on all bulls. Bulls with bred in PERFORMANCE to ADD POUNDS to your calf crop. Bulls are sold in volume so they are AFFORDABLE by everyone.

## Includes 100 PAP TESTED BULLS

**18-month-old High Altitude Bulls**

Bulls have been PAP tested by Dr. Tim Holt and summered at 7250 ft in Laramie, WY. The bulls will be on display in Laramie and sell during the normal bull sale on Tuesday, November 24 in Hobson, MT via the internet portion of the sale. You can bid live in our sale barn, on the phone or through the internet for this set of PAP tested bulls.

**REQUEST YOUR  
SEPARATE BULL  
SALE BOOK TODAY**



Both Sales will be broadcast live via the internet only on [www.NorthernLivestockVideo.com](http://www.NorthernLivestockVideo.com)

Please call ahead for your buyer number  
1-866-616-5035



# SECOND GENERATION DONOR



**1 STEVENSON ENCHANTRESS D56M**  
 Cow +14479049 birth date: 3/16/2002 Tattoo: D56M  
 B/R NEW DESIGN 036# V D A R NEW TREND 315#  
**B/R NEW DESIGN 323#** B/R BLACKCAP EMPRESS 76  
 B/R RUBY OF TIFFANY 155 V D A R PINE DRIVE 251  
 TIFFANY BR  
 KAPP CENTER LINE BROST POWER DRIVE#  
**JRS ENCHANTRESS 16A** KAPPS ERICA TREND 609#  
 J R S ENCHANTRESS 467U BURTHLENE CANNONEER 21R#  
 J R S ENCHANTRESS 308M

BW	<b>+1.0</b>	WW	<b>+51</b>	Milk	<b>+22</b>	YW	<b>+81</b>
☐ Herd Tag	R239	Marb	<b>+ .59</b>	RE	<b>+ .28</b>	SB	<b>50.82</b>

The finest of the active Stevenson donors from the herd sire producing Enchantress family. The 2009 daughter of this cow is slated to be the lead-off Stevenson heifer in the 2010 National Western Foundation Female Sale. This fantastic producer currently records 6 NR 104, 5 YR 103, 4 IMF 105 and 4 REA 102. This cow has been flushed seven times for a total of 74 viable embryos including embryos selected for export to Russia. The famous dam of this bull sold one-half interest for \$49,000 to Fair View Ranch to top a past female sale for the Stevenson program and she is best known as the dam of the Alta Genetics sire Stevenson Bruno 561G. SELLS OPEN AND READY TO FLUSH.

Reference  
Dam



JRS Enchantress 16A

\$98,000 valued dam of Lot 1

Reference  
Sire



Stevenson Bruno 561G

Maternal Brother

# DAM OF FEATURED HERD BULL DIAMOND BIG SPREAD 9378



**2**

## DIAMOND ENCHANTRESS N135

Cow 14383867 # birth date: 1/12/2003 Tattoo: N135  
 ROCKN D AMBUSH 1531# PARAMONT AMBUSH 2172#  
**DIAMOND AMBUSH 866K** MS BLACKCAP BAND OF R D 1301  
 DIAMOND JANNET H909 BASIN MAX 602C#  
 BASIN GREYSTONE JANNET 6779  
 K F F PRAIRIELENE 532F LANDMK 5155 PRAIRIELENE 8163  
**DIAMOND ENCHANTRESS 658L** G K BETSY BARDOLENA 323A  
 DIAMOND ENCHANTRESS 424F# BASIN RAINMAKER 814Z#  
 DIAMOND ENCHANTRESS 1D

BW **+2.4** WW **+54** Milk **+18** YW **+92**

◇ Herd Tag G378 Marb **+0.30** RE **+0.08** \$B **42.50**

SELLING ONE-HALF INTEREST IN THIS FUTURE DONOR COW. The dam of Diamond Big Spread 9378, an early standout of the 2009 Diamond Dot calf crop, who is a featured herd sire prospect selling as the first calf in the Stevenson Genetics Fall 2009 Sale on November 24th. This powerhouse of a cow is tremendously deep bodied and full of capacity while offering solid outcross genetics. After recording individual weaning and yearling ratios of 127 and 129, respectively, she has gone on to earn 5 BW 94, 5 NR 107, 4 YR 103, with three replacement daughters retained in the herd. She ranks in the top 3% for WW, top 10% for YW and top 30% for IMF, among proven dams. The dam of this cow records 3 NR 103, 3 YR 108, 3 IMF 110 and 3 REA 109. The maternal grandam records 5 NR 111, 3 YR 103, and she has served as a donor as well as being the maternal grandam of Diamond Benchmark 3R65, the \$14,500 top-selling bull of the spring 2007 Stevenson Basin Sale to KCS Angus of Missouri. AI bred 4/23/2009 to 21AR ROUNDUP 7005 and pasture exposed to DIAMOND JUSTICE U502. Ultrasound preg tested to calve February 18, 2010 with a bull calf by DIAMOND JUSTICE U502.

Reference  
Sire



**Diamond Big Spread 9378**

Son of Lot 2, he sells as Lot 401 in our Bull Sale!



# SISTER TO CE DELUXE



**3**

## STEVENSON PRIDE 1028U

Cow +16114109 birth date: 1/25/2008 Tattoo: 1028U  
 HERO 6267 OF R R 2418# R R HERO 6267#  
**H A IMAGE MAKER 0415#** R R EVERELDA ENTENSE 0413  
 H A RITO BLACKCAP 9038 H 96 RITO 2100 7371  
 H 96 BLACKCAP 3835  
 SITZ ALLIANCE 6595# SITZ TRAVELER 8180#  
**FSHK PRIDE 180#** SITZ BARBARAMERE JET 2698#  
 FSHK PRIDE 725 J C H TREND 308#  
 FSHK PRIDE 430

BW **+2.3** WW **+62** Milk **+32** YW **+110**

☐ Herd Tag 1028U Marb **+0.17** RE **+0.10** SB **40.10**  
 SELLING ONE-HALF INTEREST WITH THE OPTION TO DOUBLE THE BID TO ACQUIRE FULL OWNERSHIP. The first and only female to sell from the Stevenson program from the productive Stevenson foundation donor FSHK Pride 180. This fantastic female is the only heifer from the mating that produced the featured Stevenson herd sire Stevenson Hero 1216U. Stevenson CE Deluxe 1914, a maternal brother, is the Stevenson herd sire who has served as a past ORIGen and ABS Global sire after being the high-gaining bull on test at more than 5 pounds per day and the top-selling bull in 2005 at \$26,000. Stevenson On Target 1916, another maternal brother, was also the high-gaining bull on test at over 5 pounds per day and the second top-selling yearling bull in 2007 at \$16,000. Other maternal brothers include Stevenson Coal Bank 1917 who sold for \$10,000 in 2007 and both Stevenson Precision 1366U and Stevenson Ultimate W551 who have been retained to serve as Stevenson herd sires. The dam of this female sold one-half interest for \$75,000 for a \$150,000 valuation to 44 Farms and she currently serves as a joint embryo donor while recording 4 NR 103, 4 YR 111, 18 IMF 100 and 18 REA 105. Confirmed AI bred to SAV BISMARCK 5682 due to calve February 18, 2010.

Reference  
Dam



**FSHK Pride 180**

\$150,000 valued Dam of Lot 3

Reference  
Sire



**Stevenson CE Deluxe 1914**

\$26,000 Maternal Brother to Lot 3

# ELGA DONOR PROSPECT



**4**  
**STEVENSON ELGA U482U**  
 Cow +16156376 birth date: 2/9/2008 Tattoo: U482U  
 HERO 6267 OF R R 2418#  
**HA IMAGE MAKER 0415#**  
 H A RITO BLACKCAP 9038  
 BOYD CAPTAIN 2067#  
**STEVENSON ELGA P190**  
 STEVENSON ELGA L706

**BW +2.2 WW +62 Milk +32 YW +102**

□ Herd Tag U482U Marb +.18 RE +.06 SB 36.91  
 A top donor prospect with an outcross pedigree by HA Image Maker 0415 from the herd sire producing Elga family. The dam of this female led off and topped the 2005 National Western Foundation Female Sale in Denver at \$22,000 and she has gone on to record 2 BR 93, 2 NR 111 and 2 YR 112. The dam of this female is a maternal sister to Stevenson Benchmark N190, the 2004 sale topper at \$51,000, who is a long-time IMF and carcass trait leader featured in the ORigen and ABS Global programs. The grandam topped the 2006 female sale at \$32,000 and went on to sell one-half interest at auction for \$20,000 for a \$40,000 valuation. This outstanding cow family also produced the Semex Las Lilas sire Stevenson Maximum 930C, and the Alta Genetics sire Stevenson Maximum 42C and Stevenson Max Lite. Confirmed AI bred to SAV BISMARCK 5682 due to calve January 26, 2010.





# LUCY 178E GRANDDAUGHTER

Reference  
Dam



Basin-Lucy 178E

5

## STEVENSON LUCY R117U

Cow +16156346 birth date: 3/16/2008 Tattoo: R117U  
 S S OBJECTIVE T510 OT26# S S TRAVELER 6807 T510#  
**QUAKER HILL OBJECTIVE 3J15** S S MISS RITA R011 7R8  
 QUAKER HILL QUEEN 1L4# BW/QHF BLACKCAP LAD  
 ANKONY QUEEN Q H F R981  
 VERMILION PAYWEIGHT J847# VERMILION DATELINE 7078#  
**BASIN LUCY 504M** VERMILION LASS 7969  
 BASIN LUCY 178E BASIN MAX 602C#  
 BASIN LUCY 855A#

BW **+3.7** WW **+71** Milk **+32** YW **+123**

□ Herd Tag R117U Marb **+0.09** RE **+0.39** SB **50.22**

A full sister to the Stevenson consignment top-seller of the 2009 National Western Foundation Female Sale in Denver where she sold one-half interest for \$15,000 for a \$30,000 valuation with other full sisters selling for \$10,500 and \$9,500 in the 2008 Stevenson Genetics Female Sale where their dam was the top-selling Lot 1 female to Sauk Valley Angus and Craigmore Farms. Stevenson Objective R104U, a full brother, is retained for use in the Stevenson program. The grandam is the \$410,000 valued Basin Lucy 178E, who remains the top growth cow of her generation and has taken her place among the top-income-producing cows of the Angus breed. Dam records 4 NR 106, 4 YR 108 and 15 REA 103, while the legendary grandam records 7 NR 109, 7 YR 109, 86 IMF 104 and 85 REA 102. This heifer ranks in the top 1% for both WW and YW while ranking in the top 10% for Milk and RE. Confirmed AI bred to SAV Bismarck 5682 and due to calve January 23, 2010.

Reference  
Sire



Quaker Hill Objective 3J15

Reference  
Dam



Basin-Lucy 504M

\$60,000 valued Dam of Lot 5

Reference  
Dam



Stevenson-Lucy I852U

\$30,000 valued Full Sister to Lot 5

# FEATURED LUCY HEIFER CALF



**6**

**6**

## DIAMOND LUCY W492

Cow +16335191 birth date: 2/4/2009 Tattoo: W492  
 S S OBJECTIVE T510 OT26# S S TRAVELER 6807 T510#  
**G A R ULTIMATE** S S MISS RITA R011 7R8  
 G A R LOAD UP 1314 RAB-GAR LOAD UP 4049J  
 G A R NEW DESIGN 80  
 BASIN FRANCHISE P142 C A FUTURE DIRECTION 5321#  
**DIAMOND LUCY 9S26** BASIN CHLOE 812L  
 BASIN LUCY 6433 BON VIEW NEW DESIGN 1407#  
 BASIN LUCY 178E

**BW I+0.7 WW I+61 Milk I+34 YW I+107**

◇ Herd Tag W492 Marb I+.64 RE I+.46 \$B 63.49

An opportunity to get in on a great next generation Lucy female with an elite EPD profile. This heifer ranks in the lowest 20% for BW, the top 2% for WW and YW, and the top 10% for IMF and REA. The dam of this heifer sold one-half interest to Split Diamond Angus of Whitehall, Montana, and serves as a joint embryo donor with Diamond Dot, recording 1 NR 127 and 1 YR 116. A full sister to the dam of this heifer sold as a bred heifer in the 2007 Stevenson Basin Sale for \$30,000 to Sonrise Ranches of Oklahoma. The grandam was a feature of a past Stevenson Basin Female Sale who is a prominent member of one of the most valuable flushes of females in breed history descending from the legendary Basin Lucy 178E who sold one-half interest for \$205,000 for a \$410,000 valuation at 14 years of age and has taken her place among top-income-producing cows of the Angus breed, remaining the top growth cow of her generation.

Reference  
Dam



**Basin Lucy 6433**

\$130,000 valued Grandam of Lot 6

Reference  
Sire



**G A R Ultimate**

\$100,000 Sire of Lot 6



# SIBLING PREGNANCIES TO ROUNDUP

Reference  
Dam



**21AR Blackbird Lady F645**

## 7 BLACKBIRD LADY HEIFER PREGNANCY

Cow

S A V FINAL ANSWER 0035  
**HARB PENDLETON 765 J H**  
H A R B BLACK LADY 375 J H#

B C C BUSHWACKER 41-93#  
**21AR BLACKBIRD LADY F645**  
21AR BLACKBIRD LADY C645

SITZ TRAVELER 8180#  
S A V EMULOUS 8145  
H A R B HIGH PLAINS 975 JH#  
H A R B BLACK LADY 073 J H#

PARAMONT AMBUSH 2172#  
R C ANITA T BANDO 918903  
SCHURRTOP SUPREME#  
21 A R BLACKBIRD LADY 645

<b>Sire EPDs</b>	BW <b>-3.6</b>	WW <b>+94</b>	Milk <b>+27</b>	YW <b>+139</b>
	Marb <b>+0.23</b>	RE <b>+0.00</b>	SB <b>44.60</b>	

<b>Dam EPDs</b>	BW <b>+3.0</b>	WW <b>+51</b>	Milk <b>+22</b>	YW <b>+82</b>
	Marb <b>+0.27</b>	RE <b>+0.24</b>	SB <b>36.32</b>	

Due February 12, 2010 in a registered Angus recipient. A full sister to 21AR Roundup 7005, the \$49,000 all-time record-selling bull of the North Dakota Angus Bull Test, selected by Stevenson Genetics and their partners after recording BW 70 pounds, BWR 90, WW 840 pounds, WWR 124 along with a 17.7 REA and a 4.98 IMF. This unique outcross mating by the extreme EPD sire HARB Pendleton 765 JH is from a donor dam who also serves as a foundation female for Stevenson Genetics and their partners posting 2 BR 89 and 2 NR 111. A full sister sold for \$37,000 as the top-selling pregnancy of the 2009 Monarch Sale to the Turner and Stallion programs in Texas and another highlighted the 2009 Express Sale.

## 8 BLACKBIRD LADY HEIFER PREGNANCY

Cow

G A R GRID MAKER#  
**S A V BISMARCK 5682**  
S A V ABIGALE 0451

B C C BUSHWACKER 41-93#  
**21AR BLACKBIRD LADY F645**  
21AR BLACKBIRD LADY C645

G D A R TRAVELER 044#  
G A R PRECISION 2536  
SCHOENES FIX IT 826#  
S A V ABIGALE 6062

PARAMONT AMBUSH 2172#  
R C ANITA T BANDO 918903  
SCHURRTOP SUPREME#  
21 A R BLACKBIRD LADY 645

<b>Sire EPDs</b>	BW <b>+0.1</b>	WW <b>+57</b>	Milk <b>+23</b>	YW <b>+102</b>
	Marb <b>+0.15</b>	RE <b>+0.45</b>	SB <b>40.86</b>	

<b>Dam EPDs</b>	BW <b>+3.0</b>	WW <b>+51</b>	Milk <b>+22</b>	YW <b>+82</b>
	Marb <b>+0.27</b>	RE <b>+0.24</b>	SB <b>36.32</b>	

Due February 12, 2010 in a registered Angus recipient. A maternal sister to the \$49,000 21AR Roundup 7005 by the Genex/CRI outcross calving-ease sire SAV Bismarck 5682. This unique and exciting confirmed heifer pregnancy is from a donor dam owned by Stevenson Genetics and their partners recording 2 BR 89 and 2 NR 111, producing confirmed heifer pregnancies that highlighted both the 2009 Monarch and 2009 Express sales. The famous maternal brother to this heifer is the \$49,000 all-time top-selling bull of the North Dakota Angus Bull Test who records BW 70 pounds, BWR 90, WW 840 pounds, WWR 124, REA 17.7 and IMF 4.98.

Reference  
Sire



**21AR Roundup 7005**

\$49,000 Full Sibling to LOT 7

Reference  
Sire



**S A V Bismarck 5682**

Sire of Lot 8

# CE DELUXE DAUGHTERS BRED TO ROUNDUP



**9**

## DIAMOND NOLA U579

Cow 16016502 birth date: 2/10/2008 Tattoo: U579  
 C A FUTURE DIRECTION 5321# G A R PRECISION 1680#  
**STEVENSON CE DELUXE 1914** C A MISS POWER FIX 308  
 FSHK PRIDE 180# SITZ ALLIANCE 6595#  
 FSHK PRIDE 725  
 BASIN PAYWEIGHT 959M VERMILION PAYWEIGHT J847#  
**DIAMOND NOLA 2915** BASIN TROJAN ERICA 7169#  
 DIAMOND NOLA M797 SUMMITCREST PRIME CUT 1G42#  
 KEYSTONE NOLA 292#

BW	<b>+2.8</b>	WW	<b>+59</b>	Milk	<b>+27</b>	YW	<b>+103</b>
----	-------------	----	------------	------	------------	----	-------------

◇ Herd Tag U579 Marb **+62** RE **+24** \$B **57.93**

The first of a great set of elite EPD females sired by Stevenson CE Deluxe 1914. This heifer records WR 108 and YR 105 along with IMF 103 and REA 106. The dam of this heifer has 2 NR 103, 2 YR 100, 2 IMF 100 and 2 REA 102. This heifer ranks in the top 4% for YW and in the top 10% for \$B. AI bred to 21AR ROUNDUP 7005 due to calve January 25, 2010.

**10**

## DIAMOND ENCHANTRESS S599

Cow 16016479 birth date: 2/5/2008 Tattoo: 8599  
 C A FUTURE DIRECTION 5321# G A R PRECISION 1680#  
**STEVENSON CE DELUXE 1914** C A MISS POWER FIX 308  
 FSHK PRIDE 180# SITZ ALLIANCE 6595#  
 FSHK PRIDE 725  
 VERMILION YELLOWSTONE# VERMILION DATELINE 7078#  
**DIAMOND ENCHANTRESS R479** VERMILION B JESTRESS 3912  
 DIAMOND ENCHANTRESS 424F# BASIN RAINMAKER 814Z#  
 DIAMOND ENCHANTRESS 1D

BW	<b>+2.7</b>	WW	<b>+50</b>	Milk	<b>+27</b>	YW	<b>+98</b>
----	-------------	----	------------	------	------------	----	------------

◇ Herd Tag 8599 Marb **+73** RE **+23** \$B **60.01**

This elite EPD female sired by Stevenson CE Deluxe 1914 ranks in the top 5% for \$B and top 10% for YW from a dam with 2 NR 105, 2 YR 107, 2 IMF 109 and 2 REA 105. The maternal grandam records 5 NR 111, 3 YR 103 and is also the maternal grandam of the \$14,500 Diamond Benchmark 3R65. AI bred to 21AR ROUNDUP 7005 due to calve January 25, 2010. Examined safe.



10% of the sale of LOT 10 will be donated to the Montana Junior Angus Association as part of their Ten for 2010 Campaign offering financial support for leadership conferences, national show trips, awards and other events that are crucial to the growth of Montana's young Angus enthusiast.



**11**

## DIAMOND BLACKCAP S523

Cow 16016514 birth date: 2/9/2008 Tattoo: 8523  
 C A FUTURE DIRECTION 5321# G A R PRECISION 1680#  
**STEVENSON CE DELUXE 1914** C A MISS POWER FIX 308  
 FSHK PRIDE 180# SITZ ALLIANCE 6595#  
 FSHK PRIDE 725  
 BASIN MAX 602C# G T MAXIMUM#  
**DIAMOND BLACKCAP R393** BASIN ELINE ERICA 315U#  
 DIAMOND BLACKCAP 960N# J W JURITE 16#  
 DIAMOND BLACKCAP 731J#

BW	<b>+2.1</b>	WW	<b>+52</b>	Milk	<b>+26</b>	YW	<b>+93</b>
----	-------------	----	------------	------	------------	----	------------

◇ Herd Tag 8523 Marb **+55** RE **+12** \$B **50.32**

A daughter of Stevenson CE Deluxe 1914 from the high production Blackcap cow family. The maternal grandam of this heifer records 4 NR 105 and the third dam is a full sister to the \$18,000 Diamond Max 815D and earned 8 NR 106, 7 YR 102, 7 IMF 102 and 7 REA 106. AI bred to 21AR ROUNDUP 7005 due to calve January 27, 2010. Examined safe.

**12**

## DIAMOND JANNET S663

Cow 16104365 birth date: 2/11/2008 Tattoo: 8663  
 C A FUTURE DIRECTION 5321# G A R PRECISION 1680#  
**STEVENSON CE DELUXE 1914** C A MISS POWER FIX 308  
 FSHK PRIDE 180# SITZ ALLIANCE 6595#  
 FSHK PRIDE 725  
 DIAMOND DATELINE 163P BASIN DATELINE 752L  
**DIAMOND JANNET 6337** DIAMOND LUCY 419L#  
 DIAMOND JANNET 3902 BASIN MAX 823L  
 DIAMOND JANNET 171J

BW	<b>+2.9</b>	WW	<b>+58</b>	Milk	<b>+24</b>	YW	<b>+107</b>
----	-------------	----	------------	------	------------	----	-------------

◇ Herd Tag 8663 Marb **+56** RE **+25** \$B **55.99**

A daughter of a first calf heifer and sired by Stevenson CE Deluxe 1914, LOT 12 ranks in the top 4% for WW, the top 2% for YW and the top 10% for \$B. This cow earned BR 95, WR 104, YR 105, IMF 103 and REA 109 as her dam's first calf in the AHIR program. The grandam records 3 BR 98, 3 NR 106, 3 YR 103, 3 IMF 104 and 3 REA 102. AI bred to 21AR ROUNDUP 7005 due to calve January 27, 2010.





# NEW BRANCH OF



Reference  
Dam

Diamond Lucy 808L

Dam of Lot 13

**13**

## DIAMOND LUCY 180R

Cow 14983190 birth date: 1/31/2005 Tattoo: 180R  
 G T MAXIMUM# SCOTCH CAP#  
**BASIN MAX 602C#** GT MISS TRAVELER 58#  
 BASIN ELINE ERICA 315U# G D A R RAINMAKER 340#  
 BASIN ELINE ERICA 1313  
 J W JUSRITE 16# N BAR JUSRITE 4324A#  
**DIAMOND LUCY 808L#** OAK FRONT LUCY 16  
 DIAMOND RAINMAKER 154E#  
 DIAMOND LUCY 503H# DIAMOND LUCY 191E

BW **+3.9** WW **+52** Milk **+29** YW **+98**

◇ Herd Tag G506 Marb **+0.44** RE **+0.22** \$B **51.58**

This prolific Diamond Dot donor is from an outstanding branch of the high-performance Lucy family sired by Basin Max 602C making her a paternal sister to the legendary Basin Lucy 178E. This cow is also a full sister to Diamond Max 180N, the highest performance son of Basin Max 602C. This female recorded 2 WR 108, 1 YR 106, 11 IMF 122 and REA 108, and has gone on to earn 2 WR 119, 1 YR 129, 11 IMF 106 and 11 REA 104 with progeny highlighting this 2009 sale. The dam of this cow earned 5 WR 113 and 5 YR 113 while the grandam recorded 4 WR 106 and 3 WR 110. LOT 13 has produced an average of 15 embryos per flush.

SELLS OPEN AND READY TO FLUSH.

## 13A SIX LUCY X HOOVER EMBRYOS

SYDGEN C C & 7 S A F CONNECTION#  
**HOOVER DAM** SYDGEN FOREVER LADY 4087  
 ERICA OF ELLSTON C124# TC GRIDIRON 258  
 ERICA OF ELLSTON V65  
 BASIN MAX 602C# G T MAXIMUM#  
**DIAMOND LUCY 180R** BASIN ELINE ERICA 315U#  
 DIAMOND LUCY 808L# J W JUSRITE 16#  
 DIAMOND LUCY 503H#

Sire EPDs BW **+2.5** WW **+72** Milk **+27** YW **+124**

Marb **+0.38** RE **+0.71** \$B **64.63**

Dam EPDs BW **+3.9** WW **+52** Milk **+29** YW **+98**

Marb **+0.44** RE **+0.22** \$B **51.58**

SELLING SIX FROZEN EMBRYOS. A special embryo mating by the \$47,500 Stevenson Genetics sire Hoover Dam from the productive Diamond Lucy 180R who records 2 WR 119, 1 YR 129, 11 IMF 106 and 11 REA 104 and is a full sister to Diamond Max 180N as well as being a paternal sister to the legendary Basin Lucy 178E from the same family.

**13B**

## SIX LUCY X ULTIMATE EMBRYOS

S S OBJECTIVE T510 0T26# S S TRAVELER 6807 T510#  
**G A R ULTIMATE** S S MISS RITA R011 7R8  
 G A R LOAD UP 1314 RAB-GAR LOAD UP 4049J  
 G A R NEW DESIGN 80  
 BASIN MAX 602C# G T MAXIMUM#  
**DIAMOND LUCY 180R** BASIN ELINE ERICA 315U#  
 DIAMOND LUCY 808L# J W JUSRITE 16#  
 DIAMOND LUCY 503H#

Sire EPDs BW **+1.0** WW **+71** Milk **+28** YW **+120**

Marb **+0.63** RE **+0.56** \$B **70.11**

Dam EPDs BW **+3.9** WW **+52** Milk **+29** YW **+98**

Marb **+0.44** RE **+0.22** \$B **51.58**

SELLING SIX FROZEN EMBRYOS. This embryo mating is sired by the \$100,000 Stevenson Genetics sire GAR Ultimate from the productive Diamond Lucy 180R who records 2 WR 119, 1 YR 129, 11 IMF 106 and 11 REA 104 and is a full sister to Diamond Max 180N as well as being a paternal sister to the legendary Basin Lucy 178E from the same family.



Reference  
Sire

Hoover Dam

Sire of Lot 13A

Reference  
Sire



G.A.R. Ultimate

Sire of Lot 13B

# THE LUCY COW FAMILY



**14**

## DIAMOND LUCY 05U1

Cow +16110240 birth date: 2/6/2008 Tattoo: 05U1  
 RAFTER S RONAN TEX 20K  
**F V 20K KING 308M**  
 QUEEN 362E  
 BASIN MAX 602C#  
**DIAMOND LUCY 180R**  
 DIAMOND LUCY 808L#

RONAN TEX 10X  
 GLENNIE PRIDE 69E  
 TARAUS JAZMAN 59Y  
 QUEEN L4 587U  
 G T MAXIMUM#  
 BASIN ELINE ERICA 315U#  
 J W JURRITE 16#  
 DIAMOND LUCY 503H#

BW **I+3.4** WW **I+51** Milk **I+22** YW **I+92**

◇ Herd Tag 05U1 Marb +.41 RE +.26 SB 47.65

**F V 20K King 308M**

Sire of Lot 14

LOT 14 is a unique outcross female from the Lucy family sired by the Canadian outcross sire FV 20K King 308M from Diamond Lucy 180R. This heifer records IMF 141 and REA 127. The dam of this heifer is a full sister to Diamond Max 180N, the highest performance son of Basin Max 602C. AI bred to GAR ULTIMATE due January 28, 2010.



**15**

## DIAMOND LUCY 59W0

Cow +16400114 birth date: 2/3/2009 Tattoo: 59W0  
 ER JUSTICE N013  
**DIAMOND JUSTICE 901S**  
 ERISKAY OF ER J238#  
 BASIN MAX 602C#  
**DIAMOND LUCY 180R**  
 DIAMOND LUCY 808L#

ER FALCON K177#  
 JR HENRIETTA 001L  
 E R KNIGHT 529  
 ERISKAY OF R R 1448  
 G T MAXIMUM#  
 BASIN ELINE ERICA 315U#  
 J W JURRITE 16#  
 DIAMOND LUCY 503H#

BW **I+1.4** WW **I+54** Milk **I+26** YW **I+98**

◇ Herd Tag 59W0 Marb **I+.52** RE **I+.22** SB **50.55**

This outcross prospect sired by Diamond Justice 901S from the Diamond Dot donor Diamond Lucy 180R ranks in the top 10% for both WW and YW. The high-performance dam of this heifer has 2 WR 119 and 1 YR 129 combined with 11 IMF 106 and 11 REA 104.



**16**

## DIAMOND LUCY 300W

Cow +16343071 birth date: 2/17/2009 Tattoo: 300W  
 BOYD ON TARGET 1083  
**STEVENSON MONEYMAKER R185**  
 STEVENSON CLOVA PRIDE L888#  
 BASIN MAX 602C#  
**DIAMOND LUCY 180R**  
 DIAMOND LUCY 808L#

S A F 598 BANDO 5175#  
 BOYD FOREVER LADY 7095  
 VDAR AMBUSH 2478  
 STEVENSON CLOVA PRIDE 712H  
 G T MAXIMUM#  
 BASIN ELINE ERICA 315U#  
 J W JURRITE 16#  
 DIAMOND LUCY 503H#

BW **I+3.8** WW **I+58** Milk **I+27** YW **I+108**

◇ Herd Tag 300W Marb **I+.45** RE **I+.14** SB **49.79**

A daughter of the high-valued Stevenson MoneyMaker R185 from the productive and prolific Diamond Lucy 180R who records 2 WR 119, 1 YR 129, 11 IMF 106 and 11 REA 104. This heifer ranks in the upper percentiles for EPDs.



# ULTIMATE DAUGHTERS



## 17 STEVENSON ANNIE W315

Cow 16371058 birth date: 2/21/2009 Tattoo: W315  
 S S OBJECTIVE T510 OT26# S S TRAVELER 6807 T510#  
**G A R ULTIMATE** S S MISS RITA R011 7R8  
 G A R LOAD UP 1314 RAB-GAR LOAD UP 4049J  
 G A R NEW DESIGN 80  
 STEVENSON MAX J180 BASIN MAX 602C#  
**STEVENSON ANNIE 5393#** BLACK TOOTH LADY B 380#  
 STEVENSON ANNIE 430E G D A R RAINMAKER 340#  
 JRS ANNIE 971Z#

BW **+1.6** WW **+54** Milk **+28** YW **+93**

☐ Herd Tag W315 Marb **+33** RE **+22** SB **47.52**

The first of a phenomenal set of paternal sisters selling from the top of the first calf crop by the \$100,000 Stevenson Genetics sire GAR Ultimate. The dam of this elite EPD heifer records 4 WR 105, 4 YR 105, and she is a granddaughter of the Stevenson foundation Pathfinder Sires Basin Max 602C and GDAR Rainmaker 340.

## 19 STEVENSON HUTCH LASS W213

Cow 16371069 birth date: 2/17/2009 Tattoo: W213  
 S S OBJECTIVE T510 OT26# S S TRAVELER 6807 T510#  
**G A R ULTIMATE** S S MISS RITA R011 7R8  
 G A R LOAD UP 1314 RAB-GAR LOAD UP 4049J  
 G A R NEW DESIGN 80  
 BASIN MAX 602C# G T MAXIMUM#  
**STEVENSON HUTCH LASS H38M** BASIN ELINE ERICA 315U#  
 STEVENSON HUTCH LASS H29H# BASIN AMBUSH 3905#  
 STEVENSON HUTCH LASS H12F

BW **-1.5** WW **+56** Milk **+24** YW **+102**

☐ Herd Tag W213 Marb **+42** RE **+34** SB **53.26**

A special attraction female from the first calf crop by the \$100,000 GAR Ultimate from a proven dam by the Pathfinder Sire Basin Max 602C combining 4 BR 96, 4 WR 100, 4 YR 102, 5 IMF 112 and 5 REA 109. This heifer ranks in the upper percentiles in EPD traits.

## 18 STEVENSON PRIDE LADY W224

Cow 16301082 birth date: 2/7/2009 Tattoo: W224  
 S S OBJECTIVE T510 OT26# S S TRAVELER 6807 T510#  
**G A R ULTIMATE** S S MISS RITA R011 7R8  
 G A R LOAD UP 1314 RAB-GAR LOAD UP 4049J  
 G A R NEW DESIGN 80  
 A A R RAMBLER 779# A A R RAMBLER 356  
**STEVENSON PRIDE LADY 0662** A A R BLACKBIRD 582  
 STEVENSON PRIDE LADY 6360 STEVENSON ENCORE 5217  
 STEVENSON PRIDE LADY 4066

BW **+1.1** WW **+59** Milk **+24** YW **+96**

☐ Herd Tag W224 Marb **+45** RE **+26** SB **50.96**

This exciting outcross heifer is from the first calf crop by the \$100,000 Stevenson Genetics sire GAR Ultimate from a solid producing dam by the proven sire AAR Rambler 779. This elite EPD heifer is from a dam who records 5 WR 99, 4 YR 104, along with 4 REA 103.

## 20 STEVENSON FREEDOM W257

Cow 16301079 birth date: 2/5/2009 Tattoo: W257  
 S S OBJECTIVE T510 OT26# S S TRAVELER 6807 T510#  
**G A R ULTIMATE** S S MISS RITA R011 7R8  
 G A R LOAD UP 1314 RAB-GAR LOAD UP 4049J  
 G A R NEW DESIGN 80  
 TC MOONSHINE 001# CONNEALY FOREFRONT#  
**STEVENSON FREEDOM 0302#** TC MOONSHINE 7002  
 STEVENSON FREEDOM 890K STEVENSON RAINMAKER 544G  
 STEVENSON MISS FREEDOM 851H

BW **+1.2** WW **+61** Milk **+29** YW **+93**

☐ Herd Tag W257 Marb **+25** RE **+30** SB **47.10**

A high-performing heifer from the first calf crop by the \$100,000 Stevenson Genetics sire GAR Ultimate from a dam by the high selling TC Moonshine 001. This elite EPD heifer is from a dam who records 6 WR 106.

# ULTIMATE DAUGHTERS



**21** **STEVENSON BLACKJET 2549**  
 Cow 16301119 birth date: 2/5/2009 Tattoo: 2549  
 S S OBJECTIVE T510 OT26# S S TRAVELER 6807 T510#  
**G A R ULTIMATE** S S MISS RITA R011 7R8  
 G A R LOAD UP 1314 RAB-GAR LOAD UP 4049J  
 G A R NEW DESIGN 80  
 ROCKN D AMBUSH 1531# PARAMONT AMBUSH 2172#  
**STEVENSON BLACKJET 9102** MS BLACKCAP BAND OF R D 1301  
 STEVENSON BLACKJET 586J# BASIN RAINMAKER 654X#  
 JRS BLACKJET 53A

BW	<b>+3.8</b>	WW	<b>+62</b>	Milk	<b>+23</b>	YW	<b>+98</b>
----	-------------	----	------------	------	------------	----	------------

□ Herd Tag 2549 Marb **+50** RE **+36** SB **55.33**  
 A special attraction female from the first calf crop by the Stevenson Genetics sire GAR Ultimate selected as the \$100,000 top-selling bull of the 2008 Gardiner Angus Sale. The dam of this heifer is a solid producing daughter of Rockn D Ambush 1531.

**23** **DIAMOND ENCHANTRESS 61W5**  
 Cow 16336052 birth date: 2/18/2009 Tattoo: 61W5  
 S S OBJECTIVE T510 OT26# S S TRAVELER 6807 T510#  
**G A R ULTIMATE** S S MISS RITA R011 7R8  
 G A R LOAD UP 1314 RAB-GAR LOAD UP 4049J  
 G A R NEW DESIGN 80  
 ER FOCUS M244 ER FOCUS K189  
**DIAMOND ENCHANTRESS S320** ERISKAY OF ER J238#  
 DIAMOND ENCHANTRESS N521 GARDENS EXPEDITION#  
 DIAMOND ENCHANTRESS 424F#

BW	<b>I+1.2</b>	WW	<b>I+55</b>	Milk	<b>I+25</b>	YW	<b>I+100</b>
----	--------------	----	-------------	------	-------------	----	--------------

◇ Herd Tag 61W5 Marb **I+48** RE **I+33** SB **54.97**  
 This daughter of the \$100,000 GAR Ultimate is from the herd sire producing Enchantress family. The dam of this heifer produced her first calf with 1 BR 95, 1 WR 101, 1 YR 101 and 1 REA 113. The third dam earned 5 WR 111 and served as an embryo donor.

**22** **STEVENSON DUCHESS 2249**  
 Cow 16301111 birth date: 2/3/2009 Tattoo: 2249  
 S S OBJECTIVE T510 OT26# S S TRAVELER 6807 T510#  
**G A R ULTIMATE** S S MISS RITA R011 7R8  
 G A R LOAD UP 1314 RAB-GAR LOAD UP 4049J  
 G A R NEW DESIGN 80  
 PAWS UP ALLIANCE 9561 SITZ ALLIANCE 6595#  
**STEVENSON DUCHESS 6212** SITZ EVERELDA ENTENSE 023  
 STEVENSON DUCHESS E136 G D A R RAINMAKER 340#  
 M D G DUCHESS 1028

BW	<b>-0.8</b>	WW	<b>+53</b>	Milk	<b>+28</b>	YW	<b>+92</b>
----	-------------	----	------------	------	------------	----	------------

□ Herd Tag 2249 Marb **+46** RE **+32** SB **49.09**  
 An opportunity to select among the very best heifers of the first calf crop in the Stevenson program by the \$100,000 GAR Ultimate who is considered by many to be the top breeding son of the extreme EPD sire SS Objective T510 OT26. The dam of this heifer is a granddaughter of the Pathfinder Sires Sitz Alliance 6595 and GDAR Rainmaker 340 with 5 BR 96, 5 WR 101, 5 YR 100, 5 IMF 100 and 5 REA 106.

**24** **DIAMOND ENCHANTRESS W464**  
 Cow 16336053 birth date: 2/19/2009 Tattoo: W464  
 S S OBJECTIVE T510 OT26# S S TRAVELER 6807 T510#  
**G A R ULTIMATE** S S MISS RITA R011 7R8  
 G A R LOAD UP 1314 RAB-GAR LOAD UP 4049J  
 G A R NEW DESIGN 80  
 GARDENS EXPEDITION# N BAR EMULATION EXT#  
**DIAMOND ENCHANTRESS P434** GREEN GARDEN GINA 2268 S2  
 DIAMOND ENCHANTRESS 424F# BASIN RAINMAKER 814Z#  
 DIAMOND ENCHANTRESS 1D

BW	<b>+0.7</b>	WW	<b>+53</b>	Milk	<b>+26</b>	YW	<b>+96</b>
----	-------------	----	------------	------	------------	----	------------

◇ Herd Tag W464 Marb **I+45** RE **I+33** SB **51.68**  
 Another daughter of the \$100,000 GAR Ultimate from the herd sire producing Enchantress family and is also the granddam of Diamond Big Spread 9378 and the \$14,500 Diamond Benchmark 3R65. The granddam records 5 WR 111, 3 YR 103, and served as a prolific embryo donor.



# ULTIMATE DAUGHTERS



**25** **STEVENSON DONNA 1359**  
 Cow 16371062 birth date: 2/22/2009 Tattoo: 1359  
 S S OBJECTIVE T510 OT26# S S TRAVELER 6807 T510#  
**G A R ULTIMATE** S S MISS RITA R011 7R8  
 G A R LOAD UP 1314 RAB-GAR LOAD UP 4049J  
 G A R NEW DESIGN 80  
 DIAMOND RAINMAKER 154E# BLACK TOOTH RAINMAKER 911  
**STEVENSON DONNA 786L** BASIN BLACKCAP C S 815A  
 STEVENSON DONNA 449C# GARDENS FORTUNE 9213 S2  
 JRS DONNA 14Z#

**27** **STEVENSON DONNA 3549**  
 Cow 16358224 birth date: 2/25/2009 Tattoo: 3549  
 S S OBJECTIVE T510 OT26# S S TRAVELER 6807 T510#  
**G A R ULTIMATE** S S MISS RITA R011 7R8  
 G A R LOAD UP 1314 RAB-GAR LOAD UP 4049J  
 G A R NEW DESIGN 80  
 BON VIEW NEW DESIGN 1407# B/R NEW DESIGN 036#  
**STEVENSON DONNA 1353#** BON VIEW PRIDE 664  
 STEVENSON DONNA 786L DIAMOND RAINMAKER 154E#  
 STEVENSON DONNA 449C#

BW **+2.2** WW **+56** Milk **+25** YW **+96**

BW **+1.1** WW **+57** Milk **+29** YW **+102**

☐ Herd Tag 1359 Marb **+.46** RE **+1.2** \$B **49.76**  
 A daughter of the \$100,000 GAR Ultimate from the renowned Donna family. This elite EPD female is from a dam who records 4 BR 97, 4 WR 104, 3 YR 104 and 5 IMF 101. The third dam earned 12 WR 104 and 11 YR 104.

☐ Herd Tag 3549 Marb **+68** RE **+22** \$B **58.80**  
 This elite EPD Donna heifer is from the first calf crop by the \$100,000 GAR Ultimate produced from a dam by Bon View New Design 1407. The dam of this heifer has 4 WR 104, 4 YR 105, 4 IMF 114, while the grandam has 4 WR 104, 3 YR 104 and 5 IMF 101.

**26** **STEVENSON WILSAR 2339**  
 Cow 16287160 birth date: 2/6/2009 Tattoo: 2339  
 S S OBJECTIVE T510 OT26# S S TRAVELER 6807 T510#  
**G A R ULTIMATE** S S MISS RITA R011 7R8  
 G A R LOAD UP 1314 RAB-GAR LOAD UP 4049J  
 G A R NEW DESIGN 80  
 BON VIEW NEW DESIGN 1407# B/R NEW DESIGN 036#  
**STEVENSON WILSAR 0132** BON VIEW PRIDE 664  
 STEVENSON WILSAR K823 STEVENSON ROLLING THUNDER#  
 WILSAR EZ LADY W19H

**28** **STEVENSON CLOVA PRIDE 2349**  
 Cow 16283130 birth date: 1/27/2009 Tattoo: 2349  
 S S OBJECTIVE T510 OT26# S S TRAVELER 6807 T510#  
**G A R ULTIMATE** S S MISS RITA R011 7R8  
 G A R LOAD UP 1314 RAB-GAR LOAD UP 4049J  
 G A R NEW DESIGN 80  
 BON VIEW NEW DESIGN 1407# B/R NEW DESIGN 036#  
**STEVENSON CLOVA PRIDE 0532** BON VIEW PRIDE 664  
 STEVENSON CLOVA PRIDE 8870 ROCKN D AMBUSH 1531#  
 STEVENSON CLOVA PRIDE 4DH

BW **+0.2** WW **+53** Milk **+28** YW **+97**

BW **-0.2** WW **+57** Milk **+27** YW **+99**

☐ Herd Tag 2339 Marb **+68** RE **+23** \$B **56.48**  
 Bred for a combination of extreme EPDs, this heifer is from the first calf crop by the \$100,000 GAR Ultimate from a dam by Bon View New Design 1407 with 5 BR 100, 5 WR 102, 4 YR 105, 4 IMF 116 and 4 REA 106. The grandam is by the proven Pathfinder Sire Stevenson Rolling Thunder to complete an intriguing pedigree tabulation.

☐ Herd Tag 2349 Marb **+66** RE **+36** \$B **59.79**  
 A three-quarter sister to the previous two heifers from the successful blending of GAR Ultimate with Bon View New Design 1407. The dam of this high-indexing heifer records 6 BR 98, 6 WR 105, 4 YR 107, 4 IMF 109 and 4 REA 106, from the noted Clova Pride family.



# ULTIMATE DAUGHTERS



## 29 STEVENSON CLOVA PRIDE W434

Cow 16283146 birth date: 1/30/2009 Tattoo: W434  
 S S OBJECTIVE T510 OT26# S S TRAVELER 6807 T510#  
**G A R ULTIMATE** S S MISS RITA R011 7R8  
 G A R LOAD UP 1314 RAB-GAR LOAD UP 4049J  
 G A R NEW DESIGN 80  
 VERMILION YELLOWSTONE# VERMILION DATELINE 7078#  
**STEVENSON CLOVA PRIDE 5324** VERMILION B JESTRESS 3912  
 STEVENSON CLOVA PRIDE 487E IMPACT 2000 G G#  
 JRS CLOVA PRIDE 945Z

BW **+2.7** WW **+58** Milk **+23** YW **+105**

☐ Herd Tag W434 Marb **+0.56** RE **+0.27** SB **59.11**

Another daughter of the \$100,000 GAR Ultimate from the herd sire producing Clova Pride family. This elite EPD female is from a dam by the high-growth and high-marbling sire Vermilion Yellowstone.

## 30 STEVENSON LAVILLION W329

Cow 16301088 birth date: 2/3/2009 Tattoo: W329  
 S S OBJECTIVE T510 OT26# S S TRAVELER 6807 T510#  
**G A R ULTIMATE** S S MISS RITA R011 7R8  
 G A R LOAD UP 1314 RAB-GAR LOAD UP 4049J  
 G A R NEW DESIGN 80  
 TC MOONSHINE 001# CONNEALY FOREFRONT#  
**STEVENSON LAVILLION 1093** TC MOONSHINE 7002  
 STEVENSON LAVILLION 917L STEVENSON ROLLING THUNDER#  
 STEVENSON LAVILLION D32J

BW **+3.7** WW **+62** Milk **+28** YW **+95**

☐ Herd Tag W329 Marb **+0.33** RE **+0.24** SB **49.03**

Another outstanding heifer from the top of the first calf crop by the \$100,000 Stevenson Genetics sire GAR Ultimate. The dam of this heifer is by the high-selling TC Moonshine 001 with 5 WR 104.

Reference  
Sire



**G A R Ultimate**



# ROUNDUP DAUGHTERS



21AR Roundup 7005

Sire of Lots 31 - 33

## 31 DIAMOND BLACKCAP 368W

**Cow** 16414545 *birth date:* 3/2/2009 *Tattoo:* 368W  
 HARB PENDLETON 765 J H S A V FINAL ANSWER 0035  
**21AR ROUNDUP 7005** H A R B BLACK LADY 375 J H#  
 21AR BLACKBIRD LADY F645 B C C BUSHWACKER 41-93#  
 21AR BLACKBIRD LADY C645  
 SUMMITCREST DIAMOND 0K24 GARDENS PRIME TIME#  
**DIAMOND BLACKCAP 3146** SUMMITCREST GAYBIRD 3H77  
 DIAMOND BLACKCAP L509 BASIN MAX 602C#  
 DIAMOND BLACKCAP 154F

BW	<b>I-0.2</b>	WW	<b>I+59</b>	Milk	<b>I+25</b>	YW	<b>I+101</b>
----	--------------	----	-------------	------	-------------	----	--------------

◆ Herd Tag 368W *Marb* **I+.37** *RE* **I+.13** *SB* **40.96**

An exciting opportunity to acquire a heifer from the first calf crop by the \$49,000 Stevenson Genetics sire 21AR Roundup 7005 who was selected as the all-time top-selling bull of the North Dakota Bull Test. The dam of this heifer is a granddaughter of the Pathfinder Sires Gardens Prime Time and Basin Max 602C with 4 WR 101, 2 YR 111, 2 IMF 100 and 2 REA 104, while the grandam has 3 WR 101, 3 YR 103, 3 IMF 112 and 3 REA 104, and the third dam records 7 WR 110, 5 YR 108, 29 IMF 97 and 32 REA 103.

## 32 DIAMOND BLACKCAP 158W

**Cow** 16414544 *birth date:* 3/14/2009 *Tattoo:* 158W  
 HARB PENDLETON 765 J H S A V FINAL ANSWER 0035  
**21AR ROUNDUP 7005** H A R B BLACK LADY 375 J H#  
 21AR BLACKBIRD LADY F645 B C C BUSHWACKER 41-93#  
 21AR BLACKBIRD LADY C645  
 BROOKS EXT 792# N BAR EMULATION EXT#  
**DIAMOND BLACKCAP L642#** PRINCESS 4103 B C B R  
 DIAMOND BLACKCAP 154F BASIN RAINMAKER 2844#  
 BASIN BLACKCAP C S 815A

BW	<b>I-0.2</b>	WW	<b>I+59</b>	Milk	<b>I+29</b>	YW	<b>I+96</b>
----	--------------	----	-------------	------	-------------	----	-------------

◆ Herd Tag 158W *Marb* **I+.14** *RE* **I+.09** *SB* **31.26**

This heifer from the first calf crop by the \$49,000 21AR Roundup 7005 is a granddaughter of the Diamond Dot donor Diamond Blackcap 154F. The dam of this heifer records 4 WR 105, 3 YR 108, while the grandam has 7 WR 110 and 5 YR 108.

## 33 DIAMOND RACHEL W487

**Cow** 16414550 *birth date:* 3/8/2009 *Tattoo:* W487  
 HARB PENDLETON 765 J H S A V FINAL ANSWER 0035  
**21AR ROUNDUP 7005** H A R B BLACK LADY 375 J H#  
 21AR BLACKBIRD LADY F645 B C C BUSHWACKER 41-93#  
 21AR BLACKBIRD LADY C645  
 BASIN EXPEDITION 6241 GARDENS EXPEDITION#  
**DIAMOND RACHEL 137P** BASIN CHLOE 350F#  
 BASIN RACHEL 991L BASIN RAINMAKER 124H  
 BASIN RACHEL 7119

BW	<b>I-0.6</b>	WW	<b>I+55</b>	Milk	<b>I+23</b>	YW	<b>I+92</b>
----	--------------	----	-------------	------	-------------	----	-------------

◆ Herd Tag W487 *Marb* **I+.17** *RE* **I+.13** *SB* **31.97**

A paternal sister to the previous two heifers from the exciting first calf crop by the Stevenson Genetics sire 21AR Roundup 7005 who was the \$49,000 all-time top-selling bull of the North Dakota Bull Test from the first calf crop by the extreme EPD sire HARB Pendleton 765 JH. The dam of this heifer has 3 WR 101 and 3 REA 107, from the herd sire producing Rachel family.



# EVERELDA ENTENSE DONOR

Reference  
Dam



BT Everelda Entense 567H

## 34 BT EVERELDA ENTENSE 494M

Cow +14162412 birth date: 2/22/2002 Tattoo: 494M

SITZ TRAVELER 9929#

**SITZ TRAVELER 6802#**

SITZ BARBARAMERE NELLE 2988#

LEACHMAN RIGHT TIME#

**BT EVERELDA ENTENSE 567H**

SITZ EVERELDA ENTENSE 1905

D H D TRAVELER 6807#

SITZ EVERELDA ENTENSE 1137

3 BAR SPIKE 1766

SITZ BARBARAMERE NELL 305

N BAR EMULATION EXT#

LEACHMAN ERICA 0025

TRAVELER 124 G D A R#

SITZ EVERELDA ENTENSE 1791#

**BW +2.8 WW +42 Milk +19 YW +81**

Herd Tag G200 Marb +.13 RE +.00 SB 26.39

A special attraction Everelda Entense who has served her second rotation as a Stevenson donor collecting 42 viable embryos in 12 flushes. This daughter of the Pathfinder Sire Sitz Traveler 6802 is from the \$100,000 valued BT Everelda Entense 567H who records 3 WR 119, 2 YR 118, with 65 head evaluated by ultrasound. The grandam is the legendary Sitz Everelda Entense 1905 who generated more than \$1 million in progeny sales as the top-income-producing daughter of the Pathfinder Sire Traveler 124 GDAR and she recorded 5 WR 111 and 6 YR 110. The dam of this cow is a full sister to a number of other top-valued females. Stevenson In Focus 7509, a grandson of this cow, serves as a Stevenson herd sire. This cow records 4 NR 103, 2 YR 101, 13 IMF 104 and 13 REA 103. SELLS OPEN AND READY TO FLUSH.

Reference  
Dam



Sitz Everelda Entense 1905

Grandam of Lot 34





# OUTCROSS DONORS - PROVEN HIGH PRODUCTION READY TO FLUSH AI BRED

**35 STEVENSON CHLOE 0732**  
 Cow 14103567 birth date: 1/15/2002 Tattoo: 0732  
 A A R RAMBLER 356 SITZ TRAVELER 8180#  
**A A R RAMBLER 779#** A A R BONNIE 74  
 A A R BLACKBIRD 582 A A R WINDY RIDGE 1499  
 A A R BLACKBIRD 1320  
 STEVENSON ENCORE 5212 PERRIER EXT EXTRA 4048  
**STEVENSON CHLOE K663** STEVENSON ZARA 821E#  
 STEVENSON CHLOE 576F V D A R NEW TREND 123  
 JRS CHLOE 458A

BW	<b>+2.7</b>	WW	<b>+47</b>	Milk	<b>+26</b>	YW	<b>+76</b>
----	-------------	----	------------	------	------------	----	------------

□ Herd Tag G225 Marb **-0.1** RE **+1.3** SB **20.95**  
 A top production outcross donor flushed seven times for a total of 65 viable embryos including embryos selected for export to Russia. Dam 6 WR 103, Grandam 4 YR 112. This productive female records 4 NR 107, 3 YR 104, along with 3 REA 103. This female combines an impressive phenotype with an outstanding cow family in production in outcross genetics. The sire of this cow left an impressive set of daughters in the Stevenson program, reporting Darrell Stevenson, "If you are going to truly evaluate the core foundation of our current herd, the Rambler daughters would have as much prominence as any sire group. With virtually no fallout, these girls work year after year. Today they offer a nice alternative pedigree." SELLS OPEN AND READY TO FLUSH WITH TEN FROZEN EMBRYOS BY GAR ULTIMATE.

**38 DIAMOND LUCY 6013**  
 Cow +14420103 birth date: 1/14/2003 Tattoo: 6013  
 SUMMITCREST PRIME CUT 1G42# FINKS 5522-6148#  
**THREE TREES PRIME CUT 0145** SUMMITCREST BARBARA 0B74#  
 BLACK TOOTH LADY B 380# BASIN RAINMAKER 654X#  
 BEAR CLAW P P LADY 351  
 G T MAXIMUM# SCOTCH CAP#  
**BASIN LUCY 178D** GT MISS TRAVELER 58#  
 BASIN LUCY 855A# MED ROCK TRAVELER JR#  
 BASIN LUCY 340X#

BW	<b>+1.6</b>	WW	<b>+52</b>	Milk	<b>+20</b>	YW	<b>+103</b>
----	-------------	----	------------	------	------------	----	-------------

◇ Herd Tag G388 Marb **+0.25** RE **+0.33** SB **49.52**  
 A full sister to the Diamond Dot herd sire and top-seller Diamond Prime Cut N536 who sold to Deerfield Colony for \$6,500 in the 2003 Stevenson Basin Sale. The dam of this cow is a maternal sister to Basin Lucy 178E and she served as a donor selling for \$5,000 at 14 years of age with 7 NR 110, 7 YR 106 and 30 REA 106. The grandam of this cow produced the \$24,000 herd sire Basin Partner 178F and she recorded 6 NR 109 and 5 YR 113. This cow, herself, has 5 NR 102, 4 YR 108 and 4 REA 107. AI bred to the \$22,000 high selling DIAMOND MONEYMAKER U229 due to calve March 10, 2010.

**36 STEVENSON CLOVA PRIDE M967**  
 Cow 14103824 birth date: 2/24/2002 Tattoo: M967  
 A A R RAMBLER 356 SITZ TRAVELER 8180#  
**A A R RAMBLER 779#** A A R BONNIE 74  
 A A R BLACKBIRD 582 A A R WINDY RIDGE 1499  
 A A R BLACKBIRD 1320  
 BASIN MAX 602C# G T MAXIMUM#  
**STEVENSON CLOVA PRIDE 469J** BASIN ELINE ERICA 315U#  
 JRS CLOVA PRIDE 219Z BASIN EMULATION 5653#  
 J R S CLOVA PRIDE 919X#

BW	<b>+2.7</b>	WW	<b>+41</b>	Milk	<b>+20</b>	YW	<b>+76</b>
----	-------------	----	------------	------	------------	----	------------

□ Herd Tag G250 Marb **+0.06** RE **-1.13** SB **15.88**  
 A powerful deep-bodied outcross donor flushed seven times for 28 viable embryos including embryos selected for export to Russia. This proven producer currently records 5 NR 105 and 2 YR 110. This cow from the herd sire producing Clova Pride family is among the top daughters of the great female sire AAR Rambler 779 and her dam is a proven producer by the Pathfinder Sire Basin Max 602C tracing to a high-indexing grandam who recorded 7 WR 111. SELLS OPEN AND READY TO FLUSH WITH TEN FROZEN EMBRYOS BY GAR ULTIMATE.

**39 DIAMOND BLACK LADY M67**  
 Cow +15964362 birth date: 2/15/2002 Tattoo: M67  
 FINKS 5522-6148# EMULATION N BAR 5522#  
**SUMMITCREST PRIME CUT 1G42#** FINKS PROUD FORMERA 614  
 SUMMITCREST BARBARA 0B74# HYLINE NICKEL#  
 SUMMITCREST BARBARA 0X60  
 BASIN MAX 602C# G T MAXIMUM#  
**DIAMOND BLACK LADY 420H** BASIN ELINE ERICA 315U#  
 BEAR CLAW B RAINMAKER 8807# BASIN RAINMAKER 654X#  
 BEAR CLAW BLACK LADY 204

BW	<b>+0.9</b>	WW	<b>+37</b>	Milk	<b>+25</b>	YW	<b>+67</b>
----	-------------	----	------------	------	------------	----	------------

◇ Herd Tag W275 Marb **+0.58** RE **+1.14** SB **42.49**  
 This outcross female records 3 NR 107, 3 YR 103, 3 IMF 112 and 3 REA 107. The maternal grandam of this cow served as a donor cow with 8 NR 109, 3 YR 108, 7 IMF 112 and 7 REA 103, and had nine sons who all served as herd sires in registered breeding programs. A daughter of this cow is featured as Lot 71. AI bred to 21AR BIG SPREAD 7012A due to calve March 10, 2010.

**37 STEVENSON JANNET 6982**  
 Cow 14140299 birth date: 3/15/2002 Tattoo: 6982  
 SITZ ALLIANCE 6595# SITZ TRAVELER 8180#  
**PAWS UP ALLIANCE 9561** SITZ BARBARAMERE JET 2698#  
 SITZ EVERELDA ENTENSE 023 TRAVELER 124 G D A R#  
 SITZ EVERELDA ENTENSE 1137  
 STEVENSON NUGGET 328C NUGGET 801X OF J R S  
**STEVENSON JANNET S72F** J R S CLOVA PRIDE 942Y  
 STEVENSON JANNET 558D BLACK TOOTH RAINMAKER 911  
 JRS GREYSTONE JANNET 398A

BW	<b>+2.9</b>	WW	<b>+46</b>	Milk	<b>+27</b>	YW	<b>+85</b>
----	-------------	----	------------	------	------------	----	------------

□ Herd Tag R228 Marb **+1.14** RE **+0.07** SB **32.72**  
 A very attractive thick-made outcross donor flushed seven times for 37 viable embryos including embryos selected for export to Russia. This productive female records 5 NR 105, 3 YR 103, 3 IMF 103 and 3 REA 110. This outcross female also earned individual WR 119 and individual YR 114. SELLS OPEN AND READY TO FLUSH WITH TEN FROZEN EMBRYOS BY GAR ULTIMATE.

**40 DIAMOND ERICA 2979**  
 Cow 14680986 birth date: 2/7/2002 Tattoo: 2979  
 VERMILION DATELINE 7078# CONNEALY DATELINE#  
**VERMILION PAYWEIGHT J847#** VERMILION BLACKBIRD 5044#  
 VERMILION LASS 7969 TOP SECRET 9757 E A R  
 VERMILION 155 LASS 2046  
 RITO 2X 739 E A R TRANSFORMER 100 E A R#  
**R&S ERICA 6819** 2100 BLACKBIRD 39  
 R&S ERICA 4206 MAXIMUM 873A OF JRS  
 J R ERICA 334D

BW	<b>+2.9</b>	WW	<b>+54</b>	Milk	<b>+21</b>	YW	<b>+92</b>
----	-------------	----	------------	------	------------	----	------------

◇ Herd Tag W223 Marb **+1.13** RE **+0.37** SB **40.44**  
 The 2009 calf from this cow sired by Justice is featured as Lot 407 as the seventh calf to sell in the 2009 sale. This daughter of the high-performance Pathfinder Sire Vermilion Payweight J847 has 6 NR 101, 4 YR 100, 4 IMF 120 and 4 REA 105. AI bred to MYTTY IN FOCUS due to calve January 30, 2010.



## 41 STEVENSON RAMBLER U252

Cow 16112485 birth date: 1/22/2008 Tattoo: U252  
 RAFTER S RONAN TEX 20K RONAN TEX 10X  
**F V 20K KING 308M** GLENNIE PRIDE 69E  
 QUEEN 362E TARAUS JAZMAN 59Y  
 QUEEN L4 587U  
 A A R RAMBLER 779# A A R RAMBLER 356  
**STEVENSON RAMBLER M987#** A A R BLACKBIRD 582  
 STEVENSON ESTELLA 7469 STEVENSON MAXIMUM 42C  
 STEVENSON ESTELLA 5827

BW **+4.7** WW **+50** Milk **+21** YW **+86**

□ Herd Tag U252 Marb **+0.07** RE **-0.11** \$B **27.91**

Possibly the most powerful heifer in the offering, offering massive rib and body depth with an attractive profile. This outcross female by the Canadian-bred sire FV 20K King 308M is from the herd sire producing Estella family tracing to the legendary Pathfinder Dam Ahlgrens Estella 2758 ETE. This female earned WR 110 and YR 111 from a dam with 6 WR 107 and 4 YR 104. The grandam records 6 WR 102 and 6 YR 102, while the third dam records 8 WR 103 and 4 YR 102. Confirmed AI bred to 21AR ROUNDUP 7005 due to calve January 27, 2010.

## 42 STEVENSON QUEEN MOTHER U179

Cow 16112849 birth date: 2/28/2008 Tattoo: U179  
 CAR DUKE 104# CAR TRACKER 904#  
**STEVENSON DUKE 4186** C A R MISS RAINDANCER 421#  
 STEVENSON VIXON P298 C A FUTURE DIRECTION 5321#  
 STEVENSON VIXON 62M8  
 VDAR AMBUSH 2478 V D A R AMBUSH 1465 S A F#  
**STEVENSON QUEEN MOTHER 881L** V D A R POLLY 814#  
 STEVENSON QUEEN MOTHER 5638 HUGHES FARMS ELLJAH  
 STEVENSON QUEEN MOTHER 618E

BW **+4.9** WW **+64** Milk **+30** YW **+107**

□ Herd Tag U179 Marb **+0.15** RE **+0.31** \$B **47.93**

A big time performance and power female with outcross genetics. This heifer recorded WR 114 and YR 118 combined with REA 116. This heifer is backed by a great cow family production record by a dam with 7 WR 105 and 6 YR 103, descending from a grandam with 3 WR 108 and 3 YR 106, tracing to a third dam with 5 WR 103 and 5 YR 102. The sire of this heifer contributes a dominating +75 WW EPD and +124 YW EPD with progeny data. Confirmed AI bred to 21AR ROUNDUP 7005 due to calve January 23, 2010.

## 43 DIAMOND MONEYSMAKER 4038

Cow 16017063 birth date: 2/11/2008 Tattoo: 4038  
 BOYD ON TARGET 1083 S A F 598 BANDO 5175#  
**STEVENSON MONEYSMAKER R185** BOYD FOREVER LADY 7095  
 STEVENSON CLOVA PRIDE L888# VDAR AMBUSH 2478  
 STEVENSON CLOVA PRIDE 712H  
 BASIN PAYWEIGHT 724M VERMILION PAYWEIGHT J847#  
**DIAMOND BLACKCAP LADY 4183** BASIN LUCY 584G#  
 BASIN BLACKCAP LADY 930L BASIN MAX 171H  
 BASIN BLACKCAP LADY J185

BW **+1.9** WW **+52** Milk **+25** YW **+101**

◇ Herd Tag 4038 Marb **+0.31** RE **+0.11** \$B **39.59**

A tremendous high-performance heifer by the high-valued Stevenson MoneyMaker R185 recording YR 110 combined with REA 109. This heifer stems from a long line of proven females from the Blackcap Lady family tracing to a grandam who records 5 WR 105 and 5 YR 107 combined with 5 IMF 111. AI bred to 21AR ROUNDUP 7005 due to calve January 25, 2010.

## 44 DIAMOND TROJAN ERICA 8673

Cow 16104571 birth date: 1/24/2008 Tattoo: 8673  
 BOYD ON TARGET 1083 S A F 598 BANDO 5175#  
**STEVENSON MONEYSMAKER R185** BOYD FOREVER LADY 7095  
 STEVENSON CLOVA PRIDE L888# VDAR AMBUSH 2478  
 STEVENSON CLOVA PRIDE 712H  
 DIAMOND DATELINE 4149 BASIN DATELINE 752L  
**DIAMOND TROJAN ERICA 3186** DIAMOND BLACK LADY 6781  
 DIAMOND TROJAN ERICA 146N DIAMOND AMBUSH 866K  
 DIAMOND TROJAN ERICA 941L

BW **+2.6** WW **+63** Milk **+26** YW **+105**

◇ Herd Tag 8673 Marb **+0.37** RE **+0.09** \$B **46.70**

A two-year-old first calf heifer by the high-valued Stevenson MoneyMaker R185 from the herd sire producing Trojan Erica family. This female recorded BR 97, WR 114, YR 107 and ranks in the top 1% for WW, the top 3% for YW. This cow was produced as her dam's first calf in the AHIR program tracing to a grandam who records 5 WR 107, 4 WR 105, 4 IMF 119 and 4 REA 109, while stemming from a third dam with 7 WR 103, 6 YR 104, 6 IMF 111 and 6 REA 101. AI bred to CONNEALY THUNDER due to calve February 14, 2010.



# LUCY BRED HEIFERS



**45**

## DIAMOND LUCY U785

Cow +16136756 birth date: 3/16/2008 Tattoo: U785  
 BASIN MAX 602C# G T MAXIMUM#  
**21AR COAL BANK C014** BASIN ELINE ERICA 315U#  
 LEACHMAN LASS 5014# N BAR EMULATION EXT#  
 LEACHMAN LASS 3056  
 BASIN EXTRA 740 218G N BAR EMULATION EXT#  
**DIAMOND LUCY 419L#** BASIN ELMARETTA 1377#  
 BASIN LUCY 178D G T MAXIMUM#  
 BASIN LUCY 855A#

**46**

## DIAMOND LUCY U782

Cow +16136753 birth date: 3/10/2008 Tattoo: U782  
 BASIN MAX 602C# G T MAXIMUM#  
**21AR COAL BANK C014** BASIN ELINE ERICA 315U#  
 LEACHMAN LASS 5014# N BAR EMULATION EXT#  
 LEACHMAN LASS 3056  
 BASIN EXTRA 740 218G N BAR EMULATION EXT#  
**DIAMOND LUCY 419L#** BASIN ELMARETTA 1377#  
 BASIN LUCY 178D G T MAXIMUM#  
 BASIN LUCY 855A#

BW	<b>I+1.8</b>	WW	<b>I+55</b>	Milk	<b>I+13</b>	YW	<b>I+100</b>
----	--------------	----	-------------	------	-------------	----	--------------

◇ Herd Tag U785 Marb **+0.24** RE **+0.10** \$B **43.21**  
 The first of a pair of flush sisters from the Lucy family by the proven calving-ease sire 21AR Coal Bank C014. This low-birth weight heifer ranks in the top 5% for YW and in the top 10% for WW, from a donor dam with 4 WR 109, 4 YR 108, 66 IMF 102 and 66 REA 100. This heifer is a maternal sister to an outstanding flush of bulls sold last fall including the \$22,000 Diamond Moneymaker U229 selected by Mike Conell and the light birth weight Diamond Royal Flush 53U2 selected by Randy Schurring. The grandam is a former donor who sold for \$5,000 as a 14-year-old cow and she is a maternal sister to Basin Lucy 178E. This heifer records IMF 108 and RE 106. AI bred to CONNEALY THUNDER due to calve January 28, 2010.

BW	<b>I+1.8</b>	WW	<b>I+55</b>	Milk	<b>I+13</b>	YW	<b>I+100</b>
----	--------------	----	-------------	------	-------------	----	--------------

◇ Herd Tag U782 Marb **+0.17** RE **+0.15** \$B **40.85**  
 A flush sister to the previous heifer and a maternal sister to an outstanding flush of bulls that sold last fall including the \$22,000 Diamond Moneymaker U229 selected by Mike Conell and the light birth weight Diamond Royal Flush 53U2 selected by Randy Schurring. This heifer ranks in the top 5% for YW and the top 10% for WW with an RE of 113 from a donor dam with 4 WR 109, 4 YR 108, 66 IMF 102 and 66 RE 100. The grandam records 7 WR 110 and 7 YR 106, while the third dam has 6 WR 109 and 5 YR 113. AI bred to 21AR ROUNDUP 7005 due to calve January 28, 2010.

Reference  
Sire



**Diamond Moneymaker U229**

\$220,000 Maternal Brother to LOTS 45 and 46

Reference  
Sire



**Diamond Royal Flush 53U2**

Herd Bull and Maternal Brother to LOTS 45 and 46



Diamond Justice 901S

Sire of Lots 31 - 33

**47** **DIAMOND BLACKCAP U549**

Cow 16110428 birth date: 2/28/2008 Tattoo: U549  
 ER JUSTICE N013 ER FALCON K177#  
**DIAMOND JUSTICE 901S** JR HENRIETTA 001L  
 ERISKAY OF ER J238# E R KNIGHT 529  
 ERISKAY OF R R 1448  
 VERMILION PAYWEIGHT J847# VERMILION DATELINE 7078#  
**DIAMOND BLACKCAP 154R** VERMILION LASS 7969  
 DIAMOND BLACKCAP 4641 BROOKS EXT 792#  
 DIAMOND BLACKCAP 154F

BW	<b>-1.0</b>	WW	<b>+55</b>	Milk	<b>+27</b>	YW	<b>+98</b>
----	-------------	----	------------	------	------------	----	------------

◇ Herd Tag U549 Marb **+44** RE **+26** SB **47.82**

A royally-bred female sired by Diamond Justice 901S from the productive and proven Blackcap family. This heifer records BR 87, WR 107, YR 105, IMF 134 and REA 114, from a dam with 2 BR 99, 2 WR 112, 2 YR 111, 2 IMF 115 and 2 REA 109. The grandam has 7 WR 110 and 5 YR 108, and the third dam is one of four full sisters that served as donor cows including the dam of the \$13,000 Diamond Payload 982S, from the family that also produced Diamond Rainmaker 154E, the \$12,000 Diamond Dateline 5072, the \$12,500 Diamond Direct Deposit and the \$18,000 Basin Diamond Max 815D. AI bred to CONNEALY THUNDER due to calve January 29, 2010.



**48** **DIAMOND LADY U534**

Cow 16010909 birth date: 1/20/2008 Tattoo: U534  
 ER JUSTICE N013 ER FALCON K177#  
**DIAMOND JUSTICE 901S** JR HENRIETTA 001L  
 ERISKAY OF ER J238# E R KNIGHT 529  
 ERISKAY OF R R 1448  
 VERMILION PAYWEIGHT J847# VERMILION DATELINE 7078#  
**DIAMOND LADY 544S** VERMILION LASS 7969  
 BASIN LADY 734J BASIN MAX 602C#  
 BASIN LADY 2477

BW	<b>-1.3</b>	WW	<b>+57</b>	Milk	<b>+21</b>	YW	<b>+101</b>
----	-------------	----	------------	------	------------	----	-------------

◇ Herd Tag U534 Marb **+35** RE **+37** SB **49.36**

An elite outcross female with BR 82, WR 106, YR 104, IMF 116 and REA 121, to rank in the lowest 2% for BW, the top 5% for both WW and YW, sired by Diamond Justice 901S from a dam backed by the Pathfinder Sires Vermilion Payweight J847 and Basin Max 602C. The grandam of this heifer served as a donor with 4 BR 92, 4 WR 106 and 3 YR 108. AI bred to SAV BISMARCK 5682 due to calve January 26, 2010.

**49** **DIAMOND BLACKCAP U506**

Cow 16010905 birth date: 1/19/2008 Tattoo: U506  
 ER JUSTICE N013 ER FALCON K177#  
**DIAMOND JUSTICE 901S** JR HENRIETTA 001L  
 ERISKAY OF ER J238# E R KNIGHT 529  
 ERISKAY OF R R 1448  
 VERMILION PAYWEIGHT J847# VERMILION DATELINE 7078#  
**DIAMOND BLACKCAP R533** VERMILION LASS 7969  
 DIAMOND BLACKCAP G283 BASIN RAINMAKER 2844#  
 BASIN BLACKCAP C S 815A

BW	<b>+0.0</b>	WW	<b>+51</b>	Milk	<b>+24</b>	YW	<b>+91</b>
----	-------------	----	------------	------	------------	----	------------

◇ Herd Tag U506 Marb **+32** RE **+22** SB **38.68**

The result of the successful blending of Diamond Justice 901S with Vermilion Payweight J847 recording a combination of BR 91 with REA 103, to rank in the lowest 10% for BW while ranking in the top 20% for both WW and YW. The dam of this heifer is a full sister to Diamond Payload 982S who sold for \$13,000 to R&S Angus and Gary Wall and was a member of a flush of 16 bulls that sold for an average of \$6,422. Bred to DIAMOND IMAGE MAKER 32U9 due to calve late March, 2010.





**50**

**STEVENSON EMILY R240U**

Cow 16112964 birth date: 2/9/2008 Tattoo: R240U  
 C A FUTURE DIRECTION 5321# G A R PRECISION 1680#  
**STEVENSON CE DELUXE 1914** C A MISS POWER FIX 308  
 FSHK PRIDE 180# SITZ ALLIANCE 6595#  
 FSHK PRIDE 725  
 VERMILION YELLOWSTONE# VERMILION DATELINE 7078#  
**STEVENSON EMILY 9394#** VERMILION B JESTRESS 3912  
 STEVENSON EMILY 7839 STEVENSON RAINMAKER 544G  
 STEVENSON EMILY D45G#

BW **+2.0** WW **+57** Milk **+28** YW **+107**

☐ Herd Tag R240U Marb **+59** RE **+22** SB **55.68**

A powerful female with a great balance of performance EPDs and carcass backed by a great cow family with solid production records. This heifer has WR 108, YR 114, IMF 101 and REA 107, from a dam with 3 WR 105, 3 YR 107 and 3 REA 109. The grandam records 5 WR 106 and the third dam records 8 WR 107. Confirmed AI bred to GAR ULTIMATE due to calve January 27, 2010.

**51**

**STEVENSON LASS 665U**

Cow 16112691 birth date: 2/5/2008 Tattoo: 665U  
 C A FUTURE DIRECTION 5321# G A R PRECISION 1680#  
**STEVENSON CE DELUXE 1914** C A MISS POWER FIX 308  
 FSHK PRIDE 180# SITZ ALLIANCE 6595#  
 FSHK PRIDE 725  
 STEVENSON ON TARGET H41P BOYD ON TARGET 1083  
**STEVENSON LASS 2816** STEVENSON ENCHANTRESS H30H  
 STEVENSON LASS 902M# STEVENSON EXPEDITION 7389  
 STEVENSON LASS 204J#

BW **+3.6** WW **+60** Milk **+28** YW **+105**

☐ Herd Tag 665U Marb **+51** RE **+18** SB **53.03**

A high-indexing daughter of Stevenson CE Deluxe 1914 with WR 114, and YR 109 combined with REA 110 as her dam's first calf. This high-growth female has strong individual EPD rankings backed by a solid three generation cow family production with her grandam recording 5 WR 104 and third dam recording 6 WR 105. Confirmed AI bred to the featured ABS Global calving-ease sire DIAMOND ON TRACK 748R due to calve January 27, 2010.

Reference  
Sire



**Stevenson CE Deluxe 1914**



**52 DIAMOND ENCHANTRESS 188U**

Cow +16018633 birth date: 2/23/2008 Tattoo: 188U  
 C A FUTURE DIRECTION 5321# G A R PRECISION 1680#  
**STEVENSON CE DELUXE 1914** C A MISS POWER FIX 308  
 FSHK PRIDE 180# SITZ ALLIANCE 6595#  
 FSHK PRIDE 725  
 GARDENS EXPEDITION# N BAR EMULATION EXT#  
**DIAMOND ENCHANTRESS N616** GREEN GARDEN GINA 2268 S2  
 DIAMOND ENCHANTRESS 424F# BASIN RAINMAKER 814Z#  
 DIAMOND ENCHANTRESS 1D

BW	<b>-0.7</b>	WW	<b>+46</b>	Milk	<b>+29</b>	YW	<b>+91</b>
----	-------------	----	------------	------	------------	----	------------

◆ Herd Tag 188U Marb **+0.80** RE **+0.16** SB **53.52**

A maternal sister to the \$14,500 high seller Diamond Benchmark 3R65 selected by KCS Angus. The dam was a high selling donor in the 2007 Stevenson Basin Sale selected by KCS Angus for \$7,500, and she records 3 WR 103, 3 YR 101 and 9 IMF 120 combined with 9 REA 104. The grandam is a former donor with 5 WR 111 and 3 YR 103, appearing in many Diamond Dot pedigrees. This heifer has WR 103 and YR 101 combined with IMF 126. AI bred to 21AR BIG SPREAD 7012A due to calve January 28, 2010. (The first 23 Big Spread calves have an average nursing ratio of 105.)

**53 DIAMOND ERICA LASS U598**

Cow 16016487 birth date: 2/6/2008 Tattoo: U598  
 C A FUTURE DIRECTION 5321# G A R PRECISION 1680#  
**STEVENSON CE DELUXE 1914** C A MISS POWER FIX 308  
 FSHK PRIDE 180# SITZ ALLIANCE 6595#  
 FSHK PRIDE 725  
 MEADOWS ALIGNMENT 3852 VERMILION DATELINE 7078#  
**DIAMOND ERICA LASS 5947** MEADOWS SUZANDRA SPAN H385  
 R&S ERICA LASS 5579 R&S CHAIRMAN 625  
 R&S ERICA LASS 745

BW	<b>+2.5</b>	WW	<b>+58</b>	Milk	<b>+27</b>	YW	<b>+100</b>
----	-------------	----	------------	------	------------	----	-------------

◆ Herd Tag U598 Marb **+0.56** RE **+0.25** SB **57.47**

This high-performing daughter of Stevenson CE Deluxe 1914 records WR 114 and YR 108 combined with IMF 107, ranking her in the top 4% for WW and the top 5% for YW, with a SB in the top 10%. The dam of this heifer has 2 WR 106 and 2 YR 104 combined with 2 IMF 102 and 2 REA 100. The grandam records 2 WR 106 and the third dam has 11 WR 102. AI bred to 21AR ROUNDUP 7005 due to calve January 26, 2010.

Reference  
Dam



**Diamond Enchantress N616**

Dam of Lot 52

Reference  
Sire



**Diamond Benchmark 3R65**

Maternal Brother to Lot 52





**54** **DIAMOND BLACK LADY 5U21**

Cow 16400113 birth date: 3/2/2008 Tattoo: 5U21  
 H A IMAGE MAKER 0415# HERO 6267 OF R R 2418#  
**HA IMAGE MAKER 6550** H A RITO BLACKCAP 9038  
 HA RITO LADY 3515 BR MIDLAND#  
 H A 4167 LADY 1017  
 DIAMOND PAYWEIGHT 907N VERMILION PAYWEIGHT J847#  
**DIAMOND BLACK LADY R398** DIAMOND PRIDE 617J  
 DIAMOND BLACK LADY 816N SUMMITCREST DIAMOND 0K24  
 DIAMOND BLACK LADY 518H

BW **+2.8** WW **+61** Milk **+27** YW **+103**

◇ Herd Tag 5U21 Marb **+0.34** RE **+0.29** SB **49.15**

A special attraction female by HA Image Maker 6550 from a dam with an outstanding production record slated as a possible future donor with 2 WR 117, 2 YR 120, 2 IMF 133 and 2 REA 118. This heifer records WR 118 and YR 120 combined with IMF 105 and REA 125, to rank her in the upper percentiles. AI bred to CONNEALY THUNDER due to calve February 4, 2010.



**55** **DIAMOND ENCHANTRESS 8628**

Cow 16104369 birth date: 2/12/2008 Tattoo: 8628  
 H A IMAGE MAKER 0415# HERO 6267 OF R R 2418#  
**HA IMAGE MAKER 6550** H A RITO BLACKCAP 9038  
 HA RITO LADY 3515 BR MIDLAND#  
 H A 4167 LADY 1017  
 DIAMOND MAX 973P BASIN MAX 602C#  
**DIAMOND ENCHANTRESS 6470** DIAMOND BLACKCAP 747J  
 DIAMOND ENCHANTRESS 6364 VERMILION YELLOWSTONE#  
 DIAMOND ENCHANTRESS 424F#

BW **+1.9** WW **+60** Milk **+26** YW **+95**

◇ Herd Tag 8628 Marb **+0.33** RE **+0.26** SB **45.31**

This daughter of HA Image Maker 6550 records WR 115 and YR 106 combined with IMF 107 and REA 115 as her dam's first calf. This heifer ranks in the top 2% for WW and in the top 15% for YW. The maternal grandam is a former donor who also appears in the pedigree of Lot 2 as well as Diamond Benchmark 3R65. AI bred to CONNEALY THUNDER due to calve January 28, 2010.

Reference  
Sire



**HA Image Maker 6550**

Sire of Lots 54 and 55

Reference  
Sire



**Connealy Thunder**

Service Sire of Lots 54 and 55





**56**

**STEVENSON ZARA 540U**

Cow 16112840 birth date: 2/25/2008 Tattoo: 540U  
 BOYD ON TARGET 1083 S A F 598 BANDO 5175#  
**STEVENSON SHOTFIRE S903** BOYD FOREVER LADY 7095  
 STEVENSON CLOVA PRIDE 7479 GARDENS EXPEDITION#  
 STEVENSON CLOVA PRIDE 404G  
 VERMILION YELLOWSTONE# VERMILION DATELINE 7078#  
**STEVENSON ZARA 5808** VERMILION B JESTRESS 3912  
 STEVENSON ZARA 4983# Q A S TRAVELER 23-4#  
 J R S ZARA 448T

BW	<b>+1.9</b>	WW	<b>+48</b>	Milk	<b>+22</b>	YW	<b>+96</b>
----	-------------	----	------------	------	------------	----	------------

Herd Tag 540U Marb **+0.54** RE **+0.13** SB **48.27**

A very attractive female from the Zara family with excellent individual performance recording WR 104 and YR 111 combined with IMF 120 and REA 109 to rank in the top 10% for YW. This heifer is backed by great cow family production for both performance and carcass with her dam recording 2 WR 106, 2 YR 109, 2 IMF 126, 2 REA 103, descending from a grandam with 6 WR 112, 4 YR 106, 26 IMF 106 and 26 REA 100, tracing to a third dam with 8 WR 106 and 7 YR 102. Confirmed AI bred to STEVENSON HERO I216U due to calve January 29, 2010.

**57**

**STEVENSON EOLA I810U**

Cow +16114108 birth date: 1/25/2008 Tattoo: I810U  
 B C MARATHON 7022 O C C KIRBY 633K  
**BC 7022 RAVEN 7965** GIBBET HILL MIGNONNE E37  
 O C C BONANZA 880B#  
 O C C BLACKBIRD 779A  
 O C C BLACKBIRD 796F  
 B/R NEW DESIGN 036#  
**STEVENSON EOLA N905** BON VIEW PRIDE 664  
 STEVENSON EXPEDITION 7619 GARDENS EXPEDITION#  
 3210 EOLA 487

BW	<b>+2.3</b>	WW	<b>+44</b>	Milk	<b>+24</b>	YW	<b>+81</b>
----	-------------	----	------------	------	------------	----	------------

Herd Tag I810U Marb **+0.61** RE **+0.30** SB **48.98**

An attractive daughter of the high Ribeye Area EPD sire BC 7022 Raven 7965 from a top carcass family. The dam of this heifer is a full sister to the \$84,000 top-selling female of the 2006 sale who ranked as the #1 Marbling EPD non-parent female of the Angus breed. This heifer records IMF 110 and REA 103 while her donor dam has 17 IMF 112 and 17 REA 102, and her grandam records 4 IMF 156 and 4 REA 104. Confirmed AI bred to 21AR ROUNDUP 7005 due to calve January 24, 2010.





# DAUGHTER OF CLOVA PRIDE L901

Reference  
Dam



Stevenson Clova Pride L901

\$540,000 income producing Dam of LOT 58

## 58 STEVENSON CLOVA PRIDE 6248

Cow +16122615 birth date: 2/12/2008 Tattoo: 6248  
 SITZ TRAVELER 8180# G D A R TRAVELER 71#  
**SAV 8180 TRAVELER 004#** SITZ EVERELDA ENTENSE 1137  
 BOYD FOREVER LADY 8003 A A R NEW TREND#  
 S V F FOREVER LADY 57D  
 ROCKN D AMBUSH 1531# PARAMONT AMBUSH 2172#  
**STEVENSON CLOVA PRIDE L901** MS BLACKCAP BAND OF R D 1301  
 STEVENSON CLOVA PRIDE 7229 GARDENS EXPEDITION#  
 STEVENSON CLOVA PRIDE 4177

BW **+2.4** WW **+52** Milk **+22** YW **+92**

□ Herd Tag 6248 Marb **+0.33** RE **+0.07** SB **40.66**

A maternal sister to the popular Clova Pride sisters that topped the 2008 sale including the \$32,000 top-selling bred heifer to Express and Deer Valley, the \$28,000 second top-selling bred heifer to Cox Ranches and the \$26,000 third top-selling bred heifer to Cox Ranches.

This heifer is also a maternal sister to a long line of other top-selling bulls and females from the top-income-producing donor in the Stevenson program with more than \$540,000 in progeny sales to date. This heifer is by the Pathfinder Sire SAV 8180 Traveler 004 ranking in the top 10% for YW from a dam with 2 WR 123, 1 YR 135 and 143 IMF 101. Confirmed AI bred to 21AR ROUNDUP 7005 due to calve January 24, 2010.

Reference  
Female



Stevenson Clova Pride 80T7

\$28,000 valued Maternal Sister to LOT 58

Reference  
Female



Stevenson Clova Pride 15T7

\$32,000 valued Maternal Sister to LOT 58

Reference  
Female



Stevenson Clova Pride 02T9

\$26,000 valued Maternal Sister to LOT 58

Reference  
Female



Stevenson Clova Pride 5922

\$32,500 top selling heifer from the 2006 NWSS Foundation Female Sale

# TROJAN ERICA BRED HEIFERS



## 59 DIAMOND TROJAN ERICA 8096

Cow +16015070 birth date: 2/25/2008 Tattoo: 8096  
 BON VIEW NEW DESIGN 1407# B/R NEW DESIGN 036#  
**EXAR 263C** BON VIEW PRIDE 664  
 EXAR JUNE C 3577 BR MIDLAND#  
 PAF 9611 616 1161  
 BASIN MAX 602C#  
**DIAMOND TROJAN ERICA 924L** G T MAXIMUM#  
 DIAMOND TROJAN ERICA 777J BASIN ELINE ERICA 315U#  
 DIAMOND RAINMAKER 154E#  
 DIAMOND TROJAN ERICA 160G

**BW +3.1 WW +55 Milk +21 YW +106**

◇ Herd Tag 8096 Marb +.57 RE +.32 SB 56.86

This daughter of the \$263,000 EXAR 263C records WR 112 and YR 111 combined with REA 118, ranking her in the top 2% for YW and the top 10% for both WW and SB. The donor dam of this female has 4 WR 107, 4 YR 102, 65 IMF 107 and 65 REA 104. The grandam of this heifer also served as a donor recording 6 NR 103. AI bred to the ABS Global sire DIAMOND ON TRACK due to calve January 27, 2010.



## 60 DIAMOND TROJAN ERICA 4118

Cow +15994916 birth date: 1/13/2008 Tattoo: 4118  
 BON VIEW NEW DESIGN 1407# B/R NEW DESIGN 036#  
**EXAR 263C** BON VIEW PRIDE 664  
 EXAR JUNE C 3577 BR MIDLAND#  
 PAF 9611 616 1161  
 BASIN MAX 602C#  
**DIAMOND TROJAN ERICA 924L** G T MAXIMUM#  
 DIAMOND TROJAN ERICA 777J BASIN ELINE ERICA 315U#  
 DIAMOND RAINMAKER 154E#  
 DIAMOND TROJAN ERICA 160G

**BW +2.3 WW +51 Milk +21 YW +101**

◇ Herd Tag 4118 Marb +.43 RE +.17 SB 48.41

A full sister to the previous heifer from an embryo mating produced from the most influential cow in the Diamond Dot program recording 4 WR 107 and 4 YR 102 combined with 65 IMF 107 and 65 REA 104. This heifer has four maternal sisters serving as donors and five sons utilized as herd sires in the Diamond Dot program. This heifer records WR 106 and YR 105. AI bred to GAR ULTIMATE due to calve January 28, 2010.

Reference  
Dam



## 61 DIAMOND TROJAN ERICA U795

Cow +16136775 birth date: 3/11/2008 Tattoo: U795  
 BON VIEW NEW DESIGN 1407# B/R NEW DESIGN 036#  
**EXAR 263C** BON VIEW PRIDE 664  
 EXAR JUNE C 3577 BR MIDLAND#  
 PAF 9611 616 1161  
 C A FUTURE DIRECTION 5321#  
**DIAMOND TROJAN ERICA 67P** G A R PRECISION 1680#  
 DIAMOND TROJAN ERICA 924L C A MISS POWER FIX 308  
 DIAMOND TROJAN ERICA 777J BASIN MAX 602C#  
 DIAMOND TROJAN ERICA 160G

**BW I+0.9 WW I+45 Milk I+25 YW I+89**

◇ Herd Tag U795 Marb +.79 RE +.31 SB 58.52

This daughter of the \$263,000 EXAR 263C is from a third generation Diamond Dot donor who records 26 IMF 108 and 26 REA 102. This heifer has an individual IMF ratio of 127. AI bred to 21AR ROUNDUP 7005 due to calve February 14, 2010.







**62 STEVENSON ENCHANTRESS U495**

Cow 16112768 birth date: 2/15/2008 Tattoo: U495  
 RAFTER S RONAN TEX 20K RONAN TEX 10X  
**F V 20K KING 308M** GLENNIE PRIDE 69E  
 QUEEN 362E TARAUS JAZMAN 59Y  
 QUEEN L4 587U  
 STEVENSON SALUTE ROCKN D AMBUSH 1531#  
**STEVENSON ENCHANTRESS P906** STEVENSON MISS BLIZZARD 6759  
 STEVENSON ENCHANTRESS 449J# FRONTIER 627C OF MILL BRAE  
 STEVENSON ENCHANTRESS 4996

BW	<b>+2.5</b>	WW	<b>+52</b>	Milk	<b>+20</b>	YW	<b>+90</b>
----	-------------	----	------------	------	------------	----	------------

□ Herd Tag U495 Marb **+0.26** RE **-0.02** \$B **39.55**

An outcross female by the Canadian-bred FV 20K King 308M with WR 105 and YR 106 combined with IMF 105. This heifer is backed by great cow family production records descending from a second and third dam who both served as donor cows. This heifer records WR 105, YR 106 and IMF 105, from a dam with 3 BR 97, 3 WR 107 and 2 YR 109, and she is in turn a maternal sister to the current Stevenson herd sire Stevenson In Focus 2T10. The grandam has 8 WR 103, 5 YR 106, 11 IMF 107 and 11 REA 102. This heifer ranks in the top 15% for both WW and YW. Confirmed AI bred to 21AR ROUNDUP 7005 due to calve January 24, 2010.

**63 STEVENSON ELINE ERIC 0658**

Cow 16112782 birth date: 2/16/2008 Tattoo: 0658  
 RAFTER S RONAN TEX 20K RONAN TEX 10X  
**F V 20K KING 308M** GLENNIE PRIDE 69E  
 QUEEN 362E TARAUS JAZMAN 59Y  
 QUEEN L4 587U  
 STEVENSON ENCORE 5217 PERRIER EXT EXTRA 4048  
**STEVENSON ELINE ERICA 5700** STEVENSON ZARA 821E#  
 STEVENSON ELINE ERICA 603E STEVENSON NUGGET 328C  
 JRS ELINE ERICA 960B#

BW	<b>+5.5</b>	WW	<b>+47</b>	Milk	<b>+16</b>	YW	<b>+85</b>
----	-------------	----	------------	------	------------	----	------------

□ Herd Tag 0658 Marb **+0.05** RE **+0.08** \$B **30.02**

This daughter of the Canadian outcross sire FV 20K King 308M records WR 103 and YR 107 combined with REA 103. The solid production record of the Eline Erica family stems from a dam with 7 WR 107, 7 YR 103 and 7 REA 104. Confirmed AI bred to 21AR ROUNDUP 7005 due to calve January 27, 2010.

**64 STEVENSON QUEEN MOTHER U054**

Cow 16112825 birth date: 2/22/2008 Tattoo: U054  
 RAFTER S RONAN TEX 20K RONAN TEX 10X  
**F V 20K KING 308M** GLENNIE PRIDE 69E  
 QUEEN 362E TARAUS JAZMAN 59Y  
 QUEEN L4 587U  
 R&S BUZZ 2738 STEVENSON BUZZ 831F  
**STEVENSON QUEEN MOTHER 7570#** BASIN PRIDE B28#  
 STEVENSON QUEEN MOTHER 4317# J R SLEEP EASY 042E  
 STEVENSON QUEEN MOTHER 246D

BW	<b>+5.9</b>	WW	<b>+47</b>	Milk	<b>+19</b>	YW	<b>+76</b>
----	-------------	----	------------	------	------------	----	------------

□ Herd Tag U054 Marb **+0.29** RE **-0.04** \$B **34.19**

This daughter of the Canadian outcross sire FV 20K King 308M has WR 103 and YR 105 combined with IMF 111 and REA 105. The dam and grandam are both long-time high production females with the dam recording 10 WR 104 and 7 YR 102. Confirmed AI bred to 21AR ROUNDUP 7005 due to calve January 23, 2010.



**65 DIAMOND JANNET 490U**

Cow 16017064 birth date: 2/14/2008 Tattoo: 490U  
 BOYD ON TARGET 1083 S A F 598 BANDO 5175#  
**STEVENSON MONEYMAKER R185** BOYD FOREVER LADY 7095  
 STEVENSON CLOVA PRIDE L888# VDAR AMBUSH 2478  
 STEVENSON CLOVA PRIDE 712H  
 BR MIDLAND# TWIN VALLEY PRECISION E161#  
**DIAMOND JANNET 554** BR ROYAL LASS 7036-19  
 BASIN GREYSTONE JANNET 3519 SCHURRTOP SUPREME#  
 BASIN GREYSTONE JANNET 6779

BW	<b>+2.1</b>	WW	<b>+50</b>	Milk	<b>+22</b>	YW	<b>+96</b>
----	-------------	----	------------	------	------------	----	------------

◇ Herd Tag 490U Marb **+0.42** RE **+0.25** \$B **45.66**

A daughter of the high-valued Stevenson Moneymaker R185 from a dam by the \$202,000 BR Midland. This heifer combines BR 97 with YR 105, IMF 112 and REA 114. The high-indexing grandam records 3 WR 115 and 3 YR 109. AI bred to calve January 25, 2010 to STEVENSON IN FOCUS 506T, a past high selling bull to Harrison Angus at Belt, Montana.

**66 DIAMOND ELMARETTA 496U**

Cow 16111790 birth date: 2/19/2008 Tattoo: 496U  
 BOYD ON TARGET 1083 S A F 598 BANDO 5175#  
**STEVENSON MONEYMAKER R185** BOYD FOREVER LADY 7095  
 STEVENSON CLOVA PRIDE L888# VDAR AMBUSH 2478  
 STEVENSON CLOVA PRIDE 712H  
 BR MIDLAND# TWIN VALLEY PRECISION E161#  
**DIAMOND ELMARETTA 282P** BR ROYAL LASS 7036-19  
 DIAMOND ELMARETTA 792M DIAMOND AMBUSH 866K  
 BASIN ELMARETTA 224G

BW	<b>+4.3</b>	WW	<b>+55</b>	Milk	<b>+21</b>	YW	<b>+99</b>
----	-------------	----	------------	------	------------	----	------------

◇ Herd Tag 496U Marb **+0.48** RE **+0.23** \$B **49.70**

A female from the successful blending of Stevenson Moneymaker R185 with BR Midland recording WR 101, YR 105, IMF 119 and REA 112, to rank in the top 10% for WW and the top 5% for YW. The dam of this heifer has 3 WR 101 and 3 YR 103 combined with 3 IMF 101 and 3 REA 107. The grandam has 5 WR 105 and the third dam has 8 WR 104. AI bred to 21AR ROUNDUP 7005 due to calve January 25, 2010.

**67 DIAMOND BLACKCAP 652U**

Cow 16104355 birth date: 2/9/2008 Tattoo: 652U  
 BOYD ON TARGET 1083 S A F 598 BANDO 5175#  
**STEVENSON MONEYMAKER R185** BOYD FOREVER LADY 7095  
 STEVENSON CLOVA PRIDE L888# VDAR AMBUSH 2478  
 STEVENSON CLOVA PRIDE 712H  
 BASIN FRANCHISE P142 C A FUTURE DIRECTION 5321#  
**DIAMOND BLACKCAP 734S** BASIN CHLOE 812L  
 DIAMOND BLACKCAP G315 G T MAXIMUM#  
 BASIN BLACKCAP C S 678X#

BW	<b>+2.8</b>	WW	<b>+55</b>	Milk	<b>+24</b>	YW	<b>+100</b>
----	-------------	----	------------	------	------------	----	-------------

◇ Herd Tag 652U Marb **+0.46** RE **+0.25** \$B **51.14**

A daughter of Stevenson Moneymaker R185 with WR 103 and YR 101 combined with IMF 110 and REA 103 produced as her dam's first calf. This heifer ranks in the top 5% for WW and YW. The grandam is a full sister to the high selling Basin Diamond Max 815D who sold for \$18,000 in the 1994 Stevenson Basin Sale, and she recorded 7 IMF 127. AI bred to 21AR ROUNDUP 7005 due to calve January 28, 2010.



**68**

**STEVENSON EISA U331**

Cow 16116644 birth date: 2/5/2008 Tattoo: U331U  
 BOYD ON TARGET 1083 S A F 598 BANDO 5175#  
**STEVENSON MONEYMAKER R185** BOYD FOREVER LADY 7095  
 STEVENSON CLOVA PRIDE L888# VDAR AMBUSH 2478  
 STEVENSON CLOVA PRIDE 712H  
 BON VIEW EMULATION EXT 473# N BAR EMULATION EXT#  
**OX BOW EISA EVERGREEN 869** BON VIEW RUTH 808  
 SITZ EISA EVERGREEN 3194 V D A R RITO 324  
 SITZ EISA EVERGREEN 1016#

BW	+1.8	WW	+48	Milk	+23	YW	+91
----	------	----	-----	------	-----	----	-----

□ Herd Tag U331U Marb +.27 RE +.03 SB 34.90

A daughter of Stevenson Moneymaker R185 who sold for \$100,000 and went on to be syndicated for \$810,000. The dam is still in production at 11 years of age and she records 9 BR 95, 9 WR 105 and 5 YR 104, 9 IMF 101 and 9 REA 101, and she is an ideal Angus female with a strong long term production records. Confirmed AI bred to 21AR ROUNDUP 7005 due to calve January 23, 2010.



**71**

**DIAMOND BLACK LADY U275**

Cow 16400112 birth date: 3/9/2008 Tattoo: U275  
 BOYD ON TARGET 1083 S A F 598 BANDO 5175#  
**STEVENSON MONEYMAKER R185** BOYD FOREVER LADY 7095  
 STEVENSON CLOVA PRIDE L888# VDAR AMBUSH 2478  
 STEVENSON CLOVA PRIDE 712H  
 SUMMITCREST PRIME CUT 1G42# FINKS 5522-6148#  
**DIAMOND BLACK LADY M67** SUMMITCREST BARBARA 0B74#  
 DIAMOND BLACK LADY 420H BASIN MAX 602C#  
 BEAR CLAW B RAINMAKER 8807#

BW	+2.7	WW	+51	Milk	+25	YW	+91
----	------	----	-----	------	-----	----	-----

◇ Herd Tag U275 Marb +.53 RE +.12 SB 44.68

This bred heifer by Stevenson Moneymaker R185 has WR 107 and YR 103 combined with IMF 105 and REA 105 for an impressive EPD combination. The dam records 3 WR 107, 3 YR 103, 3 IMF 112 and 3 REA 107. Pasture bred to DIAMOND JUSTICE U568 due to calve late March, 2010.

**69**

**STEVENSON CLOVA PRIDE U160**

Cow 16112863 birth date: 2/17/2008 Tattoo: U160  
 BOYD ON TARGET 1083 S A F 598 BANDO 5175#  
**STEVENSON MONEYMAKER R185** BOYD FOREVER LADY 7095  
 STEVENSON CLOVA PRIDE L888# VDAR AMBUSH 2478  
 STEVENSON CLOVA PRIDE 712H  
 STEVENSON MAX J180 BASIN MAX 602C#  
**STEVENSON CLOVA PRIDE 9841** BLACK TOOTH LADY B 380#  
 STEVENSON CLOVA PRIDE 7319 GARDENS PRIME TIME#  
 STEVENSON CLOVA PRIDE W6G

BW	+1.6	WW	+47	Milk	+23	YW	+95
----	------	----	-----	------	-----	----	-----

□ Herd Tag U160 Marb +.37 RE +.06 SB 41.66

This daughter of Stevenson Moneymaker R185 has IMF 115 and REA 105 while offering an impressive EPD combination. This heifer stacks multiple generations of solid production records from the Clova Pride family with her dam recording 5 WR 100, 4 YR 101, 5 IMF 104 and 5 REA 104. Confirmed AI bred to 21AR ROUNDUP 7005 due to calve January 23, 2010.

**72**

**DIAMOND PRIDE 648U**

Cow 16029998 birth date: 1/11/2008 Tattoo: 648U  
 BOYD ON TARGET 1083 S A F 598 BANDO 5175#  
**STEVENSON MONEYMAKER R185** BOYD FOREVER LADY 7095  
 STEVENSON CLOVA PRIDE L888# VDAR AMBUSH 2478  
 STEVENSON CLOVA PRIDE 712H  
 BASIN FRANCHISE P142 C A FUTURE DIRECTION 5321#  
**DIAMOND PRIDE 6457** BASIN CHLOE 812L  
 DIAMOND PRIDE 4189 BASIN DATELINE 752L  
 BASIN PRIDE L905

BW	+1.5	WW	+52	Milk	+25	YW	+98
----	------	----	-----	------	-----	----	-----

◇ Herd Tag 648U Marb +.30 RE +.43 SB 46.94

This bred heifer by the \$810,000 Stevenson Moneymaker R185 has REA 119 and was produced as her dam's first calf. The dam of this heifer is by Basin Franchise P142 backed by generations of Diamond Dot breeding. Bred AI to 21AR ROUNDUP 7005 due to calve February 13, 2010.

**70**

**STEVENSON CLOVA PRIDE 569U**

Cow 16112739 birth date: 2/11/2008 Tattoo: 569U  
 BOYD ON TARGET 1083 S A F 598 BANDO 5175#  
**STEVENSON MONEYMAKER R185** BOYD FOREVER LADY 7095  
 STEVENSON CLOVA PRIDE L888# VDAR AMBUSH 2478  
 STEVENSON CLOVA PRIDE 712H  
 BON VIEW NEW DESIGN 1407# B/R NEW DESIGN 036#  
**STEVENSON CLOVA PRIDE 2855** BON VIEW PRIDE 664  
 STEVENSON CLOVA PRIDE M941 STEVENSON EXPEDITION 7389  
 STEVENSON CLOVA PRIDE 6699#

BW	+2.0	WW	+50	Milk	+25	YW	+95
----	------	----	-----	------	-----	----	-----

□ Herd Tag 569U Marb +.52 RE +.11 SB 43.51

A blending of Stevenson Moneymaker R185 with Bon View New Design 1407 recording IMF 113 and REA 105. This moderate-birth high-growth female is from the herd sire producing Clova Pride family. Confirmed AI bred to 21AR ROUNDUP 7005 due to calve January 29, 2010.

**73**

**DIAMOND TROJAN ERICA 60U4**

Cow 16030026 birth date: 1/19/2008 Tattoo: 60U4  
 BOYD ON TARGET 1083 S A F 598 BANDO 5175#  
**STEVENSON MONEYMAKER R185** BOYD FOREVER LADY 7095  
 STEVENSON CLOVA PRIDE L888# VDAR AMBUSH 2478  
 STEVENSON CLOVA PRIDE 712H  
 ER FOCUS M244 ER FOCUS K189  
**DIAMOND TROJAN ERICA 3495** ERISKAY OF ER J238#  
 DIAMOND TROJAN ERICA 3113 BASIN RAINMAKER L974  
 DIAMOND TROJAN ERICA 924L

BW	+2.8	WW	+51	Milk	+20	YW	+97
----	------	----	-----	------	-----	----	-----

◇ Herd Tag 60U4 Marb +.45 RE +.17 SB 44.75

A daughter of Stevenson Moneymaker R185 from the Trojan Erica family recording IMF 115 as her dam's first calf. The third dam of this heifer has 4 WR 107, 4 YR 102, 65 IMF 107 and- 65 REA 104, and is the dam of herd sires Diamond Bushwacker 9095, Diamond Payweight OR29, Diamond Future Direction 9P10 and Diamond Future Direction OP35 as well as being the dam of four donor cows. AI bred to GAR ULTIMATE due to calve January 26, 2010.



**Reference  
Sire**



**Hoover-Dam**

Stevenson Genetics Herd Bull and Service Sire to LOTS 74-79

**74**

**DIAMOND ERICA 279R**

Cow 14982921 birth date: 2/17/2005 Tattoo: 279R  
 ER FOCUS K189 S A F FOCUS OF E R#  
**ER FOCUS M244** SITZ EVERELDA ENTENSE 023  
 ERISKAY OF ER J238# E R KNIGHT 529  
 ERISKAY OF R R 1448  
 DIAMOND AMBUSH 866K ROCKN D AMBUSH 1531#  
**DIAMOND ERICA 097M** DIAMOND JANNET H909  
 DIAMOND ERICA 859K BASIN PRIME 476G  
 DIAMOND ERICA 220H

BW	<b>+2.2</b>	WW	<b>+42</b>	Milk	<b>+23</b>	YW	<b>+86</b>
◇ Herd Tag	580	Marb	<b>+46</b>	RE	<b>+0.5</b>	\$B	<b>42.59</b>

This production cow from the Erica family records 1 NR 102, 1 YR 101 and 1 IMF 102 after recording an individual YR 107, IMF 105 and REA 109. The dam of this cow has 2 WR 103, 2 YR 110, 2 IMF 100 and 2 REA 103. The grandam has 3 WR 113 and the third dam has 3 WR 108. AI bred to HOOVER DAM due to calve March 15, 2010.

**76**

**DIAMOND BELLE 124P**

Cow 14729929 birth date: 2/17/2004 Tattoo: 124P  
 GARDENS EXPEDITION# N BAR EMULATION EXT#  
**BASIN EXPEDITION 6241** GREEN GARDEN GINA 2268 S2  
 BASIN CHLOE 350F# BASIN DIAMOND MAX 815D#  
 BASIN CHLOE 863  
 BASIN RAINMAKER 814Z# BASIN RAINMAKER D S 380U#  
**DIAMOND BELLE 310L** BASIN PAMELLA 676X#  
 DIAMOND BELLE 5313 G T MAXIMUM#  
 BASIN BELLE 4120

BW	<b>+0.3</b>	WW	<b>+38</b>	Milk	<b>+19</b>	YW	<b>+76</b>
◇ Herd Tag	W486	Marb	<b>+25</b>	RE	<b>+0.4</b>	\$B	<b>34.97</b>

The 2008 heifer from this cow was selected among 800+ registered Angus heifer calves to be featured in the National Western Foundation Female Sale in Denver. This cow records 4 NR 103, 2 YR 105 and 2 REA 104. AI bred to HOOVER DAM carrying a heifer calf due to calve January 30, 2010.

**75**

**KEYSTONE DUCHESS 420**

Cow 14792492 birth date: 2/1/2004 Tattoo: 420  
 B/R NEW DESIGN 036# V D A R NEW TREND 315#  
**BON VIEW NEW DESIGN 878#** B/R BLACKCAP EMPRESS 76  
 BON VIEW GAMMER 85 BON VIEW BANDO 598#  
 BON VIEW GAMMER 233  
 LEACHMAN RIGHT TIME# N BAR EMULATION EXT#  
**KEYSTONE DUCHESS 30** LEACHMAN ERICA 0025  
 KEYSTONE DUCHESS 328 G T MAXIMUM#  
 KEYSTONE DUCHESS 7-3

BW	<b>-0.6</b>	WW	<b>+42</b>	Milk	<b>+24</b>	YW	<b>+79</b>
◇ Herd Tag	Y445	Marb	<b>+41</b>	RE	<b>-.10</b>	\$B	<b>39.53</b>

The dam of the current Diamond dot donor Diamond Duchess G603 who in turn produced the high selling Diamond Dot bull of the Spring 2009 Stevenson Genetics Sale, Diamond Shear Force 8603, with embryos from her featured in the 2009 NILE Sale. This female is backed by the highly proven genetics of the Pathfinder Sires Bon View New Design 878 and Leachman Right Time. AI bred to HOOVER DAM due to calve February 10, 2010.

**77**

**DIAMOND JANNET 554**

Cow +14729871 birth date: 2/1/2004 Tattoo: 554  
 TWIN VALLEY PRECISION E161# G A R PRECISION 1680#  
**BR MIDLAND#** W C C BLACKCAP C9  
 BR ROYAL LASS 7036-19 S A F NEUTRON#  
 S A F ROYAL LASS 7036#  
 SCHURRTOP SUPREME# V D A R NEW TREND 315#  
**BASIN GREYSTONE JANNET 3519** SCHURRTOP PAM 3449  
 BASIN GREYSTONE JANNET 6779 RAMBO 465T OF J R S#  
 BASIN GREYSTONE JANNET 2862

BW	<b>+1.2</b>	WW	<b>+38</b>	Milk	<b>+19</b>	YW	<b>+72</b>
◇ Herd Tag	490	Marb	<b>+34</b>	RE	<b>+0.30</b>	\$B	<b>39.47</b>

A daughter of the \$202,000 BR Midland from the herd sire producing Greystone Jannet family. This cow has 2 IMF 107 and 2 REA 105. The dam of this cow records 3 WR 115 and 3 YR 109 combined with 52 IMF 100 and 53 REA 105, serving as a second generation embryo donor. AI bred to HOOVER DAM, due to calve February 25, 2010.

# AI BRED COWS DUE WITH HEIFER CALVES

## 78 DIAMOND BLACKCAP LADY 2333

Cow #14420815 birth date: 2/19/2003 Tattoo: 2333  
 N BAR EMULATION EXT# EMULATION N BAR 5522#  
**GARDENS EXPEDITION#** N BAR PRIMROSE 2424  
 GREEN GARDEN GINA 2268 S2 GARDENS TRANSITION 7205 S1  
 GREEN GARDEN GINA 0261 S2  
 BASIN RAINMAKER 654X# BASIN RAINMAKER D S 380U#  
**BASIN BLACKCAP LADY 219H** BASIN BARDOLENE 423U  
 BASIN BLACKCAP LADY B98 GARDENS SENSATION 039 S1  
 G D A R BLACKCAP LADY 039

BW <b>+0.0</b>	WW <b>+26</b>	Milk <b>+29</b>	YW <b>+65</b>
----------------	---------------	-----------------	---------------

◇ Herd Tag W316 Marb **+60** RE **+04** SB **31.80**

A Diamond Dot donor cow and the dam of the Diamond Dot herd sire Diamond Future Direction R316. Three sons of this cow sired by Moneymaker are front pen bulls and sell as Lots 31, 32 and 33 in the November 24th bull sale. This past production record on three flushes has yielded an average of more than 20 embryos per flush. 29 IMF 112 from a dam with 5 WR 113, 4 YR 107 and 49 IMF 106. AI bred to HOOVER DAM carrying a heifer calf due to calve February 25, 2010.

## 81 KEYSTONE LILY 480

Cow #14678607 # birth date: 2/16/2004 Tattoo: 480  
 CONNEALY FRONTLINE# CONNEALY DATELINE#  
**LEACHMAN QUICKEN THE PACE#** PLEASANT PILL OF CONANGA#  
 LEACHMAN BLACKCAP 7209 LEACHMAN RIGHT TIME#  
 LEACHMAN BLACKCAP 2046  
 BASIN SPADE 702Z HOFF HI THRUST S C 657  
**KEYSTONE LILY 8-454** BASIN ERICA 402W  
 KEYSTONE LILY 8-127 RITO 2100 G D A R#  
 KEYSTONE LILY 8-315

BW <b>+2.0</b>	WW <b>+45</b>	Milk <b>+24</b>	YW <b>+82</b>
----------------	---------------	-----------------	---------------

◇ Herd Tag P456 Marb **+11** RE **+03** SB **27.87**

PATHFINDER DAM. This proven Pathfinder Dam records 4 WR 102, 3 YR 104 and 3 IMF 104 after earning individual WR 103 and YR 106. The dam of this cow has 9 WR 102 and 8 YR 106 while the grandam records 9 WR 106 and 9 YR 108. AI bred to 21AR ROUNDUP 7005 carrying a heifer calf due to calve January 30, 2010.

## 79 DIAMOND ELMARETTA N527

Cow #14404496 birth date: 2/25/2003 Tattoo: N527  
 N BAR EMULATION EXT# EMULATION N BAR 5522#  
**GARDENS EXPEDITION#** N BAR PRIMROSE 2424  
 GREEN GARDEN GINA 2268 S2 GARDENS TRANSITION 7205 S1  
 GREEN GARDEN GINA 0261 S2  
 BALDRIDGE OSCAR# LOMA LANES CRACKER JACK 12J#  
**BASIN ELMARETTA 1377#** F V QUEEN 399#  
 RICH ELMARETTA 448 GARNEY EMULOUS BAILIFF  
 J R S ELMARETTA 1454

BW <b>+2.9</b>	WW <b>+44</b>	Milk <b>+9</b>	YW <b>+81</b>
----------------	---------------	----------------	---------------

◇ Herd Tag W333 Marb **+25** RE **+04** SB **38.41**

This daughter of the Pathfinder Sire Gardens Expedition has 2 IMF 109 and 2 REA 102. The donor dam of this cow is one of the top embryo production cows of all-time recording 9 WR 108, 7 YR 109 and 171 REA 101. The grandam records 8 WR 107 and 7 YR 108. AI bred to HOOVER DAM carrying a heifer calf due to calve February 25, 2010.

## 82 DIAMOND ENCHANTRESS R322

Cow #14983259 birth date: 1/19/2005 Tattoo: R322  
 G T MAXIMUM# SCOTCH CAP#  
**BASIN MAX 602C#** GT MISS TRAVELER 58#  
 BASIN ELINE ERICA 315U# G D A R RAINMAKER 340#  
 BASIN ELINE ERICA 1313  
 GARDENS EXPEDITION# N BAR EMULATION EXT#  
**DIAMOND ENCHANTRESS N751** GREEN GARDEN GINA 2268 S2  
 DIAMOND ENCHANTRESS 424F# BASIN RAINMAKER 814Z#  
 DIAMOND ENCHANTRESS 1D

BW <b>+0.3</b>	WW <b>+39</b>	Milk <b>+19</b>	YW <b>+78</b>
----------------	---------------	-----------------	---------------

◇ Herd Tag G520 Marb **+27** RE **+03** SB **34.41**

This daughter of the Pathfinder Sire Basin Max 602C is from the herd sire producing Enchantress family recording 2 YR 102 and 2 REA 104. The dam has 4 WR 101 while the grandam records 5 WR 111. AI bred to GAR ULTIMATE carrying a heifer calf due to calve January 26, 2010.

## 80 DIAMOND BLACKCAP 371R

Cow #14982939 birth date: 2/18/2005 Tattoo: 371R  
 VERMILION DATELINE 7078# CONNEALY DATELINE#  
**VERMILION PAYWEIGHT J847#** VERMILION BLACKBIRD 5044#  
 VERMILION LASS 7969 TOP SECRET 9757 E A R  
 VERMILION 155 LASS 2046  
 SUMMITCREST DIAMOND 0K24 GARDENS PRIME TIME#  
**DIAMOND BLACKCAP 826N** SUMMITCREST GAYBIRD 3H77  
 DIAMOND BLACKCAP 307H BASIN RAINMAKER 2844#  
 BASIN BLACKCAP C S 815A

BW <b>+2.0</b>	WW <b>+52</b>	Milk <b>+29</b>	YW <b>+87</b>
----------------	---------------	-----------------	---------------

◇ Herd Tag W558 Marb **+24** RE **+10** SB **34.08**

A daughter of the Pathfinder Sire Vermilion Payweight J847 from the high production Blackcap family. This cow has 3 NR 102, 2 YR 105, 2 IMF 110. The dam of this cow has 4 WR 102 while the grandam has 5 WR 107 and the third dam has 5 WR 109. AI bred to 21AR ROUNDUP 7005 carrying a heifer calf due to calve January 30, 2010.

## 83 DIAMOND LELA 002M

Cow #14113373 birth date: 1/10/2002 Tattoo: 002M  
 G T MAXIMUM# SCOTCH CAP#  
**BASIN MAX 602C#** GT MISS TRAVELER 58#  
 BASIN ELINE ERICA 315U# G D A R RAINMAKER 340#  
 BASIN ELINE ERICA 1313  
 DIAMOND RAINMAKER 154E# BLACK TOOTH RAINMAKER 911  
**DIAMOND LELA 224K#** BASIN BLACKCAP C S 815A  
 KEYSTONE LELA 6-227 BASIN SPADE 702Z  
 KEYSTONE LELA 6-24

BW <b>+0.2</b>	WW <b>+32</b>	Milk <b>+17</b>	YW <b>+72</b>
----------------	---------------	-----------------	---------------

◇ Herd Tag G201 Marb **+20** RE **+02** SB **30.91**

This daughter of the Pathfinder Sire Basin Max 602C has 6 WR 101, 4 YR 105 and 4 REA 106. AI bred to GAR ULTIMATE carrying a heifer calf due to calve February 26, 2010.



21AR Roundup 7005



GAR Ultimate



Reference  
Sire



21AR Coal Bank C014



**84 STEVENSON ENCHANTRESS C639U**

Cow 16156228 birth date: 2/20/2008 Tattoo: C639U  
 BASIN MAX 602C# G T MAXIMUM#  
**21AR COAL BANK C014** BASIN ELINE ERICA 315U#  
 LEACHMAN LASS 5014# N BAR EMULATION EXT#  
 N BAR EMULATION EXT V722 LEACHMAN LASS 3056  
**STEVENSON ENCHANTRESS 125J** N BAR EMULATION EXT#  
 J R S ENCHANTRESS 403U N BAR BLACKBIRD 4307#  
 BURTHLENE CANNONEER 21R#  
 J R S ENCHANTRESS 383L

BW **+1.6** WW **+43** Milk **+12** YW **+72**

□ Herd Tag C639U Marb **-.01** RE **+0.06** SB **18.68**  
 A daughter of the featured ORigen and ABS Global calving-ease sire 21AR Coal Bank C014. This female is from the herd sire producing Enchantress family from a dam by the proven Pathfinder Sire N Bar Emulation EXT V722. Confirmed AI bred to 21AR ROUNDUP 7005 due to calve January 27, 2010.

**85 STEVENSON ZARA C647U**

Cow 16162282 birth date: 1/28/2008 Tattoo: C647U  
 BASIN MAX 602C# G T MAXIMUM#  
**21AR COAL BANK C014** BASIN ELINE ERICA 315U#  
 LEACHMAN LASS 5014# N BAR EMULATION EXT#  
 LEACHMAN LASS 3056  
 KAHN BROADBAND R A 94L# BON VIEW BANDO 598#  
**ER ZARA N052** SHADYBROOK EVER INTENSE 491G  
 ER ZARA L236 S A F FOCUS OF E R#  
 STEVENSON ZARA 821E#

BW **-0.4** WW **+50** Milk **+22** YW **+92**

□ Herd Tag C647U Marb **+0.06** RE **+1.14** SB **27.43**  
 A daughter of the proven calving-ease sire 21AR Coal Bank C014 from a dam who stacks multiple generations of proving calving-ease genetics sired by Kahn Broadband RA 94L tracing to SAF Focus of ER. The dam of this heifer combines 2 BR 90, 2 WR 107, 2 YR 101 and 2 REA 111. Confirmed AI bred to GAR ULTIMATE due to calve January 24, 2010.

**86 STEVENSON RUBY C648U**

Cow 16162277 birth date: 1/25/2008 Tattoo: C648U  
 BASIN MAX 602C# G T MAXIMUM#  
**21AR COAL BANK C014** BASIN ELINE ERICA 315U#  
 LEACHMAN LASS 5014# N BAR EMULATION EXT#  
 LEACHMAN LASS 3056  
 GARDENS EXPEDITION# N BAR EMULATION EXT#  
**BASIN RUBY 2P55** GREEN GARDEN GINA 2268 S2  
 BASIN RUBY 721M SITZ IMF 7839#  
 BASIN RUBY 383E

BW **+1.1** WW **+40** Milk **+17** YW **+79**

□ Herd Tag C648U Marb **+1.15** RE **-.01** SB **25.00**  
 A promising bred heifer by 21AR Coal Bank C014 from a dam by the Pathfinder Sire Gardens Expedition. This heifer is from the noted Ruby family. Confirmed AI bred to 21AR ROUNDUP 7005 due to calve January 27, 2010.

**87 DIAMOND ERICA U124**

Cow 16110276 birth date: 2/20/2008 Tattoo: U124  
 C A FUTURE DIRECTION 5321# G A R PRECISION 1680#  
**STEVENSON CE DELUXE 1914** C A MISS POWER FIX 308  
 FSHK PRIDE 180# SITZ ALLIANCE 6595#  
 FSHK PRIDE 725  
 BASIN KRUGERRAND 496H KRUGERRAND OF DONAMERE 490#  
**DIAMOND ERICA 1788** BASIN CHLOE 9202#  
 BASIN ERICA 273G BASIN MAX 602C#  
 BASIN ERICA 705E

BW **+2.1** WW **+47** Milk **+26** YW **+94**

◇ Herd Tag U124 Marb **+4.8** RE **+1.15** SB **52.79**  
 This daughter of Stevenson CE Deluxe 1914 from the Diamond Dot program records WR 100, YR 103, IMF 106 and REA 101, from a dam with 5 WR 104 and 4 YR 102. AI bred to 21AR ROUNDUP 7005 due to calve January 26, 2010.

**88 DIAMOND ENCHANTRESS 8386**

Cow 16120923 birth date: 3/6/2008 Tattoo: 8386  
 C A FUTURE DIRECTION 5321# G A R PRECISION 1680#  
**STEVENSON CE DELUXE 1914** C A MISS POWER FIX 308  
 FSHK PRIDE 180# SITZ ALLIANCE 6595#  
 FSHK PRIDE 725  
 DIAMOND AMBUSH 740L ROCKN D AMBUSH 1531#  
**DIAMOND ENCHANTRESS 990N** DIAMOND TROJAN ERICA G104  
 DIAMOND ENCHANTRESS J563 GARDENS PRIME TIME#  
 BASIN ENCHANTRESS D14A#

BW **+3.9** WW **+48** Milk **+20** YW **+94**

◇ Herd Tag 8386 Marb **+7.6** RE **+1.20** SB **58.43**  
 Another daughter of the low-birth weight high-growth sire Stevenson CE Deluxe 1914. This female has IMF 119 and REA 104 from the herd sire producing Enchantress family. Bred AI to 21AR ROUNDUP 7005 due to calve January 29, 2010.

**89 DIAMOND BLACK LADY 8683**

Cow 16030019 birth date: 1/18/2008 Tattoo: 8683  
 C A FUTURE DIRECTION 5321# G A R PRECISION 1680#  
**STEVENSON CE DELUXE 1914** C A MISS POWER FIX 308  
 FSHK PRIDE 180# SITZ ALLIANCE 6595#  
 FSHK PRIDE 725  
 MEADOWS ALIGNMENT 3852 VERMILION DATELINE 7078#  
**DIAMOND BLACK LADY 6147** MEADOWS SUZANDRA SPAN H385  
 DIAMOND BLACK LADY 6511# BASIN MAX 602C#  
 DIAMOND BLACK LADY 316E

BW **+1.4** WW **+49** Milk **+25** YW **+93**

◇ Herd Tag 8683 Marb **+5.1** RE **+1.29** SB **52.71**  
 An opportunity to select from a group of sisters sired by Stevenson CE Deluxe 1914. This heifer was produced as her dam's first calf and stems from a grandam with 6 WR 103, 6 YR 105, 6 IMF 105 and 6 REA 102. Bred AI to 21AR ROUNDUP 7005 due to calve January 25, 2010.

Reference  
Dam



Stevenson Lady 8760

90

**STEVENSON LADY R428U**

Cow +16156393 birth date: 3/20/2008 Tattoo: R428U  
 S S OBJECTIVE T510 OT26# S S TRAVELER 6807 T510#  
**QUAKER HILL OBJECTIVE 3J15** S S MISS RITA R011 7R8  
 QUAKER HILL QUEEN 1L4# BW/QHF BLACKCAP LAD  
 ANKONY QUEEN Q H F R981  
 STEVENSON ROLLING THUNDER# G D A R RAINMAKER 340#  
**STEVENSON LADY 8760#** AHLGRENS ESTELLA 2758 E T E#  
 STEVENSON LADY 305H MRG 604G OF PARTNER  
 STEVENSON LADY 753E

BW	<b>+2.5</b>	WW	<b>+61</b>	Milk	<b>+31</b>	YW	<b>+100</b>
☐ Herd Tag	R428U	Marb	<b>+0.17</b>	RE	<b>+0.35</b>	\$B	<b>45.00</b>

This bred heifer ranks in the upper percentiles for both WW and YW combining WR 105 and YR 105 with REA 115. This heifer by Quaker Hill Objective 3J15 is from the all-time production daughter of Stevenson Rolling Thunder who was a feature of the 2007 sale exported to Canada where she continued to serve as a donor and currently combines 6 BR 98 with 6 WR 111 and 5 YR 108. This heifer is backed by an outcross pedigree and great cow family history with her maternal brother Stevenson New Design 0062 serving as a herd sire. Confirmed AI bred to SAV BISMARCK 5682 due to calve January 23, 2010.

Reference  
Sire



Quaker Hill Objective 3J15

Reference  
Sire



Stevenson Rolling Thunder



Reference  
Sire



F V 20K King 308M

Reference  
Sire



Basin Max 602C

**91 STEVENSON PRIDE LADY U224**

Cow 16112645 birth date: 1/31/2008 Tattoo: U224  
 RAFTER S RONAN TEX 20K  
**F V 20K KING 308M**  
 QUEEN 362E  
 A A R RAMBLER 779#  
**STEVENSON PRIDE LADY 0662**  
 STEVENSON PRIDE LADY 6360

BW **+1.9** WW **+46** Milk **+18** YW **+82**

□ Herd Tag U224 Marb **+1.7** RE **+0.4** \$B **31.29**

This outcross female by FV 20K King 308m is a maternal sister to Lot 18 from an impressive dam by AAR Rambler 779. This heifer has YR 102 and REA 111 from the Pride Lady family. Confirmed AI bred to STEVENSON HERO 1216U due to calve January 24, 2010.

**94 DIAMOND LUCY 3308**

Cow +16120981 birth date: 3/7/2008 Tattoo: 3308  
 G T MAXIMUM#  
**BASIN MAX 602C#**  
 BASIN ELINE ERICA 315U#  
 J W JUSRITE 16#  
**DIAMOND LUCY 808L#**  
 DIAMOND LUCY 503H#

BW **I+3.4** WW **I+51** Milk **I+25** YW **I+95**

◇ Herd Tag 3308 Marb **+3.0** RE **+0.1** \$B **42.25**

A full sister to Diamond Max 180N and to the featured Lot 13 donor cow in this sale from the same Lucy family that produced her famous paternal sister Basin Lucy 178E. This bred heifer is from a top-indexing donor dam with 5 WR 113 and 5 YR 113 with 44 progeny evaluated by ultrasound. Bred AI to GAR ULTIMATE due to calve February 14, 2010.

**92 STEVENSON ERCIA U247**

Cow 16112498 birth date: 1/23/2008 Tattoo: U247  
 RAFTER S RONAN TEX 20K  
**F V 20K KING 308M**  
 QUEEN 362E  
 A A R RAMBLER 779#  
**STEVENSON ERCIA M919**  
 STEVENSON ERCIA J610

BW **+0.4** WW **+40** Milk **+17** YW **+71**

□ Herd Tag U247 Marb **+2.2** RE **-.05** \$B **26.05**

This outcross heifer by FV 20K King 308M is a three-quarter sister to Lot 91 from a dam by AAR Rambler 779. Confirmed AI bred to 21AR ROUNDUP 7005 due to calve January 27, 2010.

**95 DIAMOND BELLE U368**

Cow 16016482 birth date: 2/6/2008 Tattoo: U368  
 G T MAXIMUM#  
**BASIN MAX 602C#**  
 BASIN ELINE ERICA 315U#  
 BROOKS EXT 792#  
**DIAMOND BELLE 761N**  
 DIAMOND BELLE 203G

BW **+2.8** WW **+47** Milk **+21** YW **+90**

◇ Herd Tag U368 Marb **+3.5** RE **-.08** \$B **42.32**

This bred heifer by the established Pathfinder Sire Basin Max 602C has WR 110 and YR 115 combined with IMF 134 for a solid performance and EPD combination. The dam of this heifer is a daughter of Brooks EXT 792 with 4 WR 108 and 4 YR 104 combined with 4 IMF 119. Bred AI to GAR ULTIMATE due to calve January 25, 2010.

**93 STEVENSON EISA ERICA 3068**

Cow 16112771 birth date: 2/15/2008 Tattoo: 3068  
 RAFTER S RONAN TEX 20K  
**F V 20K KING 308M**  
 QUEEN 362E  
 C A FUTURE DIRECTION 5321#  
**STEVENSON EISA ERICA 9263**  
 STEVENSON EISA ERICA S86J

BW **+4.1** WW **+44** Milk **+26** YW **+73**

□ Herd Tag 3068 Marb **+2.4** RE **-.06** \$B **33.22**

This daughter of the Canadian outcross sire FV 20K King 308M is backed by multiple generations of top production cows. The dam of this heifer has 3 WR 111 while the grandam records 6 WR 109 and 6 YR 105 combined with 8 IMF 114. Confirmed AI bred to 21AR ROUNDUP 7005 due to calve January 26, 2010.

**96 DIAMOND LULUA U657**

Cow 16030052 birth date: 1/9/2008 Tattoo: U657  
 G T MAXIMUM#  
**BASIN MAX 602C#**  
 BASIN ELINE ERICA 315U#  
 VERMILION PAYWEIGHT J847#  
**DIAMOND LULUA 484S**  
 DIAMOND LULUA 4223

BW **+0.5** WW **+51** Milk **+20** YW **+99**

◇ Herd Tag U657 Marb **+1.4** RE **+3.8** \$B **42.79**

The result of the successful blending of Basin Max 602C with Vermilion Payweight J847. This heifer has WR 104 and YR 106 combined with REA 124. Bred AI to 21AR BIG SPREAD 7012A due to calve January 28, 2010.

Reference  
Sire



Stevenson Moneymaker R185

**98** STEVENSON ESTELLA U287

Cow 16112864 birth date: 2/17/2008 Tattoo: U287  
 BOYD ON TARGET 1083 S A F 598 BANDO 5175#  
**STEVENS ON MONEYMAKER R185** BOYD FOREVER LADY 7095  
 STEVENSON CLOVA PRIDE L888# VDAR AMBUSH 2478  
 STEVENSON CLOVA PRIDE 712H  
 VERMILION YELLOWSTONE# VERMILION DATELINE 7078#  
**STEVENS ON ESTELLA 876M** VERMILION B JESTRESS 3912  
 STEVENSON ESTELLA 8356 STEVENSON EXCITEMENT 830F  
 STEVENSON ESTELLA 8356

BW **+2.2** WW **+55** Milk **+19** YW **+97**

□ Herd Tag U287 Marb **+36** RE **-.05** \$B **38.18**

A special attraction female from the herd sire producing Estella family by the \$810,000 Stevenson Moneymaker R185. This elite EPD female has WR 103 and YR 101 to rank in the top 4% for WW and in the top 10% for YW. Confirmed AI bred to 21AR ROUNDUP 7005 due to calve January 26, 2010.

**99** STEVENSON CLOVA PRIDE U593

Cow 16112625 birth date: 1/29/2008 Tattoo: U593  
 BOYD ON TARGET 1083 S A F 598 BANDO 5175#  
**STEVENS ON MONEYMAKER R185** BOYD FOREVER LADY 7095  
 STEVENSON CLOVA PRIDE L888# VDAR AMBUSH 2478  
 STEVENSON CLOVA PRIDE 712H  
 BR MIDLAND# TWIN VALLEY PRECISION E161#  
**STEVENS ON CLOVA PRIDE 22R5** BR ROYAL LASS 7036-19  
 STEVENSON CLOVA PRIDE L901 ROCKN D AMBUSH 1531#  
 STEVENSON CLOVA PRIDE 7229

BW **+2.8** WW **+54** Milk **+19** YW **+102**

□ Herd Tag U593 Marb **+52** RE **+18** \$B **50.42**

This bred heifer from the herd sire producing Clova Pride family is backed by the high selling sires Stevenson Moneymaker R185 and BR Midland. The dam of this heifer is a maternal sister to the three top-selling bred heifers of the 2009 sale and to a long list of other top-selling individuals descending from the prolific Stevenson Clova Pride L901 who was the all-time top-income-producing cow in the Stevenson program. This heifer ranks in the top 5% for both WW and YW. Confirmed AI bred to 21AR ROUNDUP 7005 due to calve January 27, 2010.



**100** DIAMOND LUCY 563U

Cow 16016498 birth date: 1/30/2008 Tattoo: 563U  
 BOYD ON TARGET 1083 S A F 598 BANDO 5175#  
**STEVENS ON MONEYMAKER R185** BOYD FOREVER LADY 7095  
 STEVENSON CLOVA PRIDE L888# VDAR AMBUSH 2478  
 STEVENSON CLOVA PRIDE 712H  
 BR MIDLAND# TWIN VALLEY PRECISION E161#  
**DIAMOND LUCY 6675** BR ROYAL LASS 7036-19  
 BASIN LUCY 178D G T MAXIMUM#  
 BASIN LUCY 855A#

BW **+2.2** WW **+60** Milk **+20** YW **+110**

◇ Herd Tag 563U Marb **+35** RE **+13** \$B **48.78**

This bred heifer from the Lucy family is backed by the high selling sires Stevenson Moneymaker R185 and BR Midland descending from a grandam who is a maternal sister to the legendary Basin Lucy 178E. This heifer has WR 109 and YR 112 combined with IMF 102 and REA 103 and her grandam recorded 7 WR 110 and 7 YR 106. Pasture bred to DIAMOND JUSTICE U568 carrying a heifer calf due to calve the first week of March 2010.

**101** DIAMOND PRIDE LADY 64U6

Cow 16031238 birth date: 1/19/2008 Tattoo: 64U6  
 BOYD ON TARGET 1083 S A F 598 BANDO 5175#  
**STEVENS ON MONEYMAKER R185** BOYD FOREVER LADY 7095  
 STEVENSON CLOVA PRIDE L888# VDAR AMBUSH 2478  
 STEVENSON CLOVA PRIDE 712H  
 DIAMOND 4186 SUMMITCREST DIAMOND 0K24  
**DIAMOND PRIDE LADY 6490** BASIN ERICA L916  
 DIAMOND PRIDE LADY 843P BASIN PAYWEIGHT 959M  
 DIAMOND PRIDE LADY 629H

BW **+2.1** WW **+52** Milk **+26** YW **+93**

◇ Herd Tag 64U6 Marb **+32** RE **+17** \$B **41.82**

This daughter of the \$810,000 Stevenson Moneymaker R185 was produced as the first calf from a dam by the noted Diamond 4186. The grandam records 3 WR 112 and 3 YR 107. AI bred to GAR ULTIMATE due to calve January 28, 2010.

**102** DIAMOND ENCHANTRESS 8475

Cow 16016465 birth date: 2/2/2008 Tattoo: 8475  
 BOYD ON TARGET 1083 S A F 598 BANDO 5175#  
**STEVENS ON MONEYMAKER R185** BOYD FOREVER LADY 7095  
 STEVENSON CLOVA PRIDE L888# VDAR AMBUSH 2478  
 STEVENSON CLOVA PRIDE 712H  
 VERMILION YELLOWSTONE# VERMILION DATELINE 7078#  
**DIAMOND ENCHANTRESS P776** VERMILION B JESTRESS 3912  
 DIAMOND ENCHANTRESS 424F# BASIN RAINMAKER 814Z#  
 DIAMOND ENCHANTRESS 1D

BW **+3.2** WW **+52** Milk **+22** YW **+97**

◇ Herd Tag 8475 Marb **+40** RE **+04** \$B **44.09**

This bred heifer by Stevenson Moneymaker R185 is from a dam by the Pathfinder Sire Vermilion Yellowstone. This high-growth female ranks in the top 10% for YW. Pasture bred to DIAMOND JUSTICE U568 due to calve the third week of March 2010.

**103** DIAMOND JANNET 6U37

Cow 16051868 birth date: 3/2/2008 Tattoo: 6U37  
 BASIN MAX 602C# G T MAXIMUM#  
**DIAMOND MAX 4573** BASIN ELINE ERICA 315U#  
 DIAMOND VIXON 6P42# BROOKS EXT 792#  
 BT VIXON 379K  
 FV NEW DIMENSION P142 B/R NEW DIMENSION 7127#  
**DIAMOND JANNET 3865** G A R PRECISION 939  
 DIAMOND JANNET 61N B/R NEW DESIGN 323#  
 BASIN GREYSTONE JANNET 6779

BW **-1.8** WW **+40** Milk **+25** YW **+89**

◇ Herd Tag 6U37 Marb **+54** RE **+27** \$B **53.63**

This bred heifer from the Greystone Jannet family is a granddaughter of the Pathfinder Sire Basin Max 602C with YR 122 combined with IMF 135 and REA 115. Pasture bred to DIAMOND STARDOM 3U68 carrying a heifer calf due to calve the last week of February 2010.



Reference  
Sire



Mytty In Focus

**104 STEVENSON ESTELLA U584**

Cow 16114059 birth date: 2/7/2008 Tattoo: U584  
S A F FOCUS OF E R#  
**MYTTY IN FOCUS**  
MYTTY COUNTESS 906  
N BAR EMULATION EXT#  
**STEVENSON ESTELLA 25R4**  
STEVENSON ESTELLA 758C

S A F FAME#  
G D A R FOREVER LADY 246  
SITZ ALLIANCE 6595#  
BALDRIDGE COUNTESS 357  
EMULATION N BAR 5522#  
N BAR PRIMROSE 2424  
G D A R ROYCE 131#  
AHLGRENS ESTELLA 2758 E T E#

BW **+0.7** WW **+43** Milk **+19** YW **+83**

□ Herd Tag U584 Marb **+45** RE **-12** \$B **47.30**

A huge performance heifer with moderate birth weight from the Estella family recording an individual yearling ratio of 154 combined with an individual IMF ratio of 126. The grandam records 3 WR 107 and 1 YR 107 while the legendary Pathfinder third dam records 10 WR 110 and 9 YR 111. Confirmed AI bred to 21AR ROUNDUP 7005 due to calve January 27, 2010.

**105 STEVENSON MISS ANGUS 4648**

Cow 16114034 birth date: 1/28/2008 Tattoo: 4648  
S A F FOCUS OF E R#  
**MYTTY IN FOCUS**  
MYTTY COUNTESS 906  
BOYD ON TARGET 1083  
**STEVENSON MISS ANGUS 6334**  
STEVENSON MISS ANGUS 362F

S A F FAME#  
G D A R FOREVER LADY 246  
SITZ ALLIANCE 6595#  
BALDRIDGE COUNTESS 357  
S A F 598 BANDO 5175#  
BOYD FOREVER LADY 7095  
BASIN RAINMAKER 2844#  
MISS J R S ANGUS 609Y

BW **+2.1** WW **+47** Milk **+22** YW **+90**

□ Herd Tag 4648 Marb **+33** RE **-13** \$B **34.22**

This daughter of the popular low-birth weight sire Mytty In Focus is from a dam by Boyd On Target 1083 backed by generations of proven genetics. Confirmed AI bred to 21AR ROUNDUP 7005 due to calve January 27, 2010.

**106 STEVENSON PRIDE LADY 4598**

Cow 16114099 birth date: 2/19/2008 Tattoo: 4598  
S A F FOCUS OF E R#  
**MYTTY IN FOCUS**  
MYTTY COUNTESS 906  
BOYD ON TARGET 1083  
**STEVENSON PRIDE LADY 4894**  
STEVENSON PRIDE LADY 684D

S A F FAME#  
G D A R FOREVER LADY 246  
SITZ ALLIANCE 6595#  
BALDRIDGE COUNTESS 357  
S A F 598 BANDO 5175#  
BOYD FOREVER LADY 7095  
IMPACT 2001 G G#  
JRS PRIDE LADY 827B

BW **+2.6** WW **+44** Milk **+23** YW **+81**

□ Herd Tag 4598 Marb **+41** RE **-10** \$B **36.84**

A blending of the highly proven genetics of Mytty In Focus and Boyd On Target 1083. This heifer stems from a grandam with 11 WR 102. Confirmed AI bred to 21AR ROUNDUP 7005 due to calve January 27, 2010.

**107 STEVENSON BLACKTOP U685**

Cow 16112440 birth date: 1/17/2008 Tattoo: U685  
S A F FOCUS OF E R#  
**MYTTY IN FOCUS**  
MYTTY COUNTESS 906  
BASIN PAYWEIGHT 983M  
**STEVENSON BLACKTOP 0556**  
STEVENSON BLACKTOP D87K

S A F FAME#  
G D A R FOREVER LADY 246  
SITZ ALLIANCE 6595#  
BALDRIDGE COUNTESS 357  
VERMILION PAYWEIGHT J847#  
BASIN TROJAN ERICA J636#  
ROCKN D AMBUSH 1531#  
STEVENSON BLACKTOP 4458

BW **-0.3** WW **+43** Milk **+22** YW **+93**

□ Herd Tag U685 Marb **+28** RE **+21** \$B **40.74**

A daughter from the all time semen selling herd bull from ABS Global, LOT 108 scanned very well with a 111 REA. From a productive cow family, her dam was a first calf heifer and her grandam recorded 6 NR 100, 6 YR 101 along with 6 REA 107. Confirmed AI bred to 21AR ROUNDUP 7005. Due to calve January 27, 2010.

**108 DIAMOND BLACKCAP 745U**

Cow +16025258 birth date: 2/9/2008 Tattoo: 745U  
HERO 6267 OF R R 2418#  
**HA IMAGE MAKER 0415#**  
H A RITO BLACKCAP 9038  
BR MIDLAND#  
**DIAMOND BLACKCAP P203**  
DIAMOND BLACKCAP M605

R R HERO 6267#  
R R EVERELDA ENTENSE 0413  
H 96 RITO 2100 7371  
H 96 BLACKCAP 3835  
TWIN VALLEY PRECISION E161#  
BR ROYAL LASS 7036-19  
VERMILION DATELINE 7078#  
DIAMOND BLACKCAP 188H

BW **+1.6** WW **+58** Milk **+28** YW **+108**

◇ Herd Tag 745U Marb **+27** RE **-02** \$B **45.62**

A daughter of the noted outcross sire HA Image Maker 0415 with YR 109. The dam is sired by the \$202,000 BR Midland with 4 WR 101 and 3 YR 105 combined with 3 IMF 155 and 3 REA 101. Bred AI to CONNEALY THUNDER due to calve January 23, 2010.

**109 DIAMOND TROJAN ERICA 458U**

Cow 16015138 birth date: 1/21/2008 Tattoo: 458U  
HERO 6267 OF R R 2418#  
**HA IMAGE MAKER 0415#**  
H A RITO BLACKCAP 9038  
ROCKN D AMBUSH 1531#  
**DIAMOND TROJAN ERICA 4111**  
DIAMOND TROJAN ERICA G807

R R HERO 6267#  
R R EVERELDA ENTENSE 0413  
H 96 RITO 2100 7371  
H 96 BLACKCAP 3835  
PARAMONT AMBUSH 2172#  
MS BLACKCAP BAND OF R D 1301  
G T MAXIMUM#  
BASIN TROJAN ERICA D S 637Y#

BW **+0.2** WW **+51** Milk **+25** YW **+91**

◇ Herd Tag 458U Marb **+28** RE **+11** \$B **41.58**

This bred heifer by HA Image Maker 0415 from the Trojan Erica family stems from a maternal grandam who records 5 WR 107, 3 YR 107, 44 IMF 109 and 44 REA 100. Two full sisters to the grandam are also donors who in turn produced the \$10,000 Diamond Justrite and the \$9,500 Diamond Payweight 738N who is used heavily in the Diamond Dot program and exported semen to Argentina. The grandam records 5 WR 107 and 3 YR 107 combined with 44 IMF 109 while the third dam records 8 WR 114 and 7 YR 111 with 122 head evaluated by ultrasound. AI bred to CONNEALY THUNDER due to calve January 25, 2010.

**110 DIAMOND BLACKBIRD 6U92**

Cow 16104354 birth date: 2/9/2008 Tattoo: 6U92  
H A IMAGE MAKER 0415#  
**HA IMAGE MAKER 6550**  
HA RITO LADY 3515  
C A FUTURE DIRECTION 5321#  
**DIAMOND BLACKBIRD S222**  
DIAMOND BLACKBIRD 2959

HERO 6267 OF R R 2418#  
H A RITO BLACKCAP 9038  
BR MIDLAND#  
H A 4167 LADY 1017  
G A R PRECISION 1680#  
C A MISS POWER FIX 308  
VERMILION PAYWEIGHT J847#  
DIAMOND BLACKBIRD 708J

BW **+1.2** WW **+54** Milk **+27** YW **+88**

◇ Herd Tag 6U92 Marb **+28** RE **+30** \$B **45.11**

A daughter of HA Image Maker 6550 with WR 103 produced as her dam's first calf. The dam is the result of the successful blending of CA Future Direction 5321 with Vermilion Payweight J847. Bred AI to 21AR ROUNDUP 7005 due to calve January 28, 2010.

# 111 STEVENSON ESTELLA 579U

Cow 16112667 birth date: 2/2/2008 Tattoo: 579U  
 BASIN MAX 602C# G T MAXIMUM#  
**21AR COAL BANK C014** BASIN ELINE ERICA 315U#  
 LEACHMAN LASS 5014# N BAR EMULATION EXT#  
 LEACHMAN LASS 3056  
 G A R INTEGRITY BON VIEW NEW DESIGN 1407#  
**STEVENSON ESTELLA 5601** G A R PRECISION 1019  
 STEVENSON ESTELLA M814 VERMILION YELLOWSTONE#  
 STEVENSON ESTELLA 6958

BW **+1.1** WW **+46** Milk **+19** YW **+85**

□ Herd Tag 579U Marb **+0.29** RE **+0.05** \$B **31.20**

A full sister to the dam of this heifer produced the \$32,500 Stevenson MoneyMaker 576T and she went on to sell one-half interest for \$40,000 for an \$80,000 valuation to 44 Farms. The grandam served as a Stevenson donor and she has 3 WR 105. This heifer is from the herd sire producing Estella family. Confirmed AI bred to 21AR ROUNDUP 7005 due to calve January 27, 2010.



# 112 STEVENSON DUCHESS 4338

Cow 16112766 birth date: 2/15/2008 Tattoo: 4338  
 BASIN MAX 602C# G T MAXIMUM#  
**21AR COAL BANK C014** BASIN ELINE ERICA 315U#  
 LEACHMAN LASS 5014# N BAR EMULATION EXT#  
 LEACHMAN LASS 3056  
 BOYD CAPTAIN 2067# SITZ ALLIANCE 6595#  
**STEVENSON DUCHESS 928P** BOYD FOREVER LADY 7120  
 STEVENSON DUCHESS 6219 R&S FORTUNE HUNTER M27  
 STEVENSON DUCHESS E136

BW **+4.3** WW **+47** Milk **+18** YW **+84**

□ Herd Tag 4338 Marb **+0.17** RE **-0.16** \$B **22.94**

This daughter of the proven calving-ease sire 21AR Coal Bank C014 has IMF 108 from a dam by Boyd Captain 2067. The grandam records 6 WR 101. Confirmed AI bred to 21AR ROUNDUP 7005 due to calve January 27, 2010.

# 113 STEVENSON LADY KELTON 522U

Cow 16112737 birth date: 2/12/2008 Tattoo: 522U  
 BASIN MAX 602C# G T MAXIMUM#  
**21AR COAL BANK C014** BASIN ELINE ERICA 315U#  
 LEACHMAN LASS 5014# N BAR EMULATION EXT#  
 LEACHMAN LASS 3056  
 BASIN PAYWEIGHT 537N VERMILION PAYWEIGHT J847#  
**STEVENSON LADY KELTON 3255** BASIN ERICA 384E#  
 STEVENSON LADY KELTON W39N STEVENSON STRUT L904  
 WILSAR LADY KELTON W26F

BW **+0.2** WW **+40** Milk **+17** YW **+81**

□ Herd Tag 522U Marb **+0.06** RE **+0.00** \$B **22.49**

This bred heifer from the Lady Kelton family is sired by 21AR Coal Bank C014 from a dam who is a granddaughter of Vermilion Payweight J847. Confirmed AI bred to 21AR ROUNDUP 7005 due to calve January 27, 2010.

# 114 STEVENSON JANNET 687U

Cow 16112483 birth date: 1/22/2008 Tattoo: 687U  
 BASIN MAX 602C# G T MAXIMUM#  
**21AR COAL BANK C014** BASIN ELINE ERICA 315U#  
 LEACHMAN LASS 5014# N BAR EMULATION EXT#  
 LEACHMAN LASS 3056  
 STEVENSON EXPEDITION 859K GARDENS EXPEDITION#  
**STEVENSON JANNET 5005** STEVENSON QUEEN 4058  
 STEVENSON JANNET 8700# STEVENSON BRUNO 561G#  
 STEVENSON JANNET 6988

BW **-1.1** WW **+42** Milk **+19** YW **+86**

□ Herd Tag 687U Marb **+0.40** RE **+0.08** \$B **42.06**

A low-birth weight high-marbling daughter of 21AR Coal Bank C014 with BR 83 combined with IMF 136 ranking her in the lowest 3% for BW. The grandam has 6 WR 106 and 6 YR 104 combined with 6 IMF 106 and 6 REA 110. Confirmed AI bred to 21AR ROUNDUP 7005 due to calve January 28, 2010.

# 115 DIAMOND ZARA 6218

Cow 16104580 birth date: 1/23/2008 Tattoo: 6218  
 BASIN MAX 602C# G T MAXIMUM#  
**21AR COAL BANK C014** BASIN ELINE ERICA 315U#  
 LEACHMAN LASS 5014# N BAR EMULATION EXT#  
 LEACHMAN LASS 3056  
 BASIN FUTURE DIRECTION 8833 C A FUTURE DIRECTION 5321#  
**R&S ZARA 3396** BASIN LUCY 178E  
 R&S ZARA 6613 TC MOONSHINE 001#  
 R&S ZARA 4166

BW **+3.2** WW **+52** Milk **+24** YW **+92**

◇ Herd Tag 6218 Marb **+0.18** RE **0** \$B **37.06**

A high-performing daughter of 21AR Coal Bank C014 with WR 116 and YR 108 produced as their dam's first calf. Bred AI to GAR ULTIMATE due to calve January 25, 2010.

# 116 DIAMOND ENCHANTRESS 585U

Cow 16016509 birth date: 2/8/2008 Tattoo: 585U  
 G T MAXIMUM# SCOTCH CAP#  
**BASIN MAX 602C#** GT MISS TRAVELER 58#  
 BASIN ELINE ERICA 315U# G D A R RAINMAKER 340#  
 BASIN ELINE ERICA 1313  
 ER FOCUS M244 ER FOCUS K189  
**DIAMOND ENCHANTRESS R234** ERISKAY OF ER J238#  
 BASIN ENCHANTRESS 8362 THREE TREES PRIME CUT 0145  
 BASIN ENCHANTRESS H619

BW **+0.1** WW **+41** Milk **+17** YW **+86**

◇ Herd Tag 585U Marb **+0.25** RE **+0.06** \$B **33.70**

This bred heifer is by the established Pathfinder Sire Basin Max 602C from the herd sire producing Enchantress family. This female ranks in the lowest 10% for BW. AI bred to 21AR ROUNDUP 7005 due to calve January 25, 2010.

# 117 DIAMOND VIXON 4U73

Cow pending birth date: 3/9/2008 Tattoo: 4U73  
 G T MAXIMUM# SCOTCH CAP#  
**BASIN MAX 602C#** GT MISS TRAVELER 58#  
 BASIN ELINE ERICA 315U# G D A R RAINMAKER 340#  
 BASIN ELINE ERICA 1313  
 BROOKS EXT 792# N BAR EMULATION EXT#  
**DIAMOND VIXON 6P42#** PRINCESS 4103 B C B R  
 BT VIXON 379K B T FREEWAY 91F  
 BT VIXON 286E

BW **+3.9** WW **+53** Milk **+26** YW **+97**

◇ Herd Tag 4U73 Marb **+0.34** RE **+0.10** \$B **45.90**

A full sister to a bull used in the Diamond Dot program as a yearling bull who went on to sell to Jim Kinsey of West Virginia. This daughter of Basin Max 602C has WR 118 and YR 117 combined with IMF 117 and REA 116 ranking her in the top 10% for both WW and YW. The dam of this heifer records 3 WR 111 and 3 YR 110 combined with 2 IMF 111 and 2 REA 105. Pasture bred to DIAMOND AMBUSH 5U28 carrying a heifer calf due to calve the last week of February 2010.



Reference  
Sire



Vermilion Payweight J847

## 118 STEVENSON ELGA 5818

Cow 16156139 birth date: 3/11/2008 Tattoo: 5818  
 VERMILION PAYWEIGHT J847# VERMILION DATELINE 7078#  
**BASIN PAYWEIGHT 025S** VERMILION LASS 7969  
 BASIN LUCY 3829 C A FUTURE DIRECTION 5321#  
 BASIN LUCY 178E  
 STEVENSON SILVERADO N195 C A FUTURE DIRECTION 5321#  
**STEVENSON ELGA 22R8** STEVENSON PRIDE 7371#  
 STEVENSON ELGA 6938# STEVENSON ROLLING THUNDER#  
 STEVENSON ELGA 4546#

BW **+2.4** WW **+49** Milk **+25** YW **+97**

□ Herd Tag 5818 Marb **+53** RE **+27** SB **54.85**  
 A solid performance heifer by Basin Payweight 025S with WR 102 and YR 107 combined with IMF 128 and REA 114. This heifer is backed by the herd sire producing Elga family. Confirmed AI bred to 21AR ROUNDUP 7005 due to calve January 27, 2010.

## 119 STEVENSON ELINE ERICA U111

Cow 16112730 birth date: 2/11/2008 Tattoo: U111  
 VERMILION PAYWEIGHT J847# VERMILION DATELINE 7078#  
**BASIN PAYWEIGHT S712 AK** VERMILION LASS 7969  
 DIAMOND BLACKCAP 307G BASIN RAINMAKER 2844#  
 BASIN BLACKCAP C S 815A  
 STEVENSON BRUNO 561G# STEVENSON ROYCE 741C#  
**STEVENSON ELINE ERICA 7271** JRS ENCHANTRESS 16A  
 STEVENSON ELINE ERICA 7388 KAPP ADVENTURE  
 STEVENSON ELINE ERICA 437C#

BW **+0.8** WW **+41** Milk **+25** YW **+76**

□ Herd Tag U111 Marb **+08** RE **-10** SB **22.38**  
 A member of the herd sire producing Eline Erica family sired by a son of Vermilion Payweight J847 from a dam by Stevenson Bruno 561G. Confirmed AI bred to 21AR ROUNDUP 7005 due to calve January 24, 2010.

## 120 DIAMOND ANNIE 8385

Cow 16120922 birth date: 3/6/2008 Tattoo: 8385  
 VERMILION PAYWEIGHT J847# VERMILION DATELINE 7078#  
**DIAMOND PAYWEIGHT 738N** VERMILION LASS 7969  
 DIAMOND TROJAN ERICA G272 G T MAXIMUM#  
 BASIN TROJAN ERICA D S 637Y#  
 DIAMOND AMBUSH 740L ROCKN D AMBUSH 1531#  
**DIAMOND ANNIE 911N** DIAMOND TROJAN ERICA G104  
 DIAMOND ANNIE 633J DIAMOND RAINMAKER 154E#  
 DIAMOND ANNIE 168F

BW **+1.7** WW **+44** Milk **+16** YW **+91**

◇ Herd Tag 8385 Marb **+35** RE **+26** SB **50.10**  
 This granddaughter of the Pathfinder Sire Vermilion Payweight J847 has YR 105 combined with REA 107. The solid producing dam records 4 BR 97 and 4 WR 100 combined with 3 YR 103, 3 IMF 114 and 3 REA 103. AI bred to 21AR ROUNDUP 7005 due to calve February 15, 2010.

## 121 DIAMOND PAMELA 8621

Cow 16101938 birth date: 1/27/2008 Tattoo: 8621  
 VERMILION PAYWEIGHT J847# VERMILION DATELINE 7078#  
**DIAMOND PAYLOAD 982S** VERMILION LASS 7969  
 DIAMOND BLACKCAP G283 BASIN RAINMAKER 2844#  
 BASIN BLACKCAP C S 815A  
 BASIN MAX 602C# G T MAXIMUM#  
**DIAMOND PAMELA S365** BASIN ELINE ERICA 315U#  
 DIAMOND PAMELA 3276 BROOKS EXT 792#  
 BASIN PAMELA 2072

BW **+1.3** WW **+55** Milk **+24** YW **+85**

◇ Herd Tag 8621 Marb **+16** RE **+22** SB **31.49**  
 A granddaughter of the Pathfinder Sires Vermilion Payweight J847 and Basin Max 602C with WR 107 and YR 102. The dam has 2 BR 98, 2 WR 105 and 1 YR 102. AI bred to GAR ULTIMATE due to calve January 28, 2010.

## 122 DIAMOND CLEATUS 289U

Cow 16120813 birth date: 4/23/2008 Tattoo: 289U  
 VERMILION PAYWEIGHT J847# VERMILION DATELINE 7078#  
**DIAMOND PAYWEIGHT 738N** VERMILION LASS 7969  
 DIAMOND TROJAN ERICA G272 G T MAXIMUM#  
 DIAMOND AMBUSH 866K BASIN TROJAN ERICA D S 637Y#  
**DIAMOND CLEATUS 2078** ROCKN D AMBUSH 1531#  
 KEYSTONE CLEATUS 0106 DIAMOND JANNET H909  
 BASIN MAX 3767  
 KEYSTONE CLEATUS 767

BW **+3.0** WW **+45** Milk **+23** YW **+89**

◇ Herd Tag 289U Marb **I+44** RE **I+30** SB **52.05**  
 This daughter of Diamond Payweight 738N is from a dam by Diamond Ambush 866K who left a tremendous set of daughters. This heifer has WR 105 from a dam with 4 WR 105, 3 YR 101, 3 IMF 113 and 3 REA 104. AI bred to DIAMOND JUSTICE 901S due to calve January 23, 2010.

## 123 DIAMOND MINIVER 684U

Cow 16104370 birth date: 2/12/2008 Tattoo: 684U  
 VERMILION PAYWEIGHT J847# VERMILION DATELINE 7078#  
**DIAMOND PAYLOAD 982S** VERMILION LASS 7969  
 DIAMOND BLACKCAP G283 BASIN RAINMAKER 2844#  
 BASIN BLACKCAP C S 815A  
 BASIN UP THE LIMIT C A FUTURE DIRECTION 5321#  
**DIAMOND MINIVER S490** BASIN CHLOE 813K  
 DIAMOND MINIVER P110 BASIN EXPEDITION 6241  
 DIAMOND MINIVER 749L

BW **+1.3** WW **+49** Milk **+24** YW **+80**

◇ Herd Tag 684U Marb **+30** RE **+53** SB **41.91**  
 This daughter of Diamond Payload 982S has an impressive individual REA of 121 produced as a first calf from a dam by Basin Up The Limit. Bred AI to 21AR ROUNDUP 7005 due to calve January 25, 2010.

## 124 DIAMOND WINK 4438

Cow 16110332 birth date: 2/26/2008 Tattoo: 4438  
 VERMILION PAYWEIGHT J847# VERMILION DATELINE 7078#  
**BASIN PAYWEIGHT 025S** VERMILION LASS 7969  
 BASIN LUCY 3829 C A FUTURE DIRECTION 5321#  
 BASIN LUCY 178E  
 KEYSTONE 616 WINK RITO 616 OF 4B20 6807#  
**KEYSTONE WINK 491** KEYSTONE GLITTER 478#  
 KEYSTONE BELL 113 LEACHMAN RIGHT TIME#  
 KEYSTONE BELL 1-7-4-416

BW **+2.8** WW **+53** Milk **+25** YW **+98**

◇ Herd Tag 4438 Marb **+36** RE **+04** SB **47.13**  
 This heifer combines WR 107 and YR 103 with IMF 108 sired by Basin Payweight 025S. The dam records 4 WR 105 and 3 YR 104. Pasture bred to DIAMOND STARDOM 3U68 carrying a bull calf due to calve the last week of February 2010.

**125** **DIAMOND JANNET 8512**  
 Cow 16020874 birth date: 2/7/2008 Tattoo: 8512  
 N BAR PRIME TIME D806# GARDENS PRIME TIME#  
**G T SHEAR FORCE** N BAR MISS EMULOUS A404  
 G T SISKIN 106# PLOWMAN 1627 OF MILLBRAE SAR#  
 G T ROSALITA 509  
 BASIN MAX 602C# G T MAXIMUM#  
**DIAMOND JANNET 386R** BASIN ELINE ERICA 315U#  
 DIAMOND JANNET 61N B/R NEW DESIGN 323#  
 BASIN GREYSTONE JANNET 6779

BW	<b>+2.4</b>	WW	<b>+47</b>	Milk	<b>+17</b>	YW	<b>+94</b>
----	-------------	----	------------	------	------------	----	------------

◇ Herd Tag 8512 Marb **+51** RE **+13** SB **44.76**  
 A featured by GT Shear Force with WR 104 and YR 102 combined with IMF 111 and REA 111. The dam is a daughter of Basin Max 602C with 2 IMF 129 and 2 REA 108. AI bred to GAR ULTIMATE due to calve January 28, 2010.

**126** **DIAMOND JANNET 6U42**  
 Cow 16032317 birth date: 1/19/2008 Tattoo: 6U42  
 N BAR PRIME TIME D806# GARDENS PRIME TIME#  
**G T SHEAR FORCE** N BAR MISS EMULOUS A404  
 G T SISKIN 106# PLOWMAN 1627 OF MILLBRAE SAR#  
 G T ROSALITA 509  
 FV NEW DIMENSION P142 B/R NEW DIMENSION 7127#  
**DIAMOND JANNET S344** G A R PRECISION 939  
 DIAMOND JANNET 3953 GARDENS EXPEDITION#  
 DIAMOND JANNET J302

BW	<b>+3.3</b>	WW	<b>+43</b>	Milk	<b>+18</b>	YW	<b>+93</b>
----	-------------	----	------------	------	------------	----	------------

◇ Herd Tag 6U42 Marb **+49** RE **+11** SB **48.18**  
 This bred heifer by the noted GT Shear Force has an IMF of 114 as her dam's first calf. This female is from the noted Greystone Jannet family. Bred AI to 21AR BIG SPREAD 7012A due to calve January 26, 2010.

**127** **DIAMOND VIXON 6U79**  
 Cow pending birth date: 2/14/2008 Tattoo: 6U79  
 N BAR PRIME TIME D806# GARDENS PRIME TIME#  
**G T SHEAR FORCE** N BAR MISS EMULOUS A404  
 G T SISKIN 106# PLOWMAN 1627 OF MILLBRAE SAR#  
 G T ROSALITA 509  
 BASIN MAX 602C# G T MAXIMUM#  
**DIAMOND VIXON 4S75** BASIN ELINE ERICA 315U#  
 DIAMOND VIXON 8P45 BROOKS EXT 792#  
 BT VIXON 379K

BW	<b>+2.5</b>	WW	<b>+54</b>	Milk	<b>+22</b>	YW	<b>+104</b>
----	-------------	----	------------	------	------------	----	-------------

◇ Herd Tag 6U79 Marb **+50** RE **-.01** SB **46.56**  
 A special attraction female blending GT Shear Force with Basin Max 602C with WR 112 and YR 110 combined with IMF 128 as her dam's first calf. The grandam records 3 WR 109 and 3 YR 109 combined with 2 IMF 108 and 2 REA 102. Pasture bred to DIAMOND AMBUSH 5U29 due to calve the last week of March 2010.

**128** **DIAMOND PAMELA 242U**  
 Cow 16015024 birth date: 1/23/2008 Tattoo: 242U  
 N BAR PRIME TIME D806# GARDENS PRIME TIME#  
**G T SHEAR FORCE** N BAR MISS EMULOUS A404  
 G T SISKIN 106# PLOWMAN 1627 OF MILLBRAE SAR#  
 G T ROSALITA 509  
 BROOKS EXT 792# N BAR EMULATION EXT#  
**DIAMOND PAMELA 078M** PRINCESS 4103 B C B R  
 DIAMOND PAMELA 513K SUMMITCREST PRIME CUT 1G42#  
 DIAMOND PAMELA 190E

BW	<b>+0.4</b>	WW	<b>+46</b>	Milk	<b>+18</b>	YW	<b>+88</b>
----	-------------	----	------------	------	------------	----	------------

◇ Herd Tag 242U Marb **+38** RE **+29** SB **42.13**  
 This bred heifer by the ABS Global sire GT Shear Force has REA 118. The dam records 4 IMF 106 and 4 REA 105. Pasture bred to DIAMOND JUSTICE U568 due to calve the last week of March 2010.

**129** **STEVENSON ELEMERE 3718**  
 Cow 16112858 birth date: 2/16/2008 Tattoo: 3718  
 BOYD ON TARGET 1083 S A F 598 BANDO 5175#  
**STEVENSON MONEYMAKER R185** BOYD FOREVER LADY 7095  
 STEVENSON CLOVA PRIDE L888# VDAR AMBUSH 2478  
 STEVENSON CLOVA PRIDE 712H  
 SHADY BROOK EMULATION 548J FINKS 5522-6148#  
**STEVENSON ELEMERE N132** SITZ EVERELDA ENTENSE 1137  
 STEVENSON ELEMERE 611L BASIN MAX 602C#  
 JRS ELEMERE 31B

BW	<b>+2.9</b>	WW	<b>+47</b>	Milk	<b>+23</b>	YW	<b>+87</b>
----	-------------	----	------------	------	------------	----	------------

□ Herd Tag 3718 Marb **+39** RE **-.02** SB **35.24**  
 This daughter of the \$810,000 Stevenson MoneyMaker R185 is from a solid producing dam who is a granddaughter of Finks 5522-6148 and Basin Emulation 602C with 4 WR 100. Confirmed AI bred to 21AR ROUNDUP 7005 due to calve January 27, 2010.

**130** **STEVENSON SASSY U372**  
 Cow 16112878 birth date: 2/22/2008 Tattoo: U372  
 BOYD ON TARGET 1083 S A F 598 BANDO 5175#  
**STEVENSON MONEYMAKER R185** BOYD FOREVER LADY 7095  
 STEVENSON CLOVA PRIDE L888# VDAR AMBUSH 2478  
 STEVENSON CLOVA PRIDE 712H  
 RR 616 RITO 1810 RITO 616 OF 4B20 6807#  
**STEVENSON SASSY N126** ERICA LASSIE OF R R 5448#  
 STEVENSON SASSY W37L STEVENSON BRUNO 561G#  
 WILSAR SASSY W4F#

BW	<b>+3.7</b>	WW	<b>+46</b>	Milk	<b>+21</b>	YW	<b>+87</b>
----	-------------	----	------------	------	------------	----	------------

□ Herd Tag U372 Marb **+31** RE **+12** SB **40.91**  
 A daughter of the \$810,000 Stevenson MoneyMaker R185 with an impressive individual REA ratio of 113 combined with a YR of 103. Confirmed AI bred to 21AR ROUNDUP 7005 due to calve January 27, 2010.

**131** **STEVENSON CLOVA PRIDE 2758**  
 Cow 16112443 birth date: 1/17/2008 Tattoo: 2758  
 BOYD ON TARGET 1083 S A F 598 BANDO 5175#  
**STEVENSON MONEYMAKER R185** BOYD FOREVER LADY 7095  
 STEVENSON CLOVA PRIDE L888# VDAR AMBUSH 2478  
 STEVENSON CLOVA PRIDE 712H  
 MRG 604G OF PARTNER BASIN EMULATION 178C#  
**STEVENSON CLOVA PRIDE 5322** M R G MAUDIE 93G  
 STEVENSON CLOVA PRIDE 487E IMPACT 2000 G G#  
 JRS CLOVA PRIDE 945Z

BW	<b>-1.3</b>	WW	<b>+45</b>	Milk	<b>+20</b>	YW	<b>+88</b>
----	-------------	----	------------	------	------------	----	------------

□ Herd Tag 2758 Marb **+31** RE **+0.08** SB **41.00**  
 This bred heifer by Stevenson MoneyMaker R185 is from the herd sire producing Clova Pride family. This heifer ranks in the lowest 2% for BW with BR 78. Confirmed AI bred to 21AR ROUNDUP 7005 due to calve January 23, 2010.

**132** **STEVENSON IMPACT U528**  
 Cow 16156203 birth date: 3/8/2008 Tattoo: U528  
 CAR DUKE 104# CAR TRACKER 904#  
**STEVENSON DUKE 4186** C A R MISS RAINDANCER 421#  
 STEVENSON VIXON P298 C A FUTURE DIRECTION 5321#  
 STEVENSON VIXON 62M8  
 BOYD ON TARGET 1083 S A F 598 BANDO 5175#  
**STEVENSON IMPACT 4865** BOYD FOREVER LADY 7095  
 STEVENSON IMPACT 609D IMPACT 2001 G G#  
 JRS ENCHANTRESS 377B

BW	<b>+5.4</b>	WW	<b>+59</b>	Milk	<b>+26</b>	YW	<b>+100</b>
----	-------------	----	------------	------	------------	----	-------------

□ Herd Tag U528 Marb **+21** RE **+16** SB **44.73**  
 A high-indexing daughter of Stevenson Duke 4186 with WR 107 and YR 104. The dam is a daughter of Boyd On Target 1083 with 2 WR 105 and 2 YR 102 combined with 2 REA 104. Confirmed AI bred to 21AR ROUNDUP 7005 due to calve January 26, 2010.



Reference  
Sire



Stevenson Bullseye 3R11

### 133 STEVENSON CLOVA PRIDE 595U

Cow 16112481 birth date: 1/22/2008 Tattoo: 595U  
 BOYD ON TARGET 1083 S A F 598 BANDO 5175#  
**STEVENSON BULLSEYE 3R11** BOYD FOREVER LADY 7095  
 STEVENSON CLOVA PRIDE 636N# GARDENS EXPEDITION#  
 STEVENSON CLOVA PRIDE 4536  
 W C C SPECIAL DESIGN L309# BON VIEW NEW DESIGN 878#  
**STEVENSON CLOVA PRIDE 22R1** N BAR PRIMROSE 2424  
 STEVENSON CLOVA PRIDE L901 ROCKN D AMBUSH 1531#  
 STEVENSON CLOVA PRIDE 7229

BW **+0.5** WW **+46** Milk **+21** YW **+92**

□ Herd Tag 595U Marb **+0.33** RE **+0.05** SB **40.63**

A granddaughter of the prolific and high income-producing donor Stevenson Clova Pride L901 with YR 102 combined with REA 105 as her dam's first calf. The dam of this heifer is a maternal sister to the three top-selling heifers of the 2008 sale. Confirmed AI bred to 21AR ROUNDUP 7005 due to calve January 29, 2010.

### 134 STEVENSON ZARA 598U

Cow 16112595 birth date: 1/28/2008 Tattoo: 598U  
 BOYD ON TARGET 1083 S A F 598 BANDO 5175#  
**STEVENSON BULLSEYE 3R11** BOYD FOREVER LADY 7095  
 STEVENSON CLOVA PRIDE 636N# GARDENS EXPEDITION#  
 STEVENSON CLOVA PRIDE 4536  
 W C C SPECIAL DESIGN L309# BON VIEW NEW DESIGN 878#  
**STEVENSON ZARA 5005** N BAR PRIMROSE 2424  
 STEVENSON ZARA 5M40 ROCKN D AMBUSH 1531#  
 STEVENSON ZARA 354#

BW **+0.8** WW **+46** Milk **+21** YW **+82**

□ Herd Tag 598U Marb **+0.29** RE **-0.08** SB **31.65**

This daughter of Stevenson Bullseye 3R11 is backed by low-birth weight genetics fortified by the herd sire producing Zara family. Confirmed AI bred to 21AR ROUNDUP 7005 due to calve January 27, 2010.

### 135 STEVENSON CLOVA PRIDE 209S

Cow 16113753 birth date: 1/29/2008 Tattoo: 209S  
 BOYD ON TARGET 1083 S A F 598 BANDO 5175#  
**STEVENSON ON TARGET 1916** BOYD FOREVER LADY 7095  
 FSHK PRIDE 180# SITZ ALLIANCE 6595#  
 FSHK PRIDE 725  
 SITZ IMF 7839# SITZ ALLIANCE 6595#  
**STEVENSON CLOVA PRIDE 709M** SITZ ELSIEMERE 3648  
 STEVENSON CLOVA PRIDE 219C G T MAXIMUM#  
 J R S CLOVA PRIDE 919X#

BW **+2.0** WW **+46** Milk **+19** YW **+94**

□ Herd Tag 209S Marb **+0.40** RE **-0.01** SB **44.45**

This bred heifer from the herd sire producing Clova Pride family records IMF 105. This heifer traces to a third dam who earned 7 WR 111 and 7 YR 107. Confirmed AI bred to 21AR ROUNDUP 7005 due to calve January 23, 2010.

### 136 DIAMOND BELLE 8564

Cow 16012271 birth date: 2/18/2008 Tattoo: 8564  
 C A FUTURE DIRECTION 5321# G A R PRECISION 1680#  
**BASIN UP THE LIMIT** C A MISS POWER FIX 308  
 BASIN CHLOE 813K GARDENS EXPEDITION#  
 BASIN CHLOE 5248  
 DIAMOND DATELINE 5072 VERMILION DATELINE 7078#  
**DIAMOND BELLE 243R** DIAMOND BLACKCAP 188H  
 DIAMOND BELLE 088M BROOKS EXT 792#  
 DIAMOND BELLE 203K

BW **+2.3** WW **+46** Milk **+28** YW **+87**

◇ Herd Tag 8564 Marb **+0.71** RE **+0.22** SB **54.44**

A daughter of Basin Up The Limit with an impressive WR 112 and YR 113 combined with IMF 136. The dam records 3 WR 107 and 2 YR 110 combined with 2 IMF 120. Pasture bred to DIAMOND JUSTICE U568 due to calve last week of February 2010.

### 137 DIAMOND BLACK LADY 8605

Cow 16110273 birth date: 2/20/2008 Tattoo: 8605  
 C A FUTURE DIRECTION 5321# G A R PRECISION 1680#  
**BASIN UP THE LIMIT** C A MISS POWER FIX 308  
 BASIN CHLOE 813K GARDENS EXPEDITION#  
 BASIN CHLOE 5248  
 BASIN MAX 602C# G T MAXIMUM#  
**DIAMOND BLACK LADY 6462** BASIN ELINE ERICA 315U#  
 DIAMOND BLACK LADY 122P BASIN DATELINE 752L  
 DIAMOND BLACK LADY L507

BW **+2.7** WW **+40** Milk **+25** YW **+80**

◇ Herd Tag 8605 Marb **+0.72** RE **+0.29** SB **52.79**

A blending of the proven sires Basin Up The Limit and Basin Max 602C with WR 104 and YR 101 combined with IMF 143 and REA 107 as her dam's first calf. AI bred to 21AR BIG SPREAD 7012A due to calve January 27, 2010.

### 138 DIAMOND BLACKCAP 8607

Cow 16030025 birth date: 1/19/2008 Tattoo: 8607  
 C A FUTURE DIRECTION 5321# G A R PRECISION 1680#  
**BASIN FRANCHISE P142** C A MISS POWER FIX 308  
 BASIN CHLOE 812L GARDENS EXPEDITION#  
 BASIN CHLOE 6198  
 BASIN MAX 602C# G T MAXIMUM#  
**DIAMOND BLACKCAP 156S** BASIN ELINE ERICA 315U#  
 DIAMOND BLACKCAP L141 BROOKS EXT 792#  
 DIAMOND BLACKCAP 154F

BW **+1.6** WW **+47** Milk **+27** YW **+93**

◇ Herd Tag 8607 Marb **+0.53** RE **+0.24** SB **51.78**

This daughter of Basin Franchise P142 has WR 105 and YR 112 combined with IMF 153 selling as a special feature from a dam by Basin Max 602C. The grandam records 6 WR 104 and 4 YR 105 combined with 4 IMF 109 and 4 REA 105. Bred AI to 21AR BIG SPREAD 7012A due January 24, 2010.

### 139 DIAMOND ENCHANTRESS U804

Cow +16244248 birth date: 2/24/2008 Tattoo: U804  
 C A FUTURE DIRECTION 5321# G A R PRECISION 1680#  
**BASIN FRANCHISE P142** C A MISS POWER FIX 308  
 BASIN CHLOE 812L GARDENS EXPEDITION#  
 BASIN CHLOE 6198  
 VERMILION PAYWEIGHT J847# VERMILION DATELINE 7078#  
**DIAMOND ENCHANTRESS 2925** VERMILION LASS 7969  
 DIAMOND ENCHANTRESS 7699 BASIN EXTRA 740 218G  
 DIAMOND ENCHANTRESS 153C

BW **I+1.8** WW **I+52** Milk **I+26** YW **I+94**

◇ Herd Tag U804 Marb **I+0.21** RE **I+0.34** SB **44.79**

A daughter of the proven low-birth weight sire Basin Franchise P142 from the herd sire producing Enchantress family. This heifer has IMF 116 from a dam with 3 WR 106 and 3 YR 105. Bred AI to 21AR BIG SPREAD 7012A due to calve February 4, 2010.

# 140 STEVENSON PRIDE LADY U571

Cow 16156033 birth date: 3/9/2008 Tattoo: U571  
 KMK ALLIANCE 6595 I87 SITZ ALLIANCE 6595#  
**KMK ALLIANCE I87 N24** G A R EXT 916#  
 KMK EVERELDA ENTENSE J495 S A F 598 BANDO 5175#  
 GARTH G256 BALDRIDGE NOTCH A C#  
**STEVENSON PRIDE LADY R155** G A R EXT 614  
 STEVENSON PRIDE LADY 9221 STEVENSON MAX J180  
 STEVENSON PRIDE LADY J701 STEVENSON PRIDE LADY J701

BW **+2.5** WW **+57** Milk **+23** YW **+96**

□ Herd Tag U571 Marb **+1.5** RE **+0.7** \$B **37.79**

An elite EPD female ranking in the top 3% for WW and the top 10% for YW from the proven Pride Lady family. This heifer has BR 89 combined with WR 100 and YR 102 along with REA 114 from a dam with 2 WR 107 and 2 YR 107 along with 2 REA 108. Confirmed AI bred to 21AR ROUNDUP 7005 due to calve January 26, 2010.

# 141 STEVENSON ELDORENE U253

Cow 16156080 birth date: 3/23/2008 Tattoo: U253  
 RITO 112 OF 2536 RITO 616# RITO 616 OF 4B20 6807#  
**STEVENSON RITO 3926** G A R PRECISION 2536  
 STEVENSON CLOVA PRIDE 7473 GARDENS EXPEDITION#  
 STEVENSON CLOVA PRIDE 404G  
 A A R RAMBLER 779# A A R RAMBLER 356  
**STEVENSON ELDORENE M991** A A R BLACKBIRD 582  
 STEVENSON ELDORENE 771J HERITAGE OF DONAMERE 1315  
 STEVENSON ELDORENE 554C

BW **+2.5** WW **+48** Milk **+21** YW **+91**

□ Herd Tag U253 Marb **+1.8** RE **-0.6** \$B **32.87**

A granddaughter of Rito 112 of 2536 Rito 616 from a dam by the noted AAR Rambler 779. Confirmed AI bred to 21AR ROUNDUP 7005 due to calve January 23, 2010.

# 142 STEVENSON ERICA U650

Cow 16122616 birth date: 3/6/2008 Tattoo: U650  
 S S OBJECTIVE T510 OT26# S S TRAVELER 6807 T510#  
**STEVENSON OBJECTIVE J9S** S S MISS RITA R011 7R8  
 L L R SARAH TRAVELER# F A R MUSCLES 521  
 T J H BLACKCAP 8054  
 BOYD CAPTAIN 2067#  
**STEVENSON ERICA S366** BOYD FOREVER LADY 7120  
 STEVENSON ERICA 13N1 BROOKS EXT 792#  
 STEVENSON ERICA 857L

BW **+1.5** WW **+48** Milk **+25** YW **+75**

□ Herd Tag U650 Marb **+1.0** RE **+0.05** \$B **22.57**

This bred heifer is a granddaughter of the extreme EPD sire SS Objective T510 OT26 from a dam by the proven sire Boyd Captain 2067. Confirmed AI bred to 21AR ROUNDUP 7005 due to calve January 24, 2010.

# 143 STEVENSON ELINE ERICA R252U

Cow 16112970 birth date: 2/28/2008 Tattoo: R252U  
 GARTH G256 BALDRIDGE NOTCH A C#  
**STEVENSON CATTLEMAN R142** G A R EXT 614  
 STEVENSON LUCY 9461 BASIN MAX 602C#  
 STEVENSON LUCY 796J  
 VERMILION YELLOWSTONE# VERMILION DATELINE 7078#  
**STEVENSON ELINE ERICA R248** VERMILION B JESTRESS 3912  
 STEVENSON ELINE ERICA M928 A A R RAMBLER 779#  
 STEVENSON ELINE ERICA 5479

BW **+2.8** WW **+52** Milk **+16** YW **+94**

□ Herd Tag R252U Marb **+0.22** RE **+0.19** \$B **40.41**

A daughter of the ORlgen and ABS Global featured sire Stevenson Cattleman R142 who was a \$25,000 past sale feature who enjoyed international interest with excellent customer satisfaction from semen exported to both New Zealand and Australia. This heifer has REA 110 from the noted Eline Erica family. Confirmed AI bred to 21AR ROUNDUP 7005 due to calve January 27, 2010.

# 144 DIAMOND TROJAN ERICA 07U7

Cow +16120994 birth date: 3/1/2008 Tattoo: 07U7  
 C A FUTURE DIRECTION 5321# G A R PRECISION 1680#  
**BASIN FRANCHISE P142** C A MISS POWER FIX 308  
 BASIN CHLOE 812L GARDENS EXPEDITION#  
 BASIN CHLOE 6198  
 VERMILION PAYWEIGHT J847# VERMILION DATELINE 7078#  
**DIAMOND TROJAN ERICA 738P** VERMILION LASS 7969  
 DIAMOND TROJAN ERICA G272 G T MAXIMUM#  
 BASIN TROJAN ERICA D S 637Y#

BW **I+3.0** WW **I+54** Milk **I+28** YW **I+99**

◇ Herd Tag 07U7 Marb **I+3.8** RE **I+5.5** \$B **55.60**

This daughter of Basin Franchise P142 was produced from a full sister to Diamond Payweight 738N. The dam of this heifer has 1 WR 117 and 1 YR 111 combined with 19 IMF 110 and 19 REA 105 from the herd sire producing Trojan Erica family. Bred AI to 21AR BIG SPREAD 7012A due to calve January 26, 2010.

# 145 DIAMOND TROJAN ERICA 9U29

Cow + pending birth date: 3/6/2008 Tattoo: 9U29  
 C A FUTURE DIRECTION 5321# G A R PRECISION 1680#  
**BASIN FRANCHISE P142** C A MISS POWER FIX 308  
 BASIN CHLOE 812L GARDENS EXPEDITION#  
 BASIN CHLOE 6198  
 BASIN MAX 602C# G T MAXIMUM#  
**DIAMOND TROJAN ERICA 924L** BASIN ELINE ERICA 315U#  
 DIAMOND TROJAN ERICA 777J DIAMOND RAINMAKER 154E#  
 DIAMOND TROJAN ERICA 160G

BW **I+1.5** WW **I+47** Milk **I+22** YW **I+88**

◇ Herd Tag 9U29 Marb **I+5.4** RE **I+2.9** \$B **48.88**

The result of the successful blending of Basin Franchise P142 and Basin Max 602C from the productive Trojan Erica family. The dam records 4 WR 107 and 4 YR 102 combined with 65 IMF 107 and 65 REA 104. Bred AI to 21AR BIG SPREAD 7012A due to calve February 14, 2010.

# 146 DIAMOND TROJAN ERICA 0U18

Cow + pending birth date: 3/6/2008 Tattoo: 0U18  
 C A FUTURE DIRECTION 5321# G A R PRECISION 1680#  
**BASIN FRANCHISE P142** C A MISS POWER FIX 308  
 BASIN CHLOE 812L GARDENS EXPEDITION#  
 BASIN CHLOE 6198  
 BASIN MAX 602C# G T MAXIMUM#  
**DIAMOND TROJAN ERICA 924L** BASIN ELINE ERICA 315U#  
 DIAMOND TROJAN ERICA 777J DIAMOND RAINMAKER 154E#  
 DIAMOND TROJAN ERICA 160G

BW **I+1.5** WW **I+47** Milk **I+22** YW **I+88**

◇ Herd Tag 0U18 Marb **I+5.4** RE **I+2.9** \$B **48.88**

A flush sister to the previous heifer sired by Basin Franchise P142 from a donor dam by Basin Max 602C. The dam of this heifer has 4 WR 107, 4 YR 102, 65 IMF 107 and 65 REA 104. Bred AI to 21AR BIG SPREAD 7012A due to calve February 14, 2010.

# 147 DIAMOND ENCHANTRESS US05

Cow +16244249 birth date: 2/26/2008 Tattoo: US05  
 C A FUTURE DIRECTION 5321# G A R PRECISION 1680#  
**BASIN FRANCHISE P142** C A MISS POWER FIX 308  
 BASIN CHLOE 812L GARDENS EXPEDITION#  
 BASIN CHLOE 6198  
 VERMILION PAYWEIGHT J847# VERMILION DATELINE 7078#  
**DIAMOND ENCHANTRESS 2925** VERMILION LASS 7969  
 DIAMOND ENCHANTRESS 7699 BASIN EXTRA 740 218G  
 DIAMOND ENCHANTRESS 153C

BW **I+1.8** WW **I+52** Milk **I+26** YW **I+94**

◇ Herd Tag US05 Marb **I+1.6** RE **I+4.4** \$B **42.59**

A bred heifer combining the low-birth weight and high-marbling of Basin Franchise P142 with the high-growth genetics of Vermilion Payweight J847. The dam of this heifer has 3 WR 106 and 3 YR 105 and has served as an embryo donor. Pasture bred to DIAMOND STARDOM 3U68 due to calve the last week of March 2010.



Reference  
Sire



Stevenson CE Deluxe 1914

## 151 DIAMOND BLACKCAP LADY U633

Cow 16101944 birth date: 1/29/2008 Tattoo: U633  
 C A FUTURE DIRECTION 5321# G A R PRECISION 1680#  
**STEVENSON CE DELUXE 1914** C A MISS POWER FIX 308  
 FSHK PRIDE 180# SITZ ALLIANCE 6595#  
 FSHK PRIDE 725  
 VERMILION PAYWEIGHT J847# VERMILION DATELINE 7078#  
**DIAMOND BLACKCAP LADY 6427** VERMILION LASS 7969  
 DIAMOND BLACKCAP LADY P465 BASIN MAX 602C#  
 BASIN BLACKCAP LADY 219H

BW **+3.2** WW **+58** Milk **+29** YW **+105**

◇ Herd Tag U633 Marb **+62** RE **+28** \$B **58.61**

This heifer has WR 111 and YR 106 combined with IMF 122 and REA 115 from the Blackcap Lady family. This female by Stevenson CE Deluxe 1914 is from a dam backed by the successful blending of Vermilion Payweight J847 and Basin Max 602C. Bred AI to 21AR ROUNDUP 7005 due to calve January 27, 2010.

## 148 DIAMOND ELINE ERICA 4018

Cow 16110298 birth date: 2/22/2008 Tattoo: 4018  
 C A FUTURE DIRECTION 5321# G A R PRECISION 1680#  
**STEVENSON CE DELUXE 1914** C A MISS POWER FIX 308  
 FSHK PRIDE 180# SITZ ALLIANCE 6595#  
 FSHK PRIDE 725  
 BASIN PAYWEIGHT 724M VERMILION PAYWEIGHT J847#  
**DIAMOND ELINE ERICA 4135** BASIN LUCY 584G#  
 DIAMOND ELINE ERICA 6721 BASIN MAX 602C#  
 BASIN ELINE ERICA 6321

BW **-0.7** WW **+52** Milk **+25** YW **+89**

◇ Herd Tag 4018 Marb **+44** RE **+18** \$B **45.68**

This bred heifer from the Eline Erica family is by Stevenson CE Deluxe 1914 ranking in the lowest 4% for BW with an attractive growth and carcass combination. Bred AI to 21AR ROUNDUP 7005 due to calve January 25, 2010.

## 152 DIAMOND RACHEL U469

Cow 16110258 birth date: 2/18/2008 Tattoo: U469  
 C A FUTURE DIRECTION 5321# G A R PRECISION 1680#  
**STEVENSON CE DELUXE 1914** C A MISS POWER FIX 308  
 FSHK PRIDE 180# SITZ ALLIANCE 6595#  
 FSHK PRIDE 725  
 GARDENS EXPEDITION# N BAR EMULATION EXT#  
**DIAMOND RACHEL 861P** GREEN GARDEN GINA 2268 S2  
 BASIN RACHEL 300G BASIN AMBUSH 3905#  
 BASIN RACHEL C365

BW **+0.0** WW **+50** Milk **+28** YW **+97**

◇ Herd Tag U469 Marb **I+57** RE **I+16** \$B **50.24**

A Rachel heifer by Stevenson CE Deluxe 1914. The dam has 2 BR 98 combined with 2 WR 104 and 1 YR 108 along with 1 IMF 109 and 1 REA 126. The grandam is a former donor with 5 WR 111 and 5 YR 105. Pasture bred to DIAMOND STARDOM 3U68 due to calve the last week of February 2010.

## 149 DIAMOND PRIDE U457

Cow 16110313 birth date: 2/23/2008 Tattoo: U457  
 C A FUTURE DIRECTION 5321# G A R PRECISION 1680#  
**STEVENSON CE DELUXE 1914** C A MISS POWER FIX 308  
 FSHK PRIDE 180# SITZ ALLIANCE 6595#  
 FSHK PRIDE 725  
 VERMILION PAYWEIGHT J847# VERMILION DATELINE 7078#  
**DIAMOND PRIDE P277** VERMILION LASS 7969  
 DIAMOND PRIDE 819M SUMMITCREST DIAMOND OK24  
 DIAMOND PRIDE 532H

BW **+1.1** WW **+55** Milk **+26** YW **+101**

◇ Herd Tag U457 Marb **+58** RE **+26** \$B **54.21**

A blending of Stevenson CE Deluxe 1914 and Vermilion Payweight J847. This heifer recorded IMF 119 from a dam with 3 BR 94, 3 WR 101. Bred AI to 21AR ROUNDUP 7005 due to calve January 28, 2010.

## 153 DIAMOND EMULOUS PRIDE U415

Cow 16120972 birth date: 3/2/2008 Tattoo: U415  
 C A FUTURE DIRECTION 5321# G A R PRECISION 1680#  
**STEVENSON CE DELUXE 1914** C A MISS POWER FIX 308  
 FSHK PRIDE 180# SITZ ALLIANCE 6595#  
 FSHK PRIDE 725  
 VERMILION PAYWEIGHT J847# VERMILION DATELINE 7078#  
**DIAMOND EMULOUS PRIDE P759** VERMILION LASS 7969  
 DIAMOND EMULOUS PRIDE 312J DIAMOND RAINMAKER 154E#  
 DIAMOND EMULOUS PRIDE 816C#

BW **+3.2** WW **+61** Milk **+30** YW **+111**

◇ Herd Tag U415 Marb **+60** RE **+29** \$B **60.65**

This high-indexing heifer is from the successful blending of Stevenson CE Deluxe 1914 and Vermilion Payweight J847 with WR 111 and YR 111 combined with IMF 137 and RE 110 to rank in the top 1% for WW and YW while ranking in the top 2% for Milk and the top 10% for Marbling with a \$B in the top 4%. The dam records 3 WR 109 and 3 YR 107 combined with 3 IMF 115 and 3 REA 107. Pasture bred to DIAMOND IMAGE MAKER 32U9 due to calve the last week of March 2010.

## 150 DIAMOND JANNET U647

Cow 16030048 birth date: 1/22/2008 Tattoo: U647  
 C A FUTURE DIRECTION 5321# G A R PRECISION 1680#  
**STEVENSON CE DELUXE 1914** C A MISS POWER FIX 308  
 FSHK PRIDE 180# SITZ ALLIANCE 6595#  
 FSHK PRIDE 725  
 VERMILION PAYWEIGHT J847# VERMILION DATELINE 7078#  
**DIAMOND JANNET 259S** VERMILION LASS 7969  
 DIAMOND JANNET 2802# J W JURRITE 16#  
 DIAMOND JANNET 531H

BW **+4.0** WW **+63** Milk **+30** YW **+112**

◇ Herd Tag U647 Marb **+63** RE **+28** \$B **61.64**

A high-indexing bred heifer with WR 116 and YR 110 combined with IMF 125 and RE 105. This heifer is a three-quarter sister to the previous heifer produced as her dam's first calf. The grandam records 5 WR 106 and 4 YR 108. Bred AI to 21AR ROUNDUP 7005 due to calve January 28, 2010.

## 154 STEVENSON BLUEBIRD U151

Cow 16156060 birth date: 3/16/2008 Tattoo: U151  
 S A V 8180 TRAVELER 004# SITZ TRAVELER 8180#  
**STEVENSON TRAVELER 4106** BOYD FOREVER LADY 8003  
 STEVENSON ELEMERE P132 C A FUTURE DIRECTION 5321#  
 STEVENSON ELEMERE 611L  
 STEVENSON MAX J180 BASIN MAX 602C#  
**STEVENSON BLUEBIRD LASS 9011** BLACK TOOTH LADY B 380#  
 STEVENSON BLUEBIRD LASS 341J BASIN RAINMAKER 654X#  
 J R S BLUEBIRD LASS 252Y

BW **+0.9** WW **+38** Milk **+22** YW **+74**

□ Herd Tag U151 Marb **+29** RE **+06** \$B **27.15**

A granddaughter of the Pathfinder Sire SAV 8180 Traveler 004 from a long-time Stevenson cow family. Confirmed AI bred to 21AR ROUNDUP 7005 due to calve January 25, 2010.

**155****STEVENSON ELGA 369S**

Cow 16112735 birth date: 2/11/2008 Tattoo: 3698  
 BON VIEW NEW DESIGN 1407# B/R NEW DESIGN 036#  
**SHAMROCK NEW DESIGN 1793** BON VIEW PRIDE 664  
 SHAMROCK BEEBE QUEEN 460 E1L S A F FOCUS OF E R#  
 T A R BEEBE QUEEN 576 E26D#  
 STEVENSON STELLAR 084 J L B EXACTO 416#  
**STEVENSON ELGA N711** AHLGREN ESTELLA 2758 E T E#  
 STEVENSON ELGA 991G STEVENSON FORTUNE 425C#  
 J R S ELGA 495W

BW **+1.5** WW **+40** Milk **+28** YW **+75**

□ Herd Tag 3698 Marb **+38** RE **-.01** SB **33.42**

A bred heifer from the same family as the featured Lot 4 female as well as Stevenson Benchmark N190, the long-time high-marbling EPD leader. This heifer has RE 108. Confirmed AI bred to 21AR ROUNDUP 7005 due to calve January 26, 2010.

**156****STEVENSON ELINE ERICA 386S**

Cow 16112776 birth date: 2/16/2008 Tattoo: 3868  
 BON VIEW NEW DESIGN 1407# B/R NEW DESIGN 036#  
**SHAMROCK NEW DESIGN 1793** BON VIEW PRIDE 664  
 SHAMROCK BEEBE QUEEN 460 E1L S A F FOCUS OF E R#  
 T A R BEEBE QUEEN 576 E26D#  
 BT PEACEKEEPER 653L SITZ TRAVELER 6802#  
**STEVENSON ELINE ERICA N974** BT EVERELDA ENTENSE 567H  
 STEVENSON ELINE ERICA 659J BASIN MAX 602C#  
 JRS ELINE ERICA 437B

BW **+2.2** WW **+43** Milk **+24** YW **+79**

□ Herd Tag 3868 Marb **+39** RE **-.20** SB **29.97**

This daughter of the proven sire Shamrock New Design 1793 is from the Eline Erica family backed by moderate birth weight and high-marbling genetics. The dam records 4 IMF 105. Confirmed AI bred to 21AR ROUNDUP 7005 due to calve January 29, 2010.

**157****STEVENSON ZARA C628U**

Cow 161156221 birth date: 2/20/2008 Tattoo: C628U  
 BASIN MAX 602C# G T MAXIMUM#  
**21AR COAL BANK C014** BASIN ELINE ERICA 315U#  
 LEACHMAN LASS 5014# N BAR EMULATION EXT#  
 LEACHMAN LASS 3056  
 BR MIDLAND# TWIN VALLEY PRECISION E161#  
**STEVENSON ZARA D33P** BR ROYAL LASS 7036-19  
 STEVENSON ZARA 4983# Q A S TRAVELER 23-4#  
 J R S ZARA 448T

BW **+1.7** WW **+40** Milk **+11** YW **+78**

□ Herd Tag C628U Marb **+32** RE **-.02** SB **29.99**

A bred heifer backed by generations of calving-ease genetics sired by 21AR Coal Bank C014 from a dam by the \$202,000 BR Midland descending from the Pathfinder Sire QAS Traveler 23-4. This heifer has IMF 138 from a dam with 2 IMF 124. The grandam records 6 WR 112 and 4 YR 106 combined with 26 IMF 106. Confirmed AI bred to 21AR ROUNDUP 7005 due to calve January 24, 2010.

**158****STEVENSON GARDEN GINA 8626**

Cow 16113577 birth date: 2/18/2008 Tattoo: 8626  
 GARDENS WAVE GARDENS HIGHMARK  
**GARDENS TSUNAMI** GREEN GARDEN LADY 6255 S2  
 GREEN GARDEN EILEEN B87 S1 GARDENS HIGHMARK  
 GREEN GARDEN EILEEN 886 S1  
 GARDENS PRIME STAR N BAR PRIME TIME D806#  
**GREEN GARDEN GINA G202-M** GREEN GARDEN JILT C242 S1  
 GREEN GARDEN GINA E202 S1# GARDENS MATRIX  
 GREEN GARDEN GINA 9269 S1

BW **+1.2** WW **+41** Milk **+18** YW **+73**

□ Herd Tag 8626 Marb **+90** RE **+13** SB **49.14**

An outcross female backed by Green Garden breeding with IMF 129 produced as the first calf from a dam by Gardens Prime Star. The grandam records 1 WR 116 and 1 YR 121. Confirmed AI bred to 21AR ROUNDUP 7005 due to calve January 24, 2010.

**159****DIAMOND ELMARETTA 8273**

Cow 16015039 birth date: 2/12/2008 Tattoo: 8273  
 VERMILION PAYWEIGHT J847# VERMILION DATELINE 7078#  
**BASIN PAYWEIGHT 006S** VERMILION LASS 7969  
 BASIN LUCY 3829 C A FUTURE DIRECTION 5321#  
 BASIN LUCY 178E  
 DIAMOND MAX 412H BASIN MAX 602C#  
**DIAMOND ELMARETTA 842M** BEAR CLAW B RAINMAKER 8807#  
 DIAMOND ELMARETTA 625H BASIN EMULATION 178C#  
 DIAMOND ELMARETTA F260

BW **+1.3** WW **+49** Milk **+24** YW **+92**

◇ Herd Tag 8273 Marb **+12** RE **+35** SB **41.91**

This daughter of Basin Payweight 006S has WR 103 and YR 104 combined with IMF 108 and REA 113 for a low-birth weight high-performance combination. Pasture bred to DIAMOND JUSTICE U568 due to calve mid-March 2010.

**160****DIAMOND JANNET 8413**

Cow 16110349 birth date: 2/28/2008 Tattoo: 8413  
 VERMILION PAYWEIGHT J847# VERMILION DATELINE 7078#  
**BASIN PAYWEIGHT 025S** VERMILION LASS 7969  
 BASIN LUCY 3829 C A FUTURE DIRECTION 5321#  
 BASIN LUCY 178E  
 BASIN MAX 602C# G T MAXIMUM#  
**DIAMOND JANNET 236P** BASIN ELINE ERICA 315U#  
 DIAMOND JANNET 6462 BASIN EMULATION 270D#  
 BASIN GREYSTONE JANNET 6779

BW **+1.9** WW **+46** Milk **+24** YW **+101**

◇ Herd Tag 8413 Marb **+29** RE **-.07** SB **44.02**

A bred heifer from the successful blending of Vermilion Payweight J847 and Basin Max 602C ranking in the top 5% for YW. The grandam earned 3 WR 109 and 3 YR 110 while the third dam records 9 WR 107 and 8 YR 104. Pasture bred to DIAMOND AMBUSH 5U29 due to calve the last week of February 2010.

**161****DIAMOND CLOVA PRIDE U260**

Cow 16120965 birth date: 3/4/2008 Tattoo: U260  
 VERMILION PAYWEIGHT J847# VERMILION DATELINE 7078#  
**DIAMOND PAYWEIGHT 738N** VERMILION LASS 7969  
 DIAMOND TROJAN ERICA G272 G T MAXIMUM#  
 BASIN TROJAN ERICA D S 637Y#  
 STEVENSON BRUNO 561G# STEVENSON ROYCE 741C#  
**R&S CLOVA PRIDE 8842#** JRS ENCHANTRESS 16A  
 R&S CLOVA PRIDE 6628 BASIN CONSTITUTION 707C  
 R&S CLOVA PRIDE 4146

BW **+3.2** WW **+46** Milk **+21** YW **+88**

◇ Herd Tag U260 Marb **+24** RE **+25** SB **44.79**

This bred heifer is a granddaughter of Vermilion Payweight J847 and Stevenson Bruno 561G combining WR 102 with REA 107. The dam records 5 WR 103 while the grandam has 8 WR 104. Pasture bred to DIAMOND JUSTICE U568 due to calve mid-March 2010.

**162****DIAMOND ANNIE 1U99**

Cow 16014098 birth date: 1/20/2008 Tattoo: 1U99  
 VERMILION PAYWEIGHT J847# VERMILION DATELINE 7078#  
**BASIN PAYWEIGHT 006S** VERMILION LASS 7969  
 BASIN LUCY 3829 C A FUTURE DIRECTION 5321#  
 BASIN LUCY 178E  
 LEACHMAN RIGHT TIME# N BAR EMULATION EXT#  
**KEYSTONE ANNIE 103#** LEACHMAN ERICA 0025  
 KEYSTONE ANNIE 5-223 BASIN SPADE 702Z  
 KEYSTONE ANNIE 5-2-3-2#

BW **+3.5** WW **+53** Milk **+26** YW **+86**

◇ Herd Tag 1U99 Marb **+16** RE **+14** SB **39.38**

This bred heifer has WR 104 sired by Basin Payweight 006S. The dam is a daughter of Leachman Right Time with 7 WR 108 and 5 YR 102. Pasture bred to DIAMOND IMAGE MAKER 32U9 due to calve mid-March 2010.





**163**

Reference  
Sire



**Diamond Justice U568**

**163 DIAMOND PRIDE 8654**

Cow 16108444 birth date: 1/23/2008 Tattoo: 8654  
 HERO 6267 OF R R 2418# R R HERO 6267#  
**H A IMAGE MAKER 0415#** R R EVERELDA ENTENSE 0413  
 H A RITO BLACKCAP 9038 H 96 RITO 2100 7371  
 H 96 BLACKCAP 3835  
 VERMILION YELLOWSTONE# VERMILION DATELINE 7078#  
**DIAMOND PRIDE 964S** VERMILION B JESTRESS 3912  
 DIAMOND PRIDE 703J BASIN AMBUSH 3905#  
 DIAMOND PRIDE 194G#

BW	<b>-0.7</b>	WW	<b>+59</b>	Milk	<b>+29</b>	YW	<b>+99</b>
----	-------------	----	------------	------	------------	----	------------

◇ Herd Tag 8654 Marb **+22** RE **+13** SB **38.17**

A daughter of the outcross sire HA Image Maker 0415 from a dam by Vermilion Yellowstone recording WR 109 and YR 104 combined with REA 111. Pasture bred to DIAMOND JUSTICE U568 due to calve the last week of February 2010.

**165 DIAMOND BLACKCAP 429U**

Cow 16120766 birth date: 3/9/2008 Tattoo: 429U  
 H A IMAGE MAKER 0415# HERO 6267 OF R R 2418#  
**HA IMAGE MAKER 6550** H A RITO BLACKCAP 9038  
 HA RITO LADY 3515 BR MIDLAND#  
 H A 4167 LADY 1017  
 SUMMITCREST DIAMOND 0K24 GARDENS PRIME TIME#  
**DIAMOND BLACKCAP 112P** SUMMITCREST GAYBIRD 3H77  
 DIAMOND BLACKCAP 1949 DIAMOND RAINMAKER 154E#  
 KEYSTONE BLACKCAP 922

BW	<b>+1.4</b>	WW	<b>+55</b>	Milk	<b>+26</b>	YW	<b>+93</b>
----	-------------	----	------------	------	------------	----	------------

◇ Herd Tag 429U Marb **+35** RE **+11** SB **43.56**

This bred heifer by HA Image Maker 6550 has WR 102 combined with IMF 108 produced as her dam's first calf. The grandam records 6 BR 99 combined with 6 WR 105 and 6 YR 104 along with 6 REA 103. Pasture bred to DIAMOND YELLOWSTONE 281T due to calve mid-March 2010.

**164 DIAMOND BLACKCAP 8688**

Cow 16110331 birth date: 2/26/2008 Tattoo: 8688  
 H A IMAGE MAKER 0415# HERO 6267 OF R R 2418#  
**HA IMAGE MAKER 6550** H A RITO BLACKCAP 9038  
 HA RITO LADY 3515 BR MIDLAND#  
 H A 4167 LADY 1017  
 OFF VRD 5412 VERMILION DATELINE 7078#  
**DIAMOND BLACKCAP 737S** OAK FRONT ANTELOPE A541  
 DIAMOND BLACKCAP G354 G T MAXIMUM#  
 BASIN BLACKCAP C S 678X#

BW	<b>+3.1</b>	WW	<b>+56</b>	Milk	<b>+24</b>	YW	<b>+92</b>
----	-------------	----	------------	------	------------	----	------------

◇ Herd Tag 8688 Marb **+31** RE **+32** SB **47.35**

This outcross heifer by HA Image Maker 6550 has IMF 109 and REA 109 produced as her dam's first calf. The productive third dam recorded 9 WR 109 and 4 YR 111. AI bred to CONNEALY THUNDER due to calve February 13, 2010.

Reference  
Sire



**H A Image Maker 0415**

**166****DIAMOND ANNIE U508**

Cow +16030541 birth date: 1/31/2008 Tattoo: U508  
 B C C BUSHWACKER 41-93# PARAMONT AMBUSH 2172#  
**DIAMOND BUSHWACKER 9095** R C ANITA T BANDO 918903  
 DIAMOND TROJAN ERICA 924L BASIN MAX 602C#  
 VERMILION PAYWEIGHT J847# DIAMOND TROJAN ERICA 777J  
**DIAMOND ANNIE 5009** VERMILION DATELINE 7078#  
 KEYSTONE ANNIE 16# VERMILION LASS 7969  
 WOODHILL TRIPLE THREAT#  
 KEYSTONE ANNIE 5-678

BW **+1.3** WW **+51** Milk **+21** YW **+102**

◇ Herd Tag U508 Marb **+0.8** RE **+29** SB **37.26**

This high-performing bred heifer offers an impressive EPD combination with a low Birth Weight EPD combined with a Yearling Weight EPD in the top 4%. This heifer records BR 99 combined with WR 104 and YR 118 along with RE 116. Bred AI to 21AR ROUNDUP 7005 due to calve January 29, 2010.

**167 DIAMOND BLACKCAP LADY U729**

Cow +16197025 birth date: 3/29/2008 Tattoo: U729  
 C A FUTURE DIRECTION 5321# G A R PRECISION 1680#  
**STEVENSON BENCHMARK N190** C A MISS POWER FIX 308  
 STEVENSON ELGA L706 STEVENSON COMSTOCK 345J  
 STEVENSON ELGA 644G  
 GARDENS EXPEDITION# N BAR EMULATION EXT#  
**DIAMOND BLACKCAP LADY 2333** GREEN GARDEN GINA 2268 S2  
 BASIN BLACKCAP LADY 219H BASIN RAINMAKER 654X#  
 BASIN BLACKCAP LADY B98

BW **-0.1** WW **+34** Milk **+26** YW **+69**

◇ Herd Tag U729 Marb **+89** RE **+14** SB **45.82**

A bred heifer by the high-marbling sire Stevenson Benchmark N190 with BR 93 combined with WR 112 and YR 101 along with IMF 126. The donor dam of this female records 29 IMF 112 and the grandam is also a donor who earned 5 WR 113 and 4 YR 107 combined with 49 IMF 106. The third dam is a former donor with 5 WR 104 and 4 YR 105 combined with 32 IMF 108. Bred AI to 21AR BIG SPREAD 7012A due to calve February 14, 2010.

**168****DIAMOND LUCY U772**

Cow +16136744 birth date: 3/20/2008 Tattoo: U772  
 C A FUTURE DIRECTION 5321# G A R PRECISION 1680#  
**STEVENSON BENCHMARK N190** C A MISS POWER FIX 308  
 STEVENSON ELGA L706 STEVENSON COMSTOCK 345J  
 STEVENSON ELGA 644G  
 BASIN EXTRA 740 218G N BAR EMULATION EXT#  
**DIAMOND LUCY 419L#** BASIN ELMARETTA 1377#  
 BASIN LUCY 178D G T MAXIMUM#  
 BASIN LUCY 855A#

BW **I+2.7** WW **I+48** Milk **I+18** YW **I+86**

◇ Herd Tag U772 Marb **+57** RE **+22** SB **54.69**

A bred heifer by the high-marbling sire Stevenson Benchmark N190 from the Lucy family descending from a grandam who is a maternal sister to the legendary Basin Lucy 178E. The dam of this heifer has 4 WR 109 and 4 YR 108 combined with 66 IMF 102. The grandam records 7 WR 110 and 7 YR 106. Bred AI to 21AR ROUNDUP 7005 due to calve January 28, 2010.

**169****DIAMOND BLACKCAP 606U**

Cow 16231334 birth date: 1/24/2008 Tattoo: 606U  
 BON VIEW NEW DESIGN 1407# B/R NEW DESIGN 036#  
**EXAR 263C** BON VIEW PRIDE 664  
 EXAR JUNE C 3577 BR MIDLAND#  
 PAF 9611 616 1161  
 BASIN RAINMAKER 747L# DIAMOND RAINMAKER 154E#  
**DIAMOND BLACKCAP S590** BASIN JOY 912C  
 DIAMOND BLACKCAP 5012 VERMILION DATELINE 7078#  
 DIAMOND BLACKCAP 188H

BW **+2.3** WW **+48** Milk **+27** YW **+99**

◇ Herd Tag 606U Marb **+48** RE **+15** SB **53.90**

A daughter of the \$263,000 EXAR 263C with WR 105 and YR 110 combined with IMF 106 as her dam's first calf. This heifer is from the productive Blackcap family. Bred AI to 21AR ROUNDUP 7005 due to calve February 1, 2010.

**170 DIAMOND TROJAN ERICA 482U**

Cow 16013339 birth date: 1/19/2008 Tattoo: 482U  
 BON VIEW NEW DESIGN 1407# B/R NEW DESIGN 036#  
**EXAR 263C** BON VIEW PRIDE 664  
 EXAR JUNE C 3577 BR MIDLAND#  
 PAF 9611 616 1161  
 C A FUTURE DIRECTION 5321# G A R PRECISION 1680#  
**DIAMOND TROJAN ERICA 67P** C A MISS POWER FIX 308  
 DIAMOND TROJAN ERICA 924L BASIN MAX 602C#  
 DIAMOND TROJAN ERICA 777J

BW **+0.1** WW **+45** Milk **+25** YW **+90**

◇ Herd Tag 482U Marb **+0.72** RE **+0.39** SB **57.99**

A concentration of carcass genetics ranking in the top 4% for Marbling EPD and in the top 10% for Ribeye Area EPD. This heifer has IMF 123 and RE 120 from a donor dam with 26 IMF 108 and 26 REA 102. Pasture bred to DIAMOND JUSTICE U568 due to calve the last week of March 2010.

Reference  
Sire



**EXAR-263C**





Get the **ORigen Advantage**

# Stevenson Genetics Sale Day Semen Special

**Order your semen on sale day and save!**

**High Altitude Approved!**

21AR Coal Bank C014



Semen  
\$15

**10% sale day discount plus volume discounts**

- Only for orders placed Sale Day
- Call the sale day order numbers below
- Volume Discounts apply to eligible bulls only
- FREE Ground Delivery for +\$1000 orders

GAR Ultimate 6226



Semen  
\$30

Stevenson Bullseye 3R11 — Semen \$17

Summitcrest Stardom 1S54 — Semen \$20

Stevenson Cattleman R142 — Semen \$17

V A R Prime Rate 6254 — Semen \$20

21AR Big Spread 7012A — Semen \$20

Stevenson Paycheck 9415 — Semen \$20

Diamond Payload 982S — Semen \$20

KMK Alliance 187 N24 — Semen \$20

Diamond Justice 901S — Semen \$20

21AR Roundup 7005



Semen  
\$30

10% Volume Discount  
for 50 to 99 units

20% Volume Discount  
for 100 units or more

Hoover Dam



Semen  
\$25

Stevenson Moneymaker R185



Semen  
\$30

# ORigen

BREEDER TO BREEDER GENETIC SERVICES

South East of Billings, Montana • I-90 Exit 469  
10 West Arrow Creek • Huntley, Montana 59037

**Sale Day Ordering -**

**Turk Cell: 406/ 281-0854**

**Stevenson Genetics Office: 406/ 423-5750**

Sales: 1-866-867-4436

info@origenbeef.org • Fax: 406/ 348-2346

**CLICK & SAVE**

# ORigen

[www.ORigenbeef.org](http://www.ORigenbeef.org)

Buy Semen & Certificates  
Direct On-Line!

**eDiscounts**

## STEVENSON GENETICS

PO Box 272  
HOBSON, MT 59452

[www.STEVENSONGENETICS.COM](http://www.STEVENSONGENETICS.COM)

— ORigen Founder —



**STEVENS ON GENETICS**



**STEVENS ON ANGUS**  
406 / 423-7500

**STEVENS ON'S DIAMOND DOT**  
406 / 374-2250

www.STEVENS ONGENETICS.com  
PO Box 272 • HOBSON, MT 59452

Presorted  
FIRST CLASS  
US Postage  
Paid  
Permit No. 6  
Hobson, MT



**RETURN TO THE  
"OLD CAMP"**

*1.5 miles SE of Hobson*



**Please bring this cow sale  
book with you sale day.**

